

User Guide for the Wireless Headset (HS-11W)



9235346
Issue 1

DECLARATION OF CONFORMITY

We, NOKIA CORPORATION declare under our sole responsibility that the product HS-11W is in conformity with the provisions of the following Council Directive: 1999/5/EC. A copy of the Declaration of Conformity can be found at http://www.nokia.com/phones/declaration_of_conformity/.

CE 0682

Copyright © 2004 Nokia. All rights reserved.

Reproduction, transfer, distribution or storage of part or all of the contents in this document in any form without the prior written permission of Nokia is prohibited.

Nokia and Nokia Connecting People are registered trademarks of Nokia Corporation. Other product and company names mentioned herein may be trademarks or tradenames of their respective owners.

Bluetooth is a registered trademark of Bluetooth SIG, Inc.

Nokia operates a policy of continuous development. Nokia reserves the right to make changes and improvements to any of the products described in this document without prior notice.

Under no circumstances shall Nokia be responsible for any loss of data or income or any special, incidental, consequential or indirect damages howsoever caused.

The contents of this document are provided "as is". Except as required by applicable law, no warranties of any kind, either express or implied, including, but not limited to, the implied warranties of merchantability and fitness for a particular purpose, are made in relation to the accuracy, reliability or contents of this document. Nokia reserves the right to revise this document or withdraw it at any time without prior notice.

The availability of particular products may vary by region. Please check with the Nokia dealer nearest to you.

In some countries there may be restrictions in using Bluetooth devices. Check with your local authorities.

9235346 / Issue 1

Contents

1. Introduction	6
Bluetooth wireless technology.....	6
2. Getting started	8
Overview.....	8
Chargers and batteries.....	9
Charging the battery.....	10
When the battery charge falls low.....	10
Switching the headset on or off.....	11
Pairing the headset with a compatible phone.....	11
Disconnecting the headset from the phone.....	12
Connecting the paired headset to your phone.....	12
Troubleshooting.....	13
3. Using the headset	14
Placing the headset on the ear.....	14
Making a call.....	14
Redialling the last dialled number.....	14
Voice dialling.....	14
Answering and ending a call.....	15
Rejecting a call.....	15
Automatic answer.....	15
Adjusting the earphone volume.....	15
Muting an ongoing call.....	15
Switching the call between phone and headset.....	15
Using the headset with several phones.....	16

Resetting the headset	16
4. Battery information	18
Charging and Discharging.....	18
Care and maintenance	19
FCC Notice—Nokia Wireless Headset HS-11W	20

1. Introduction

The Wireless Headset HS-11W can be connected to a compatible phone that supports Bluetooth technology. This allows you freedom to make and receive calls while on the move or in the office.

Read this user guide carefully before using the headset. In addition to this user guide, read also the user guide for your phone, which provides important safety and maintenance information. Keep the headset out of reach of small children.

■ Bluetooth wireless technology

The Bluetooth technology makes it possible to connect compatible communication devices without using cables. A Bluetooth connection does not require that the phone and the headset be in line of sight, but both devices should be within 10 metres of each other. Connections can be subject to interference from obstructions, such as walls, or other electronic devices.

The Wireless Headset HS-11W is specially designed for compatible Nokia phones that support Bluetooth technology. The headset can, however, be used with any compatible Bluetooth devices that support the compatible Handsfree or Headset profiles. (A profile is a set of Bluetooth commands that the phone uses to control the headset).

The Wireless Headset HS-11W is compliant with the Bluetooth Specification 1.1 supporting the following profiles: Headset Profile 1.1, Handsfree Profile 1.0. However, interoperability between the Wireless Headset HS-11W and other

Bluetooth-enabled products is not guaranteed because it depends on compatibility. Check with the manufacturers of other devices to determine their compatibility with this device.

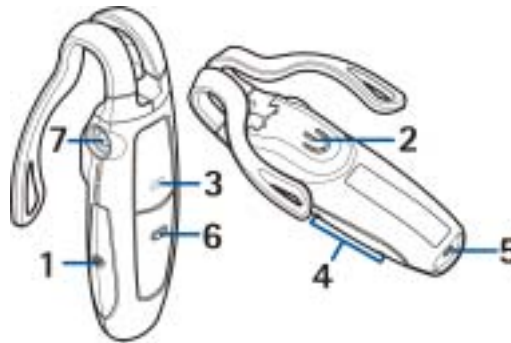
2. Getting started



Note: The use of wireless devices may be restricted in some situations. Observe any restrictions and obey all signs and instructions concerning use of wireless devices.

■ Overview

The headset contains the following parts, as shown in Figure 1.



Power key (1): Switches the headset on and off. You can also mute or unmute the ongoing call by pressing the power key briefly.

Earphone (2): Relays the caller's voice.

Indicator light (3): Displays the current status of the headset.

Volume key (4): Increases or decreases the earphone volume during a call.

Microphone (5): Picks up your voice.

Answer/end key (6): Answers or ends the call. This key can also be used for voice dialling, redialling and switching an active call between the headset and the compatible phone.

Charger connector (7)

Before you can start using the headset, you must:

- Charge the battery
- Pair a compatible phone with the headset

■ Chargers and batteries

Check the model number of any charger before using it with this device. The Wireless Headset HS-11W is intended for use with the following chargers: AC-1, ACP-12, and LCH-12.



Warning: Use only batteries and chargers approved by Nokia for use with this particular enhancement. The use of any other types may invalidate any approval or warranty, and may be dangerous.

For availability of approved enhancements, please check with your dealer. When you disconnect the power cord of any enhancement, grasp and pull the plug, not the cord.

■ Charging the battery

This device has an internal, nonremovable, rechargeable battery. Do not attempt to remove the battery from the device as you may damage the device.

1. Connect the charger cable to the headset as shown in Figure 3.
2. Connect the charger to a wall outlet. The red indicator light is displayed during charging. If the battery is completely discharged, it may take a few minutes before the red indicator is shown. Charging the battery fully may take up to 2 hours depending on the charger.
3. When the battery is fully charged, the green indicator light is displayed. Disconnect the charger from the wall outlet and the headset.



When the battery charge falls low

The fully charged battery has power for up to 6 hours of talk-time or up to 160 hours of standby time. (In the standby mode, the headset is switched on but no call is in progress.)

When the battery is running out of power, the headset beeps and the red indicator light starts to blink. Charge the battery as described above.

■ Switching the headset on or off

To switch on: Press and hold the power key for 2 seconds. The headset beeps and the green indicator light starts blinking fast. The blinking continues slower after the headset is connected to your phone.

To switch off: Press and hold the power key for 2 seconds. The headset beeps and the red indicator light is displayed briefly.

■ Pairing the headset with a compatible phone

1. Make sure that your phone is switched on.
2. Switch on the headset.
3. Enter the Bluetooth menu of your phone and make sure that the Bluetooth feature is activated.
4. Enter the submenu where you can set the phone to search for Bluetooth devices, and start the search.
5. Select the headset from the list.
6. Enter the passcode 0000 to associate ("pair") and connect the headset to your phone.

Once you have entered the passcode, your phone becomes the default phone for the headset, if the headset has not been previously paired with another phone. See also [Using the headset with several phones](#) on page 16.

The headset beeps and appears in the phone menu where you can view the Bluetooth devices that are currently paired with your phone.

7. Start using the headset (see page 14).

Disconnecting the headset from the phone

You can disconnect the headset from your phone when, for example, you want to use another Bluetooth device with your phone.

The headset can be disconnected in the following ways:

- Switch off the headset.
- Disconnect the headset in the Bluetooth menu of your phone.
- Move the headset more than 10 meters away from the phone.

The headset is also disconnected if its battery becomes discharged.

Note that you do not need to delete the pairing with the headset to disconnect it. When you reconnect a paired headset, you are not asked for its passcode.

Connecting the paired headset to your phone

To connect the headset to your phone, switch on the headset, make the connection in the Bluetooth menu of your phone, or press and hold answer/end key.

You can set your phone to accept Bluetooth connection requests from your paired headset. In this case, the headset can connect to your phone automatically when it is switched on. In Nokia phones this can be done by changing your paired devices settings in the Bluetooth menu.

■ Troubleshooting

If you cannot connect the headset to your phone, do as follows:

- Make sure that the headset is switched on and paired with your phone.
- Make sure that the Bluetooth feature is activated on your phone.
- Check that the headset is within 10 metres of your phone and that there are no obstructions between the headset and the phone, such as walls or other electronic devices.
- The pairing information list of the headset may be full. The headset can store the information of up to eight phones at a time. If the list becomes full, reset the headset to the original settings (see page 16).
- If the headset does not automatically reconnect to the default or last used phone, press and hold the answer/end key for 2 second.

3. Using the headset



Note: The use of wireless devices may be restricted in some situations. Observe any restrictions, and obey all signs and instructions concerning use of wireless devices.

■ Placing the headset on the ear

Slide the headset onto your ear as shown in Figure 2.



■ Making a call

When the headset is connected to your phone, make the call by using your phone in the normal way.

■ Redialling the last dialled number

Press the answer/end key twice briefly while no call is in progress.

■ Voice dialling

This functionality is only available if your phone supports voice dialling. When no call is in progress, press and hold the answer/end key for 2 seconds, and proceed as described in the user guide of your phone.

■ Answering and ending a call

Press the **answer/end** key to answer the call or to end the currently active call. You can also answer or end the call by using your phone in the normal way.

■ Rejecting a call

If you do not want to answer a call, briefly press the **answer/end** key twice.

■ Automatic answer

If the Automatic answer function is set on in your phone, the phone automatically answers the incoming call after one ring.

■ Adjusting the earphone volume

Press the **volume up** key to increase or the **volume down** key to decrease the volume. To adjust the volume quickly, press and hold either of these keys for 2 seconds.

■ Muting an ongoing call

You can mute or unmute the ongoing call by pressing the **power** key briefly.

■ Switching the call between phone and headset

You can switch the active call between the headset and a compatible Nokia phone.

To switch the call from the headset to a phone and vice versa, press and hold the answer/end key for 2 seconds or use the respective function in your phone.

■ Using the headset with several phones

The headset can be paired with up to eight phones but connected to only one phone at a time.

The phone that was first paired with the headset is called the "default phone". The phone that was last used with the headset is called the "last used phone".

If the headset is switched on within 10 metres of several paired phones, the headset will try to connect to the "default phone" within a few seconds.

If the headset cannot connect to the "default phone" (for example, when it is switched off or its user rejects the connection), the headset tries to connect to the "last used phone" within a few seconds. If the headset cannot connect to either of the phones, it remains discoverable for other phones.

If you want to use the headset with a paired phone that is not a "default phone" or "last used phone", make the connection in the Bluetooth menu of your phone.

■ Resetting the headset

You can reset the headset to its original settings, for example, to change the default user of the headset. When you reset the headset, all of its settings, including pairing information, are cleared.

To reset the headset, press and hold the **power** key and the **volume up** key for 10 seconds. After the headset has been reset, it beeps twice, and the red and the green indicator lights alternate for several seconds.

4. Battery information

Your device is powered by a rechargeable battery. Take good care of the battery and follow the guidelines below.

■ Charging and Discharging

Your device is powered by a rechargeable battery. The full performance of a new battery is achieved only after two or three complete charge and discharge cycles. The battery can be charged and discharged hundreds of times but it will eventually wear out. Recharge your battery only with Nokia approved chargers designated for this device.

Unplug the charger from the electrical plug and the device when not in use. Do not leave the battery connected to a charger. Overcharging may shorten its lifetime. If left unused, a fully charged battery will lose its charge over time. Temperature extremes can affect the ability of your battery to charge.

Use the battery only for its intended purpose. Never use any charger or battery that is damaged.

Leaving the device in hot or cold places, such as in a closed car in summer or winter conditions, will reduce the capacity and lifetime of the battery. Always try to keep the battery between 15°C and 25°C (59°F and 77°F). A device with a hot or cold battery may not work temporarily, even when the battery is fully charged. Battery performance is particularly limited in temperatures well below freezing.

Do not dispose of batteries in a fire! Dispose of batteries according to local regulations. Please recycle when possible. Do not dispose as household waste.

Care and maintenance

Your device is a product of superior design and craftsmanship and should be treated with care. The suggestions below will help you protect your warranty coverage.

- Keep all accessories and enhancements out of the reach of small children.
- Keep the device dry. Precipitation, humidity and all types of liquids or moisture can contain minerals that will corrode electronic circuits. If your device does get wet, allow the device to dry completely.
- Do not use or store the device in dusty, dirty areas. Its moving parts and electronic components can be damaged.
- Do not store the device in hot areas. High temperatures can shorten the life of electronic devices, damage batteries, and warp or melt certain plastics.
- Do not store the device in cold areas. When the device returns to its normal temperature, moisture can form inside the device and damage electronic circuit boards.
- Do not drop, knock, or shake the device. Rough handling can break internal circuit boards and fine mechanics.
- Do not use harsh chemicals, cleaning solvents, or strong detergents to clean the device.
- Do not paint the device. Paint can clog the moving parts and prevent proper operation.

All of the above suggestions apply equally to your device, battery, charger, or any enhancement. If any device is not working properly, take it to the nearest authorized service facility.

FCC Notice—Nokia Wireless Headset HS-11W

This device complies with Part 15 of the FCC Rules. Operation is subject to the following two conditions: 1. This device may not cause harmful interference; and 2. This device must accept any interference received, including interference that may cause undesired operation. This equipment has been tested and found to comply with the limits for a Class B digital device, pursuant to Part 15 of the FCC Rules. These limits are designed to provide reasonable protection against harmful interference in a residential installation. This equipment generates, uses and can radiate radio frequency energy and, if not installed and used in accordance with the instructions, may cause harmful interference to radio communications. However, there is no guarantee that interference will not occur in a particular installation. If this equipment does cause harmful interference to radio or television reception, which can be determined by turning the equipment off and on, the user is encouraged to try to correct the interference by one or more of the following measures: Reorient or relocate the receiving antenna. Increase the separation between the equipment and receiver. Connect the equipment into an outlet on a circuit different from that to which the receiver is connected. Consult the dealer or an experienced radio/TV technician for help. NOTE: FCC Radiation Exposure Statement: This equipment complies with FCC radiation exposure limits set forth for an uncontrolled environment. This transmitter must not be co-located or operating in conjunction with any other antenna or transmitter. NOTE:

Modifications not expressly approved by Nokia could void the user's authority to operate the equipment.

Free Manuals Download Website

<http://myh66.com>

<http://usermanuals.us>

<http://www.somanuals.com>

<http://www.4manuals.cc>

<http://www.manual-lib.com>

<http://www.404manual.com>

<http://www.luxmanual.com>

<http://aubethermostatmanual.com>

Golf course search by state

<http://golfingnear.com>

Email search by domain

<http://emailbydomain.com>

Auto manuals search

<http://auto.somanuals.com>

TV manuals search

<http://tv.somanuals.com>