

# ***Nikon***

Browser Software for  
Nikon D1 Digital Cameras

## **Nikon View DX** for Macintosh

### **Reference Manual**

## Contents

### Overview

#### Setting up the Camera as a Drive

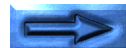
- Mounting the Camera
- Camera Drive Settings
- Unmounting the Camera
- Notes on Using the Camera as a Drive

#### Working with Images

- Viewing the Items in the Camera's Memory
- Copying Images to Disk
- Deleting Images from the Camera
- Opening Images in Another Application

#### Nikon View Browser

- Browsing Images in Your Camera
- Browsing Compact Flash-Memory Cards
- Browsing Images on Disk
- Selecting images
- Viewing Images with the Built-in Viewer
- Deleting Images
- Printing Images
- Changing the Appearance of Thumbnails
- Viewing Image Information
- Copying Images to Disk
- Opening Images in Another Application



# Nikon View Reference

## The Browser Window

### Trademark Information

Apple, the Apple logo, Macintosh, PowerBook and FireWire are registered trademarks of Apple Computer, Inc. Finder, Macintosh PC Exchange, Power Macintosh and PowerBook are trademarks of Apple Computer, Inc.

Adobe is a registered trademarks, and Photoshop a trademark, of Adobe Systems Inc.

CompactFlash is a trademark of SanDisk Corporation.

Internet is a trademark of Digital Equipment Corporation.

Internet Explorer is a product of Microsoft Corporation.

Netscape and Netscape Navigator are registered trademarks of Netscape Communications Corporation.

All other brand or product names mentioned in this manual are the trademarks or registered trademarks of their respective holders.

## Notices

### Concerning the Manuals Provided with This Product

- Reproduction, in whole or in part, of any of the manuals provided with your Nikon product requires prior permission from Nikon.
- The information contained in these manuals is subject to change without notice.
- While Nikon has made every effort to produce perfect manuals, we appreciate any opportunity for improvement. Should you find any mistakes, we would be grateful if you were to kindly let us know. The address of Nikon's representative in your area is provided separately.

### Disclaimer of Liability

- Nikon does not accept liability for damages resulting from the use of this product.



Do not play the installer or reference CD-ROMs provided with this product on an audio CD player or other device not intended for CD-ROMs. Playing the CD-ROM on an audio CD player could damage the speakers or result in hearing loss.

Welcome to *Nikon View DX for Macintosh* (below, *Nikon View*), a browser program for the Nikon D1 digital camera. *Nikon View* allows you to connect your camera to a Macintosh for quick retrieval and browsing of the images stored in your camera. Once *Nikon View* is installed on your Macintosh, the camera can be used like any other drive, allowing free access to images in the camera via standard Mac OS file operations.

*Nikon View Browser* is also provided, making it possible to display the contents of the camera's memory as thumbnail images. Once you have installed *Nikon View* and mastered its simple operations, you'll be able to distribute your digital photographs by disk or electronic mail, or include them in your home page and other documents you create for business or personal use.

*Nikon View's* features include those listed below.

- a driver function that supports connection to your camera and allows you to operate your camera's memory like any other drive
- thumbnails viewed in *Nikon View Browser* can be copied to disk or opened in other applications using drag-and-drop
- images in the camera's memory can be handled using standard Mac OS file operations

- images can be opened in any application that supports JPEG or TIFF for retouching or to be saved in another format, allowing you to use images as desktop pictures or distribute them by electronic mail
- if you have a compact flash-memory reader or a PCMCIA card slot and card adapter, the digital camera's compact flash-memory cards can be browsed even when not inserted in the camera
- files containing raw image data from the CCD in **Nikon Electronic Image Format** (NEF) are displayed as thumbnail images; NEF files can be opened for editing in *Nikon Capture* (sold separately) simply by double-clicking on the thumbnails



This manual will guide you, step-by-step, through the process of using *Nikon View* with your digital camera. For details on *Nikon View* installation and system requirements, refer to the "*Quick Start Guide*."

## **Contents of This Manual**

The contents of each chapter are outlined below.

### **Overview**

Describes *Nikon View's* features and outlines the contents of this manual.

### **Setting Up the Camera Drive**

Explains how to mount and unmount the camera.

### **Working with Images**

Explains how to access images stored in the camera's memory, open them in other applications for editing, and copy them to disk.

### ***Nikon View Browser***

Describes how to display images as thumbnails, view images, and copy them to disk using *Nikon View Browser*.


### **Nikon View Reference**

A handy reference guide to *Nikon View's* windows and menus.

## **To Users of Other Versions of Mac OS**

The illustrations and explanations in this manual are for Mac OS 8.6. Display and operation may differ slightly in other versions of Mac OS. Refer to the System Software manual for the version you are using.

## **On Symbols in This Manual**

The  symbols in this manual signify the need for caution when using the product. These indications are placed in sections that should be read before operation to prevent damage to the product.

## **Working Knowledge**

This manual assumes a basic understanding of common Mac OS operations. If you are in doubt about the meaning of terms used here, refer to your Mac OS manual.

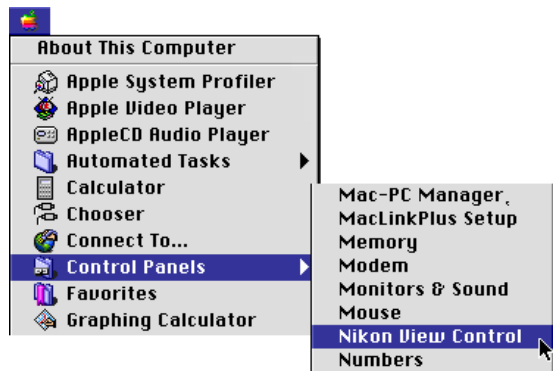
# Setting up the Camera as a Drive

Once you have installed the *Nikon View software*, you can mount the camera the camera as a drive. (See “*Quick Start Guide*” for details on how to install Nikon View.) The mounted camera drive icon is displayed on the desktop, just as with any other drive. This chapter describes how to mount the camera, choose option settings, and unmount the camera. Before proceeding, check that the camera and the computer have been connected using an IEEE 1394 (FireWire) cable (for details on connecting the cable, see the documentation provided with your computer and camera).

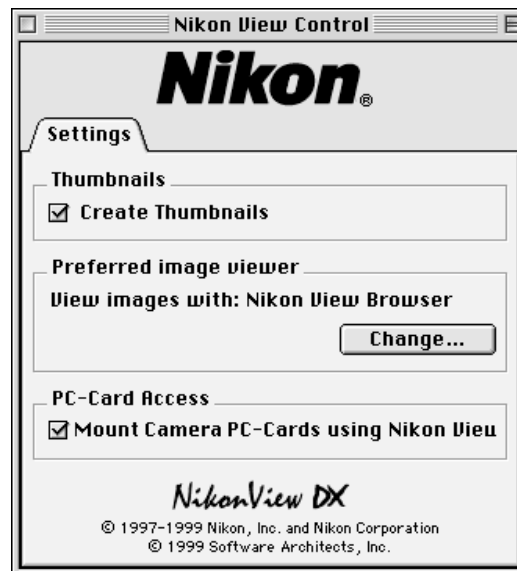
## Mounting the Camera

Follow these steps to mount your camera as a drive.

- 1 Choose **Nikon View Control** from the **Control Panels** submenu of the Apple menu ().



- 2 The Nikon View Control window will then appear.



If you have previously installed *Nikon View* for the Nikon CoolPix series of digital cameras, you will need to click the **Setting** tab to switch panels.

### Note

It is recommended that the camera be powered by the EH-4 AC adapter (available separately) when you are using the Nikon digital camera D1 with *Nikon View DX*. When using an EN-4 battery pack, be aware that leaving the camera connected when the battery is exhausted may shorten battery life. Should the battery become exhausted, insert a fully charged spare battery without delay or disconnect the camera from the computer. The amount of charge remaining is shown by the battery indicator in the control panel on top of the camera (see the *D1 User's Manual* for more information).



## Nikon View Control Settings

You can make changes to the following settings:

- If the **Create Thumbnails** box is checked, thumbnail previews of the images in the camera will be created when the camera is first connected as a drive. When you open the Image Folder in the Nikon D1 camera drive, image files are displayed as thumbnail icons. These thumbnails will be displayed in **Nikon View Browser**, and in the Open dialog box when viewing files on the Nikon D1 camera drive.
- You can select the viewer application that will be used for displaying the images recorded by the camera full size (the default setting is **Nikon View Browser**). Nikon Electronic Image Format (NEF) files containing raw data from the camera's CCD can only be viewed using **Nikon Capture** (sold separately).
- **Nikon View** can be used to mount PC cards.

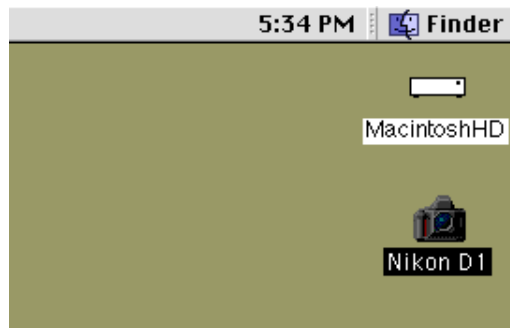
Details on these settings may be found in the following section, "Camera Drive Settings."

After making changes to settings, close the dialog box.

**Note:** *If you are mounting the camera using the settings in effect in the previous session, you do not need to open the Nikon View Control window. If you change settings while the camera is mounted, these changes will be applied next time you mount the camera.*

- 3** If the camera is connected as described in the documentation provided with your computer and camera, it will be mounted automatically if:
- The computer is running
  - The camera is on
  - The camera is not in sleep mode (half-pressing the shutter-release button will end sleep mode)
  - A compact flash-memory card is inserted into the camera
  - The camera is in "PC" mode

When the camera is mounted, the **Nikon D1** icon will appear at the right side of the desktop, together with the icons for other drives such as the start-up disk.



**✓ Caution:** *Do not disconnect the camera while data are being transferred to or from the computer, as this could damage the product.*



## Connection errors

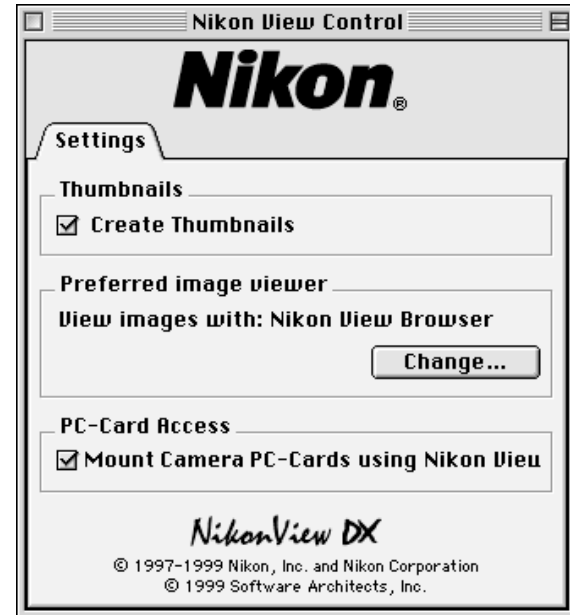
If the computer cannot communicate with the camera, check the following points:

- Have the camera and the computer been connected as described in the documentation provided with the camera and the computer?
- Is the computer running?
- Is the camera on?
- Is the camera in sleep mode? (Half-pressing the shutter-release button will end sleep mode.)
- Has a compact flash-memory card been inserted into the camera?
- Is the camera set to "PC" mode?
- Is the battery inserted correctly, and does it have enough charge?
- If you are using an AC adapter, is the adapter connected correctly?
- Is the camera the only peripheral connected to the IEEE 1394 port?

Refer to the ReadMe file for the latest information on connection errors. The ReadMe file contains updates that are not included in the manual.

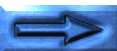
## Camera Drive Settings

Camera drive settings can be chosen from the Settings panel of the Nikon View Control window when the camera is mounted as a drive.



If you have previously installed Nikon View for the Nikon CoolPix series of digital cameras, you will need to click the **Setting** tab to switch panels.

The operations that can be performed from the Settings panel are detailed on the following page.

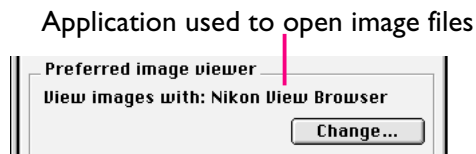


## Creating thumbnail images

If the **Create Thumbnails** box is checked, thumbnail previews of the images in the camera will be created when the camera is first connected as a drive. When you open the Image Folder in the Nikon D1 camera drive, image files will be displayed as thumbnail icons. These thumbnails will also be displayed in *Nikon View Browser*, and in the Open dialog box when viewing files on the Nikon D1 camera drive.

## Choosing the application used to open camera files

You can choose the application used to open the image files stored in the camera's memory. The default is *Nikon View Browser* (built-in viewer).



To use a different application, click the **Change...** button. In the dialog that appears, navigate to a folder containing an application that supports the file formats used by the camera. Select the application and click **Open**.

## Mounting compact flash-memory cards

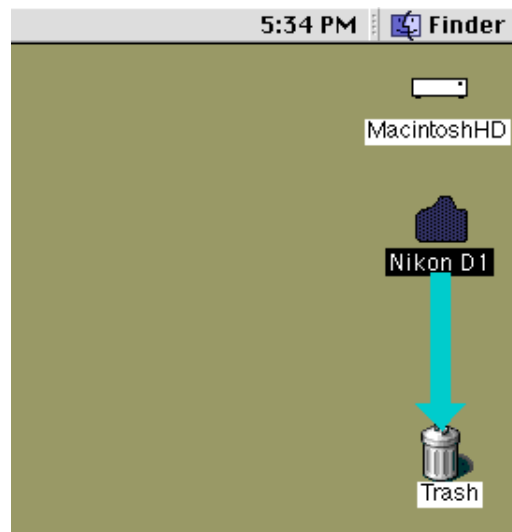
When the **Mount Camera PC-Cards using Nikon View** check box is selected, compact flash-memory cards inserted in a computer card drive or card-reader will be mounted as the Nikon D1 or Nikon CoolPix camera drive (only cards from Nikon digital cameras can be used). Mounted cards can be used in the same fashion as when the camera is mounted as a drive.

## Unmounting the Camera

When you turn off your Macintosh, the camera will be unmounted automatically. To unmount the camera without turning off the computer, use one of the methods given below.

### Drag the Nikon D1 icon into the Trash

The camera can be unmounted by dragging the **Nikon D1** icon into the Trash.



Camera drive folders will close and the **Nikon D1** icon will disappear from the desktop.

**Short-cut:** Click the **Nikon D1** icon, then select **Put Away** from the **File** menu.





## Other ways to unmount the camera

The camera will be unmounted automatically if you do any of the following:

- Turn the camera off
- Let the camera go into sleep mode
- Remove the compact flash-memory card from the camera
- Set the camera to a mode other than “PC” mode

When the camera is unmounted, the folders containing images recorded by the camera will close and the **Nikon DI** icon will disappear from the desktop.

## Remounting the camera

The camera will be remounted if you do any of the following:

- Turn the camera off and then on
- Wake the camera up by pressing the shutter-release button half way
- Remove and reinsert the memory card
- Return the camera to “PC” mode after switching to some other mode.

## Notes on Using the Camera as a Drive

**Nikon View** allows the camera’s memory to be used in much the same way that you would use any other drive. Note however that the following limitations apply:

### Only one camera is supported at a time:

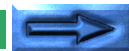
Even if two or more cameras are connected, only one camera can be mounted at any one time. The first camera to be recognized by the computer will be the one that is mounted.

### The camera cannot be shared over a network:

The camera will not function as a network drive. Consequently the **Nikon DI** icon will not be visible to other computers.

### The camera’s memory is read-only:

The camera’s memory is read only, so that files cannot be copied to the camera’s memory, nor can files be saved after being changed or edited in another application. Should you wish to change a file name, do so after copying the image to the hard disk. Once a file has been changed in any way, it cannot be copied back to the image folder in the camera drive. (Although **New Folder** and **Duplicate** in the **File** menu are enabled for the camera volume, you can not create new folders or duplicate files in the camera’s memory.)



If you have installed Nikon View for the Nikon CoolPix series of digital camera, **Nikon CoolPix Mounter** will appear in the Apple menu (🍏) and the Nikon CoolPix CSM item menu will appear in the Control Strip, but these items can only be used with the CoolPix series of digital camera. For details on using cameras in the CoolPix series, see the **Nikon View** documentation for your CoolPix digital camera.

# Working with Images

Once the camera has been connected as a drive as described in the preceding sections, you can use the camera's memory with **Nikon View** in much the same way that you would use any other drive under Mac OS. This chapter describes how to copy images taken with the Nikon D1 digital camera to disk, and how to open them for editing in other applications. These operations are much the same as standard Finder operations; consult your Mac OS manual for details.

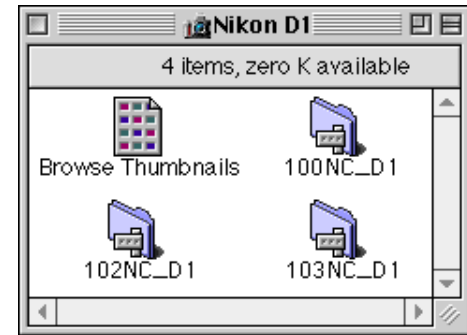
## Viewing the Items in the Camera's Memory

Follow these steps to view images stored in your digital camera's memory.

- 1 Double-click the **Nikon D1** icon at the right side of the desktop.



The Nikon D1 camera drive window opens, and the folders stored in the camera's memory are displayed.



- 2 Double-click the icon for the folder that you want to browse.

### Folder Names

When displayed in *Nikon View*, folders created with the camera are prefixed by a three-digit folder number. Thus the default folder is displayed as "100NC\_D1." Each folder can hold up to 999 images. If this number is exceeded, the camera will create a new folder with the same name but a different prefix (e.g., "101NC\_D1"). When viewed on a computer, folders with the same name but a different prefix appear as separate folders. When viewed from the camera menus, however, folders with the same name appear to be the same folder, although the full folder name with prefix appears in the photo information display in playback mode.



The images in the selected folder will appear as thumbnail file icons.



Images can be copied to disk or opened for editing in another application using standard Finder operations, as described below.

#### Tip

When the camera functions as a drive, it is treated as a read-only disk. Files cannot be copied or saved to the camera. Similarly, the Finder commands **New Folder**, **Duplicate**, and **Make Alias** cannot be used on the camera or the images it contains. Even if you select **as List** or **as Buttons** from the Finder menu to view folders, images will be displayed as icons the next time you mount the camera.

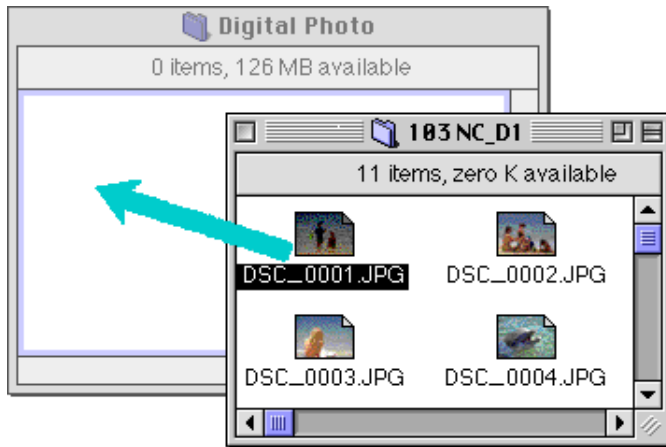
**Caution:** Do not attempt to replace an image file on the camera's memory card with another image file with the same name. Even if you click **OK** in the dialog that appears when a file with the same name is copied to the camera drive, the file will not be overwritten but will instead be erased from the camera's memory.

#### Tip

The ReadMe file in the Nikon D1 window contains important information for using *Nikon View*. This ReadMe file can be deleted by dragging the file to the Trash. Once deleted, the file is permanently erased from the Nikon D1 window. If, after deleting the ReadMe file, you would like to review the information provided, drag the **Nikon View Preferences** (found in the path "System Folder|Preferences|Nikon View Preferences") into the Trash and restart your computer.

## Copying Images to Disk

Before copying images to disk, locate or create the destination folder. To copy images to disk, select the images you wish to copy by clicking their icons (you can select multiple images by holding down the **shift** key while clicking each image in turn), then drag any of the selected icons over the destination folder and release the mouse button.



**Note:** Because the camera functions as a read-only drive, images can only be copied, not moved, even if the option key is not held down. If you would like to place an image on the desktop, hold down the option key while dragging the image to the desktop.

### Tip

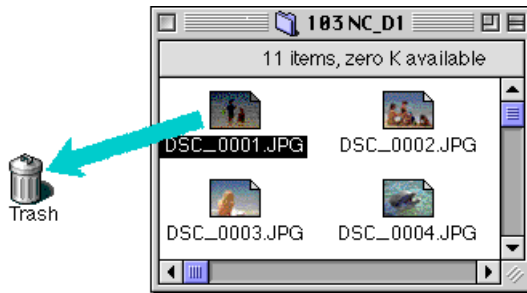
All images taken with the camera are assigned file names of the form “DSC\_nnnn.xyz,” where “nnnn” is a four-digit file number and “xyz” is a three-letter extension (JPG, TIF, or NEF). Similarly, all image files saved in folders in the camera’s memory are assigned file names of the same type. To prevent images already copied to disk from being overwritten, change the filename after copying an image, or create a new folder for each folder on the camera.

## Deleting Images from the Camera

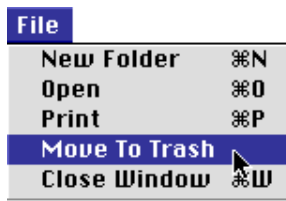
To delete an image from the camera's memory, move the thumbnail icon for the image to be deleted from the browser window to the Trash.

**Note:** Image files are permanently deleted in this way regardless of the camera's "Protect" setting, so be sure to check the image being deleted before carrying out this step

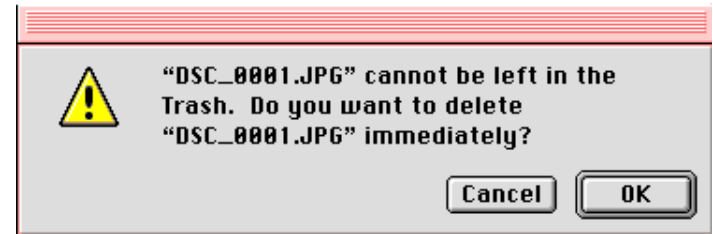
Images can be deleted by dragging their associated thumbnails over the Trash icon and releasing the mouse button.



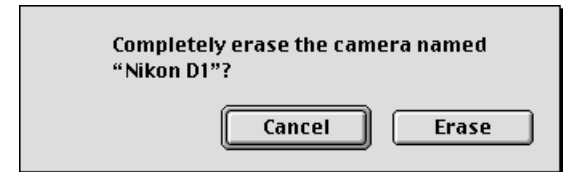
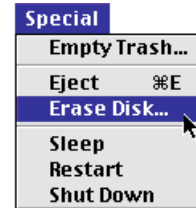
Images can also be deleted by selecting their thumbnails in the browser window and choosing **Move to Trash** from the **File** menu.



When images in the camera are dropped into the Trash, an alert dialog will appear. If you click **OK**, the image will be permanently deleted without being stored temporarily in the Trash.



All images stored in the camera can be deleted simultaneously by initializing the camera drive. To do this, select the **Nikon D1** icon on the desktop, and then choose **Erase Disk** from the **Special** menu. If you click the **Erase** button in the confirmation dialog box which appears, the camera's memory will be initialized and all data it contains will be permanently erased.



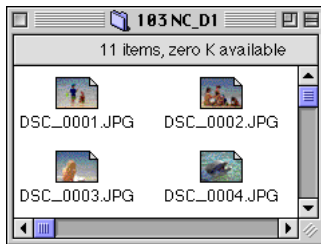
## Opening Images in Another Application

The images can be opened in the associated application either by double-clicking the image icon or by selecting **Open** from the Finder's **File** menu. Images can also be opened directly from any application that supports the file formats used by the camera.

**Note:** *TIFF-YCbCr image files are different from normal TIFF image files. If you would like to work with TIFF-YCbCr image files, check that the application software you are using supports this type of image files. These images can be opened in Adobe Photoshop version 4.0 or later if you have installed a plug-in for TIFF-YCbCr format image files. Nikon Capture (sold separately) is required to work with NEF files containing raw image data from the camera's CCD.*

### Opening selected images from the image folder

Select the images you wish to open by clicking their icons (multiple images can be selected by holding down the **shift** key while clicking each image in turn), then double-click any of the selected thumbnails or choose **Open** from the **File** menu.



The application will start and the selected images will be opened in windows within the application.



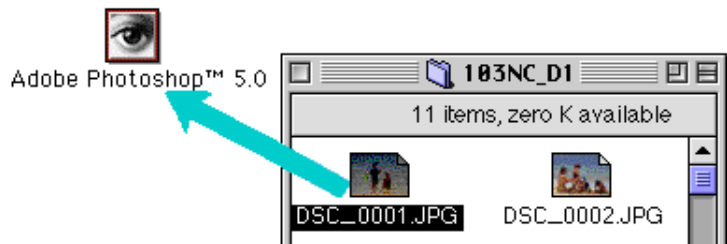
### Tip

The application used to open camera image files is that selected in the Nikon View Control window when the camera was mounted. If *Nikon View Browser* is selected, images will be displayed at full size in the browser's built-in viewer. For details, see "*Nikon View Browser: Viewing Images with the Built-in Viewer.*" If another application is selected, images will be opened in the selected application. If the specified application is not installed when you attempt to open an image, a dialog will appear prompting you to choose the application to be used. Choose a suitable application from the dialog box.



## Opening selected images by drag and drop

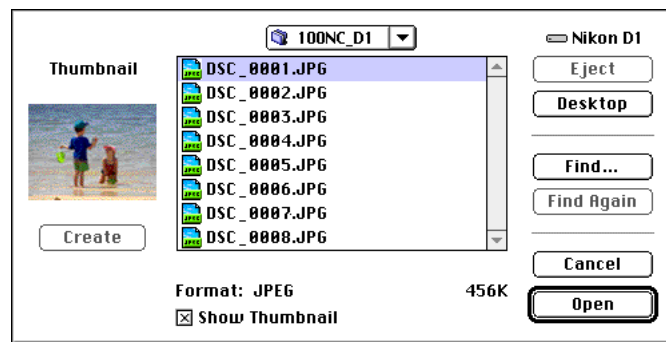
You can open selected images in any application that supports the file formats used by the camera by dragging their thumbnails over the application's icon or alias and releasing the mouse button.



The application will start and the selected images will be opened in windows within the application.

## Opening images from the application's Open dialog

Images in the camera can be opened from any application that supports the file formats used by the camera by choosing **Open...** or **Open File...** from the application's **File** menu. In the Open dialog, navigate to the desktop, select the "Nikon D1" drive, and click the **Open** button. The folders in the camera's memory are displayed; choose the one containing the desired image and click the **Open** button. The images in the selected folder will be listed. If the application's Open dialog supports preview display, a preview of the image currently selected will appear in the dialog box.



Select the image you wish to open and click the **Open** button to open the image in the application.

**Note:** *Previews are only displayed in the Open dialog box if the **Create Thumbnails** item in the Nikon View Control window was checked when the camera was mounted.*

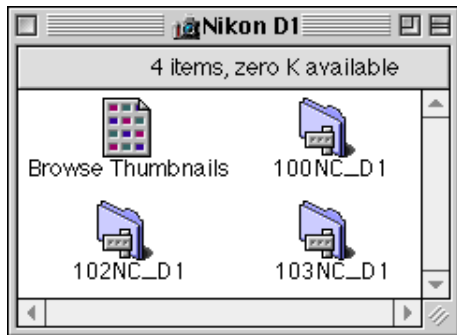


# Nikon View Browser

**Nikon View Browser** is a utility that allows you to browse the images in the camera's memory as thumbnail previews. It also incorporates many Finder functions, making it easy to copy or open images while viewing them in preview. This chapter describes how to browse images using **Nikon View Browser**, how to display images in the browser's built-in viewer, how to copy images to disk, and how to open images for editing in other applications.

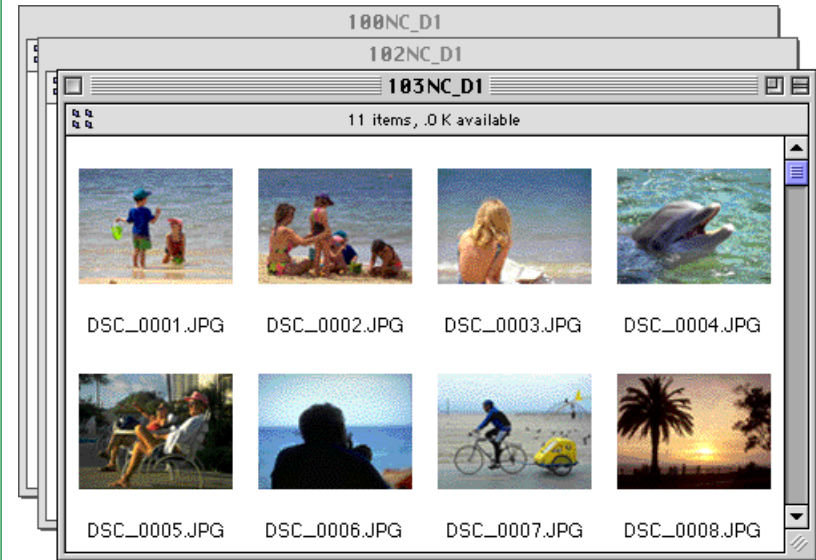
## Browsing Images in Your Camera

To start **Nikon View Browser** and view thumbnail previews of the images in the camera's memory, double-click the **Browse Thumbnails** icon in the Nikon D1 window.



**Note:** The **Browse Thumbnails** icon is only visible if the **Create Thumbnails** item in the Nikon View Control window was checked when the camera was mounted.

The browser windows for all folders in the camera's memory will open and the images will appear as thumbnails.



From the browser window, you can select images to be opened in another application, printed, or copied to disk. You can also use the built-in viewer to view images at full resolution. These operations are detailed in the sections that follow.

### Tip

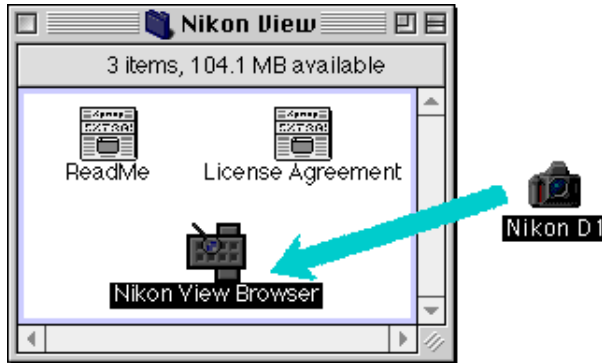
You can also select images using the tab or arrow keys.



## Another way of starting Nikon View Browser

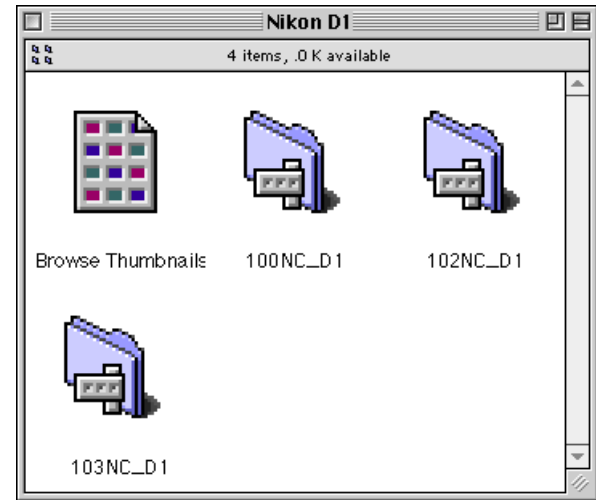
Follow these steps to start *Nikon View Browser* and view thumbnail previews of the images in the camera's memory:

- 1 Drag the **Nikon D1** icon over the **Nikon View Browser** icon and release the mouse button.



**Note:** Nikon View Browser may be found in the path “(Installation Disk)|(Installation Folder)|NikonSoftware|Nikon View|Nikon View Browser.”

*Nikon View Browser* will open to the Nikon D1 window, where the folders in the camera's memory will be displayed.



- 2 Double-click the folder icons that you want to browse. The browser window will show thumbnail previews of the images in the selected folder.

*Nikon View Browser* can also be started by double-clicking the **Nikon View Browser** icon.



A dialog will appear prompting you to select a folder to browse. Highlight the desired folder and click **Select**.

## Browsing Compact Flash-Memory Cards

If your computer is equipped with a Type II PCMCIA card drive, you can read camera memory cards using a compact flash-memory adapter (available separately from Nikon). Memory cards can also be read using a compact flash card-reader. If a card containing images recorded by a Nikon D1 or CoolPix digital camera is inserted in either device, its contents can be browsed from the browser window.

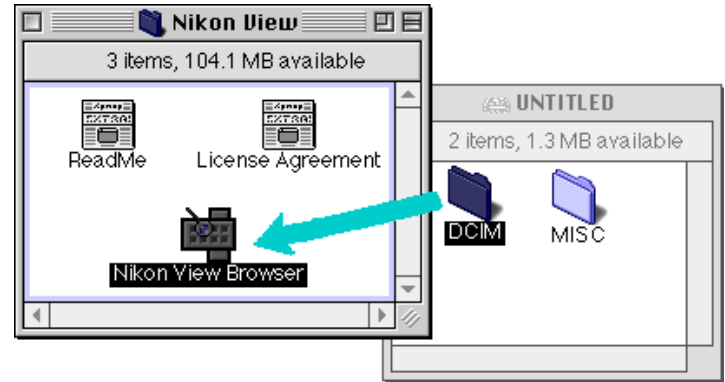
After inserting the card in a card slot or card reader, follow these steps to browse images on a compact flash-memory card.

- 1 Double-click the card icon on the desktop.



The drive window will open on the desktop.

- 2 Drag the “DCIM” folder icon over the **Nikon View Browser** icon and release the mouse button.



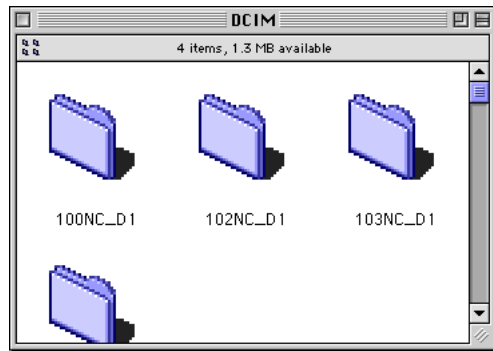
**Note:** Nikon View Browser may be found in the path “(Installation Disk)|(Installation Folder)|NikonSoftware|Nikon View|Nikon View Browser.”

### Tip

If a compact flash card reader or card drive is mounted as the Nikon D1 camera drive (card drives can be mounted as the Nikon D1 camera when **Mount camera PC-cards using Nikon View** is selected in the Nikon View Control window when the camera is mounted), you browse the memory card use the same operations as when browsing camera memory. See the preceding section, “Browsing Images in Your Camera.”



The folders on the card are displayed.



- 3 Double-click the icon for the folder that you want to browse. The browser window will open, showing thumbnail previews of the images in the selected folder.



## Another way of starting Nikon View Browser

You can also start *Nikon View Browser* by double-clicking the **Nikon View Browser** icon.

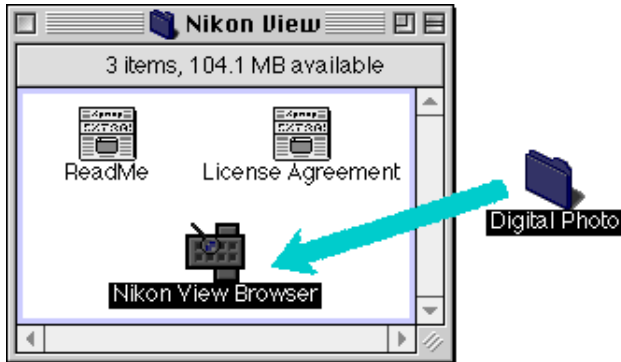


A dialog will appear prompting you to select a folder to browse. Select desired folder and click **Select**.

**Note:** *If you copy the **Browse Thumbnails** icon from the Nikon D1 folder to a folder containing images, you can start Nikon View Browser by double-clicking the copy of the **Browse Thumbnails** icon.*

## Browsing Images on Disk

**Nikon View Browser** can also be used to browse JPEG or TIFF images on disk. Select the folder containing the images you wish to browse, drag it over the **Nikon View Browser** icon and release the mouse button.

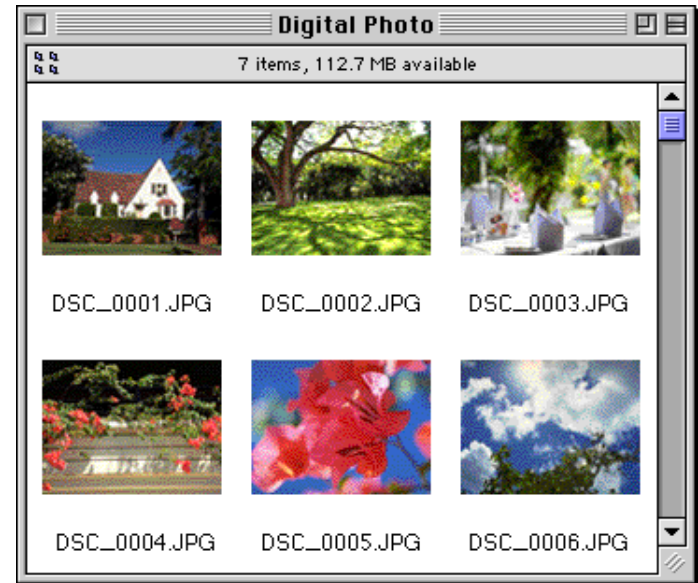


**Note:** Nikon View Browser may be found in the path “(Installation Disk)|(Installation Folder)|NikonSoftware|Nikon View|Nikon View Browser.”

### Tip

You can rename images while browsing the compact flash-memory card or the hard disk.

The browser window will open, showing thumbnail previews of the images in the selected folder.



### Tip

You can also select images using the tab or arrow keys.



## Another way of starting Nikon View Browser

Nikon View Browser can also be started by double-clicking the **Nikon View Browser** icon.



A dialog will appear prompting you to select a folder to browse. Choose the desired folder, and then click **Select**.

**Note:** If you copy the **Browse Thumbnails** icon from the Nikon D1 folder to a folder containing images, you can start Nikon View Browser to view the images in the folder by double-clicking the copy of the **Browse Thumbnails** icon.

## Selecting images

Images in the browser window can be printed or copied to disk. The images on which such operations are to be performed can be selected by clicking the image you wish to use. Selected images are highlighted. You can also select images using the **tab** or arrow (**↓**, **←**, **↑**, **→**) keys.



Selected image

Multiple images can be selected by holding down the **Shift** key on the keyboard while clicking each image in turn. All images in the camera can be selected by choosing **Select All** from the **Edit** menu.

## Viewing Images with the Built-in Viewer

Images previewed in *Nikon View Browser* can be viewed at full resolution using the browser's built-in viewer. The viewer also offers zoom-in, zoom-out, and scroll functions.

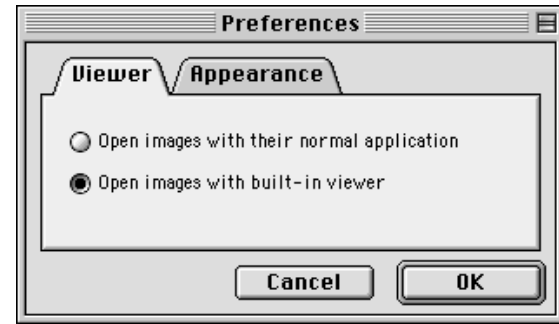
Follow these steps to view images with the browser's built-in viewer.

- 1 To select the built-in viewer as the application used when opening images from the browser, choose **Preferences...** from the browser **Edit** menu.

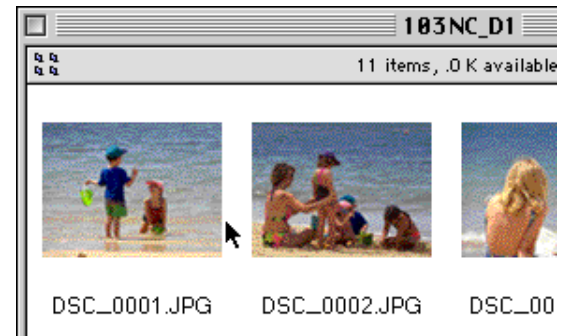


The Preferences dialog will appear.

Click the **Viewer** tab to open Viewer panel. Select **Open images with built-in viewer** and click **OK**.



- 2 In the browser window, select the images you wish to view and double click any of the images or choose **Open** from the **File** menu to start the built-in viewer.



**Note:** Nikon Capture (sold separately) is required to open NEF files containing raw image data from the camera's CCD.



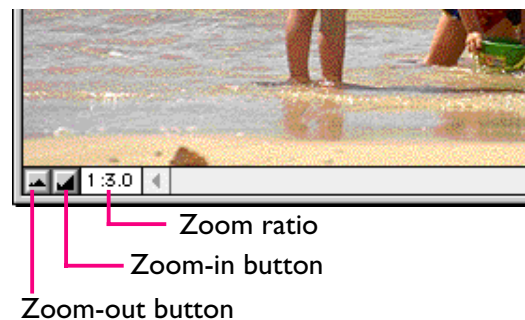
The selected images will be opened at full resolution in separate image windows.



## Zooming the image in and out

When moved over an image window with the command ( $\text{⌘}$ ) key held down, the cursor takes the shape of a magnifying glass ( $\text{⌘} + \text{⌘}$ ). Click anywhere on the image with the command ( $\text{⌘}$ ) key held down to zoom the image in. Pressing the **option** key on the keyboard changes the cursor to a magnifying glass with containing a minus sign ( $\text{⌘} -$ ). Clicking anywhere in the image while holding down the **option** key will zoom the image out.

The image can also be zoomed in and out by clicking the zoom-in and zoom-out buttons at its lower left corner. Clicking the zoom-out button zooms the image out and reduces the size of the window to fit the image. Clicking the zoom-in button zooms the image in and enlarges the window to fit the image.



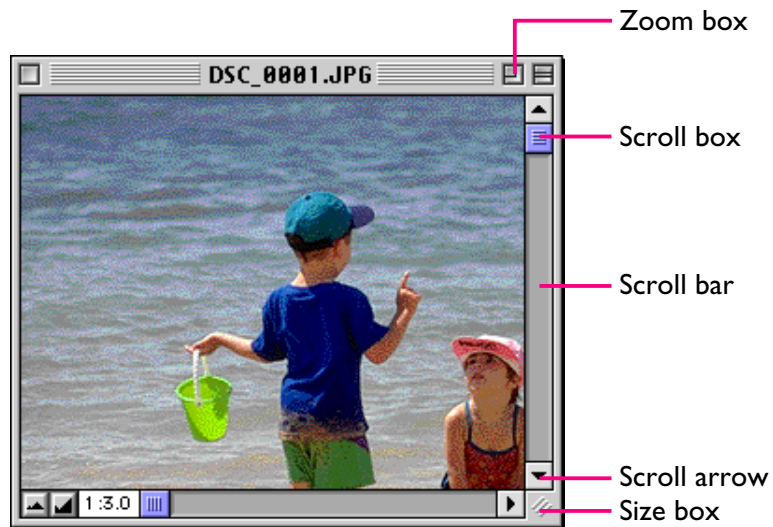
**Note:** Zoom operations have no effect on the thumbnails in the browser window.





## Scrolling and resizing image windows

When the entire image does not fit in the image window, you can view the hidden portion by dragging the scroll boxes at the right and bottom of the window, or by clicking the scroll bars or scroll arrows. If you move the cursor over the image, the cursor will take the shape of a hand (☞), and the image can be scrolled by dragging it.



Alternatively, you can enlarge the window itself dragging the size box at its lower right corner.

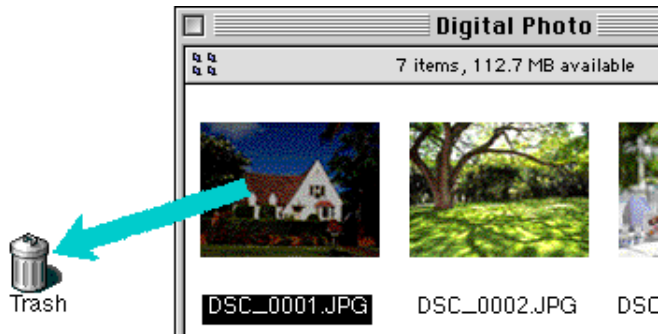
If there is enough space on the desktop, the entire image can be viewed at its current zoom ratio by clicking the zoom box at the top right corner of the image window. The image window will be either enlarged to show the entire image or, if the image is larger than the desktop, enlarged to fill the desktop.

## Deleting Images

When browsing images in the camera, on disk, or on a compact flash-memory card, you can delete images by moving their associated thumbnails to the trash.

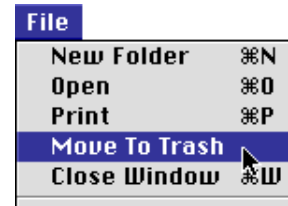
**Note:** *When images in the camera are dropped into the Trash, an alert dialog will appear. If you click **OK**, the image will be permanently deleted without being stored temporarily in the Trash. Image files will be permanently deleted, so be sure to check the image being deleted before carrying out this step.*

Images can be moved to the Trash by dragging their associated thumbnails over the Trash icon and releasing the mouse button.



Images in the camera will not be moved to the Trash, but will instead be permanently deleted.

Images can also be moved to the Trash by selecting their thumbnails in the browser window and choosing **Move to Trash** from the **File** menu.



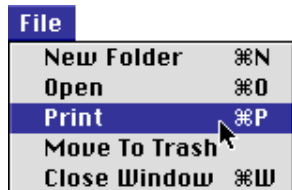
Images in the Trash can be deleted permanently by selecting **Empty Trash** from the **Special** menu. If this is done, the deleted files can no longer be restored.

## Printing Images

Images selected in the browser window can be printed by choosing the **Print** command from the **File** menu. Images displayed in the built-in viewer can also be printed from the image window as described below.

### Printing images from the browser window

To print images, select the associated thumbnails and choose **Print** from the **File** menu.



If you are opening images currently stored in or that have been copied from the camera's memory, the application specified in the Nikon View Control window will start and the Print dialog will be displayed. Make such changes to printer settings as you desire and print the images.

#### Tips

In order to open images in compact flash-memory cards mounted without *Nikon View*, you will need to use Macintosh PC Exchange or a similar control panel to associate the DOS file suffixes (extensions) ".JPG" or ".TIF" with a suitable application. See "Opening Images in Another Application," below.

### Printing from the image window

Images displayed in image windows in the built-in viewer can be printed by selecting **Print Window...** from the **File** menu.

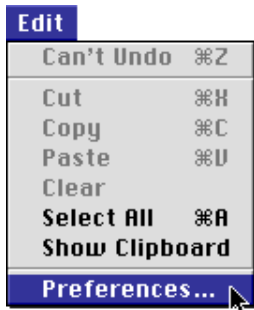


The print dialog box for the printer currently selected in the Chooser will be displayed. Print the image after adjusting printer settings. If multiple image windows are open, only the image in the currently active window will be printed.

# Changing the Appearance of Thumbnails

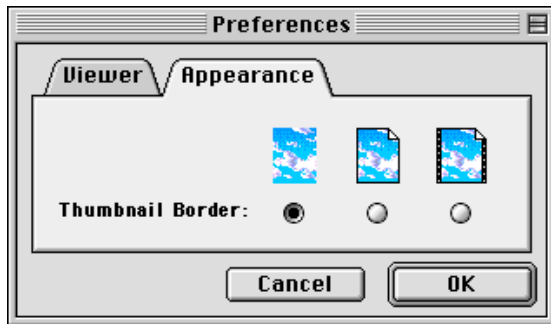
By default, thumbnail previews in the browser window are displayed in the “No border” style frame. You can choose to display images in a document-style frame or with no frame at all.

**1** Select **Preferences...** from the **Edit** menu.



The Preferences dialog will be displayed.

**2** Click the **Appearance** tab to open Appearance panel.



**3** Choose a frame from the list of **Thumbnail Border** radio buttons.



**(No border)**

When this button is selected, thumbnails will be displayed without a frame.



**(Document border)**

When this button is selected, thumbnails will be displayed in a document-style frame, as shown at right.



**(Film-strip border)**

When this button is selected, thumbnails will be displayed in a film-strip frame.



**4** After choosing the desired style, click **OK**.

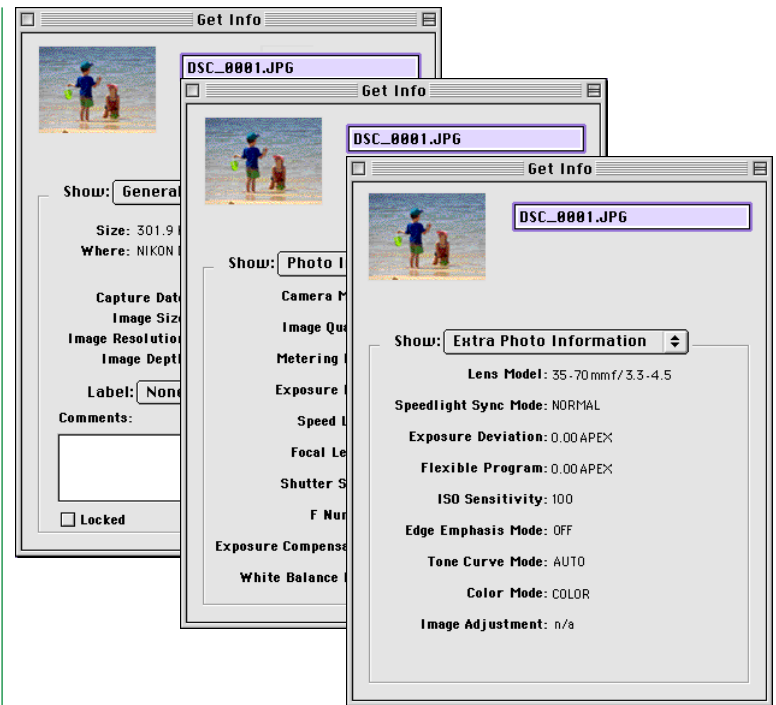
The thumbnails in the browser window will be displayed in the selected frame.

## Viewing Image Information

You can view information on selected images. After selecting the thumbnails, select **Get Info** from the **File** menu.



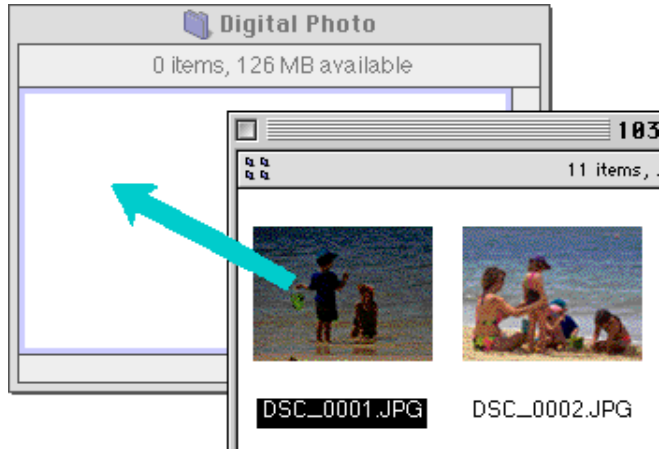
A window with information on the selected image appears. The Get Info window provides general information, photo information and extra photo information. You can switch between the three using the **Show** pop-up menu.



The General Information panel includes information such as file name, file size, capture date, dimensions, and Camera ID (assigned by Nikon Capture) of the selected image. Further, you can change the image's protected setting for camera playback using the **Locked** check box. The Photo Information panel contains information on camera settings such as image quality, exposure and flash settings at the time the photograph was taken. The Extra Photo Information panel contains additional photo information such as exposure compensation, sensitivity and flash synchronization mode settings.

## Copying Images to Disk

Selected images in the browser window can be copied to disk by dragging any of the selected thumbnails over the destination folder and releasing the mouse button.



**Note:** Because the camera functions as a read-only drive, images can only be copied, not moved, even if the option key is not held down.

### Tip

All images taken with the camera are assigned file names of the form "DSC\_nnnn.xyz," where "nnnn" is a four-digit file number and "xyz" is a three-letter extension (JPG, TIF, or NEF). Similarly, all image files saved in folders in the camera's memory are assigned file names of the same type. To prevent images already copied to disk from being overwritten, change the filename after copying an image, or create a new folder for each folder on the camera.

## Opening Images in Another Application

When a thumbnail is double-clicked or a thumbnail is selected and **Open** chosen from the browser **File** menu, the image will be opened in the application specified for the purpose in the Nikon View Control window. Images can also be opened directly from any application that supports the file formats used by the camera. Check that the application being used supports the same format as the image. NEF files containing raw image data from the camera's CCD can be viewed using *Nikon Capture* (sold separately).

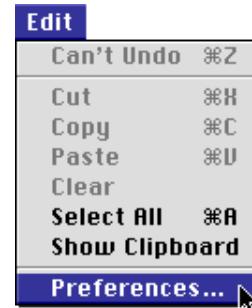
### Tip

When images are read directly from the camera, the creator program is set to the application specified in the Nikon View Control window. If the specified application is installed on your system, double-clicking images in the camera will open them in the application. When read directly from flash-memory cards mounted without *Nikon View*, however, images are treated as DOS files with no creator. In order to open such images with a double click, you will need to use Macintosh PC Exchange or a similar control panel to associate the DOS file suffixes (extensions) ".JPG" and ".TIF" with suitable application. The same restriction applies to images copied directly from flash-memory cards.

## Opening selected images from the browser

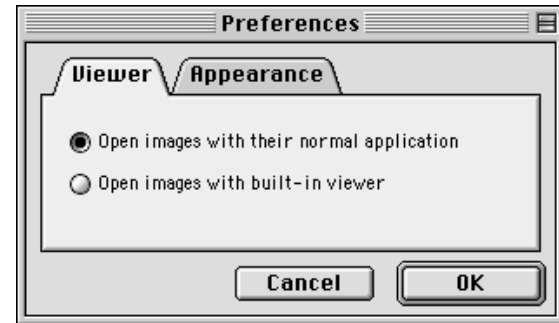
Follow these steps to open images with the specified application.

- 1 To change settings so that images are opened using the designated application, choose **Preferences...** from the browser **Edit** menu.



The Preferences dialog will appear.

Click the **Viewer** tab to open Viewer panel. Select **Open images with their normal application** and click **OK**.



- 2 In the browser window, select the images you wish to open by clicking their thumbnails, then double-click any of the selected thumbnails or choose **Open** from the **File** menu.



The selected images will be opened in windows within the associated application.



**Note:** If you have Adobe Photoshop 4.0 or later with a plug-in for TIFF-YCbCr format image files installed on your computer, you can open TIFF-YCbCr image files in Photoshop. In the case of Adobe Photoshop 4.0, images can be opened from the **File** menu when the plug-in for TIFF-YCbCr is installed. If you have Adobe Photoshop 5.0 or later, you can open TIFF-YCbCr image files automatically in Adobe Photoshop by double-clicking the thumbnails when plug-in for the TIFF-YCbCr format files is installed. Nikon Capture (sold separately) is required to open NEF files containing raw image data from the CCD.

#### Tip

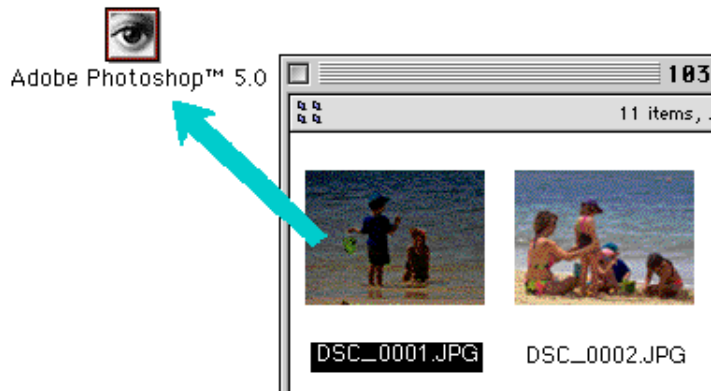
The application used to open camera image files is that selected in the Nikon View Control window when the camera was mounted. If Nikon View Browser is selected, images will be displayed at full size in the browser's built-in viewer. For details, see "Nikon View Browser: Viewing Images with the Built-in Viewer." If another application is selected, images will be opened in the selected application. If the specified application is not installed when you attempt to open an image, a dialog will appear prompting you to choose the application to be used. Choose a suitable application from the dialog box.





## Opening selected images by drag and drop

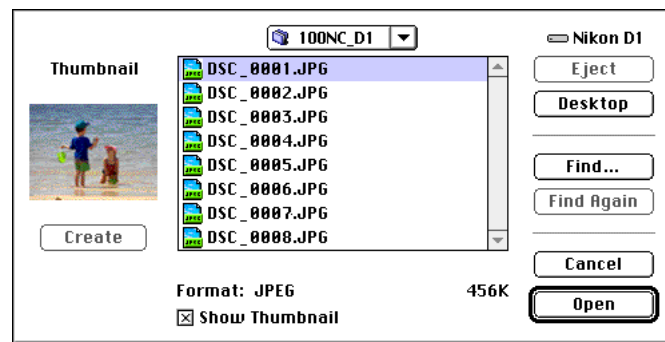
Selected images can be opened in any application that supports the file formats used by the camera by dragging their thumbnails over the application's icon or alias and releasing the mouse button.



The application will start and the selected images will be opened in windows within the application.

## Opening images from the application's Open dialog

Images in the camera can be opened from any application that supports the file formats used by the camera by choosing **Open...** or **Open File...** from the application's **File** menu. In the Open dialog, navigate to the desktop, select the "Nikon D1" drive, and click the **Open** button. The folders in the camera memory are displayed; choose the one you want and click the **Open** button. The images in selected folder will be listed. If the application's Open dialog supports preview display, a preview of the image currently selected will appear in the dialog box.



Select the image you wish to open and click the **Open** button to open the image in the application.

**Note:** *Previews are only displayed in the Open dialog box if the **Create Thumbnails** item in the Nikon View Control window was checked when the camera was mounted.*

# Nikon View Reference

This chapter provides a brief reference guide to *Nikon View*'s windows and menus. Refer to this guide when you want to know the meaning of a command.

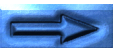
## The Browser Window

This is the Nikon View Browser window. The browser window shows image files in the camera's memory, compact flash-memory cards, or any other drive or folder as thumbnail previews. Images can be opened by double-clicking a thumbnail or copied to disk by drag-and-drop. Window operations are detailed in "Nikon View Browser."



### Tip

Images can also be selected using the tab or arrow keys.



## The Menu



The menus in the menu bar allow you to manage images in the camera's memory or in other folders. The commands available in each menu are outlined below. A more complete description of the tasks that may be performed using the menu commands may be found in the chapter, "Nikon View Browser."

### The Apple Menu

In addition to the usual Apple menu items, the Apple menu contains an **About Nikon View Browser...** option when the browser window is active.



### About Nikon View Browser...

Gives copyright information for *Nikon View Browser*. Click anywhere within the About dialog box to clear it from the screen.

## The File Menu

| File            |    |
|-----------------|----|
| New Folder      | ⌘N |
| Open            | ⌘O |
| Print           | ⌘P |
| Move To Trash   |    |
| Close Window    | ⌘W |
| Get Info        | ⌘I |
| Label           | ▶  |
| Sharing...      |    |
| Duplicate       | ⌘D |
| Make Alias      | ⌘M |
| Put Away        | ⌘Y |
| Find            | ⌘F |
| Show Original   | ⌘R |
| Page Setup...   |    |
| Print Window... |    |
| Quit            | ⌘Q |

### New Folder (⌘N)

Creates a new folder. Note however that as the camera is read-only, this command is not available for images in the Nikon DI window.

### Open (⌘O)

Opens selected images in the built-in viewer or in the creating application, depending on what settings have been chosen in the Preferences dialog box.



## **Print (⌘P)**

Selected images will be opened in the creating application, and the application's Print dialog will be opened allowing you to make changes to printer settings and print the image.

## **Move to Trash**

Moves selected images to the Trash. If this command is used for images in camera memory, an alert dialog will appear.

## **Close Window (⌘W)**

Closes the browser window. Clicking the close box at the left end of the title bar has the same effect. Closing all browser windows ends your current session of *Nikon View Browser*.

## **Get Info (⌘I)**

Displays information on the selected image file.

## **Label**

Changes the label for the selected files.

## **Sharing...**

This command can not be selected from the browser window.

## **Duplicate (⌘D)**

Creates copies of the selected files or folders. Note however that as the camera is read-only, this command is not available for images or folders in camera memory.

## **Make Alias (⌘M)**

Creates an alias for the selected files or folders. Note however that as the camera is read-only, this command is not available for images or folders in camera memory.

## **Put Away (⌘Y)**

Returns files that have been placed on the desktop to the browser window. This command can be used when you have selected items on the desktop in the Finder. Note however that as the camera is read-only, this command is not available for images in camera memory.

## **Find (⌘F)**

Displays Find File dialog box.

## **Show Original (⌘R)**

This command cannot be selected from the browser window.

## **Page Setup...**

Brings up a dialog box which allows you change printer settings such as paper size and orientation.

## **Print Window...**

Prints the browser window.

## **Quit (⌘Q)**

Closes browser windows and ends your current session of *Nikon View Browser*.



## The Edit Menu



### Can't Undo (⌘Z)

### Cut (⌘X) / Copy (⌘C) / Paste (⌘V) / Clear

These commands are not available in the browser window.

### Select All (⌘A)

Selects all the images in the browser window for copying, printing, or deletion.

### Show Clipboard

Displays the contents of the clipboard.

### Preferences...

Opens the Preferences dialog box, where you can choose whether to open images in the built-in viewer or in another application, and where you can set the appearance of the thumbnails in the browser window.

## The View Menu



### as Icons / as Buttons / as List

### as Window / as Pop-up Window / Clean Up

These commands can not be accessed from the browser window.

### Arrange

Orders the thumbnails in the browser by name, date modified, date created, size, kind, or label.

### View Options...

Opens the View Options dialog for the browser window.



## The Special Menu



### Empty Trash...

Deletes all items in the Trash.

### Eject Disk

This command is not available in the browser window.

### Erase Disk...

This command is not available in the browser window.

### Sleep

Puts the system into sleep mode. Normal operation can be restored by pressing any key on the keyboard.

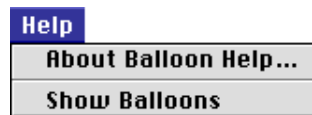
### Restart

Ends the current session of *Nikon View Browser* and any other open applications and restarts the system.

### Shut Down

Ends the current session of *Nikon View Browser* and any other open applications and turns off the computer.

## The Help Menu



### About Balloon Help...

Provides an explanation of the Finder's "Balloon Help" function.

### Show Balloons/Hide Balloons

Turns Balloon Help on or off.

## Free Manuals Download Website

<http://myh66.com>

<http://usermanuals.us>

<http://www.somanuals.com>

<http://www.4manuals.cc>

<http://www.manual-lib.com>

<http://www.404manual.com>

<http://www.luxmanual.com>

<http://aubethermostatmanual.com>

Golf course search by state

<http://golfingnear.com>

Email search by domain

<http://emailbydomain.com>

Auto manuals search

<http://auto.somanuals.com>

TV manuals search

<http://tv.somanuals.com>