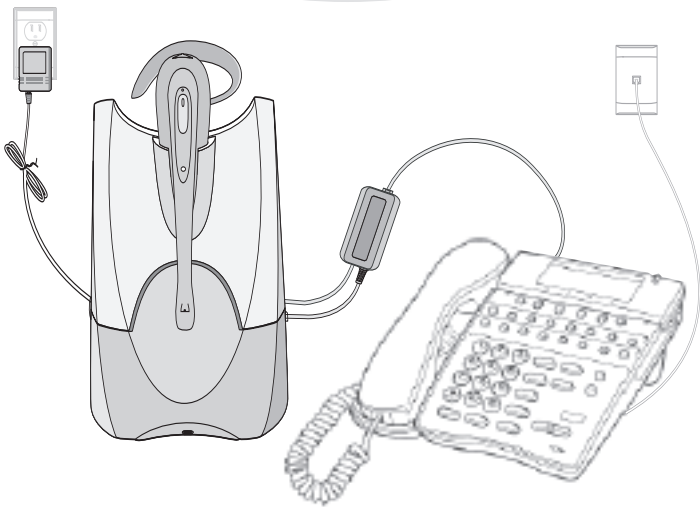


DTERM HEADSET CORDLESS II



QUICK START GUIDE

⚠ When using your telephone equipment these basic safety precautions should be followed to reduce the risk of fire, electric shock, and injury to persons.

1. Read and understand all instructions.
2. Follow all warnings and instructions marked on the product. The symbol ⚠ identifies and alerts the user to the presence of important operating, safety, and service instructions.
3. This product contains gold-plated nickel, phosphor bronze and copper. If you experience a skin irritation, discontinue use and contact Plantronics.
4. Unplug this product from the wall outlet before cleaning. Do not use liquid cleaners or aerosol cleaners. Use a damp cloth for cleaning.
5. Do not locate this product near water, for example, near a bathtub, or sink, in a wet basement, or near a swimming pool.
6. This product should never be placed near or over a radiator or heat register. It should not be placed in a built-in installation unless proper ventilation is provided.
7. Do not allow anything to rest on the power cord. Do not locate this product where persons walking on it will damage the cord.
8. Do not overload outlets and extension cords as this can result in risk of fire or electric shock.
9. Never disassemble or push objects of any kind into the product as this may short out parts which could result in a fire or electric shock. Never spill liquid of any kind on the product.
10. Use caution when installing or modifying telephone lines.
11. This product is intended to be powered by a Listed Class 2 Direct Plug-In Power Unit, rated at an input voltage of 120 VAC, 60Hz and an output voltage of 9 VDC at 800mA.
12. This product requires AC power in order to operate. In order to have phone service during a power outage, have another telephone available that is powered only by the telephone line.
13. Keep all product cords and cables away from operating machinery.
14. Avoid using telephone equipment during an electrical storm.
15. Do not use this equipment to report a gas leak in the vicinity of a gas leak.
16. Never allow children to play with the headset.

Printed in China 63913-02 (01-05)

BATTERY PRECAUTIONS

⚠ To reduce the risk of fire or injury to persons, read and follow these instructions.

1. Always insert batteries correctly with regard to polarity (+ and -) marked on the battery and the equipment. Incorrectly installed batteries can overheat, causing leakage and or explosion.
2. Immediately remove discharged batteries from the equipment to avoid leakage.
3. Remove batteries if the equipment is not used for an extended period of time.
4. Do not heat, crush, deform, or puncture batteries. This can result in leakage and or explosion.
5. Do not disassemble the batteries. This can result in contact with the harmful components.
6. Do not dispose of batteries in a fire. This can result in an explosion.
7. Do not charge batteries. Attempting to charge a non-rechargeable battery can result in leakage, explosion and or fire.
8. Keep batteries out of the reach of children.

SAVE THESE INSTRUCTIONS

Patent U.S. 5,210,791; 6,735,453; D492,667 and D496,029; EM 69109
respective owners.
and Plantronics and the logo design combined are trademarks or registered trademarks of Plantronics, Inc. All other trademarks are the property of the
© 2003-2005 Plantronics, Inc. All rights reserved. Plantronics, the logo design,

FCC REGISTRATION INFORMATION

FCC Requirements—Part 15

This device complies with Part 15 of the FCC Rules. Operation is subject to the following two conditions:

1. This device may not cause harmful interference, and
2. This device must accept any interference received, including interference that may cause undesired operation.

This equipment has been tested and found to comply with the limits for a Class B digital device, pursuant to Part 15 of the FCC Rules. These limits are designed to provide reasonable protection against harmful interference in a residential installation. This equipment generates, uses, and can radiate radio frequency energy and, if not installed and used in accordance with the instructions, may cause harmful interference to radio communications.

However, there is no guarantee that interference will not occur in a particular installation. If this equipment does cause harmful interference to radio or television reception which can be determined by turning the radio or television off and on, the user is encouraged to try to correct interference by one or more of the following measures:

1. Reorient or relocate the receiving antenna.
2. Increase the separation between the equipment and receiver.
3. Connect the equipment into an outlet on another circuit.
4. Consult the dealer or an experienced radio/TV technician for help.

RF Exposure Information

This device and its antenna must not be co-located or operated in conjunction with any other antenna or transmitter.

To comply with FCC RF exposure requirements, only use supplied antenna. Any unauthorized modification to the antenna or device could void the user's authority to operate this device.

FCC Requirements—Part 68

This equipment complies with Part 68 of the FCC Rules and the requirements adopted by ACTA. On the bottom of the base unit of this equipment is a label that contains, a product identifier in the format US:AAAEQ##TXXXX. If requested, this information must be provided to your telephone company. If this equipment causes harm to the telephone network, the telephone company will notify you in advance that temporary discontinuance of service may be required. But if advance notice isn't practical, the telephone company will notify the customer as soon as possible. Also, you will be advised of your right to file a complaint with the FCC if you believe it is necessary.

The telephone company may make changes in its facilities, equipment, operations or procedures that could affect the proper functioning of your equipment. If they do, you will be notified in advance in order for you to make necessary modifications to maintain uninterrupted service.

If trouble is experienced with this unit, for repair or warranty information, please contact customer service at the address and phone listed in the Warranty section of this User's Guide.

INDUSTRY CANADA NOTICE

Notice: This equipment meets the applicable Industry Canada Terminal Equipment Technical Specifications. This is confirmed by the registration number. The abbreviation, IC, before the

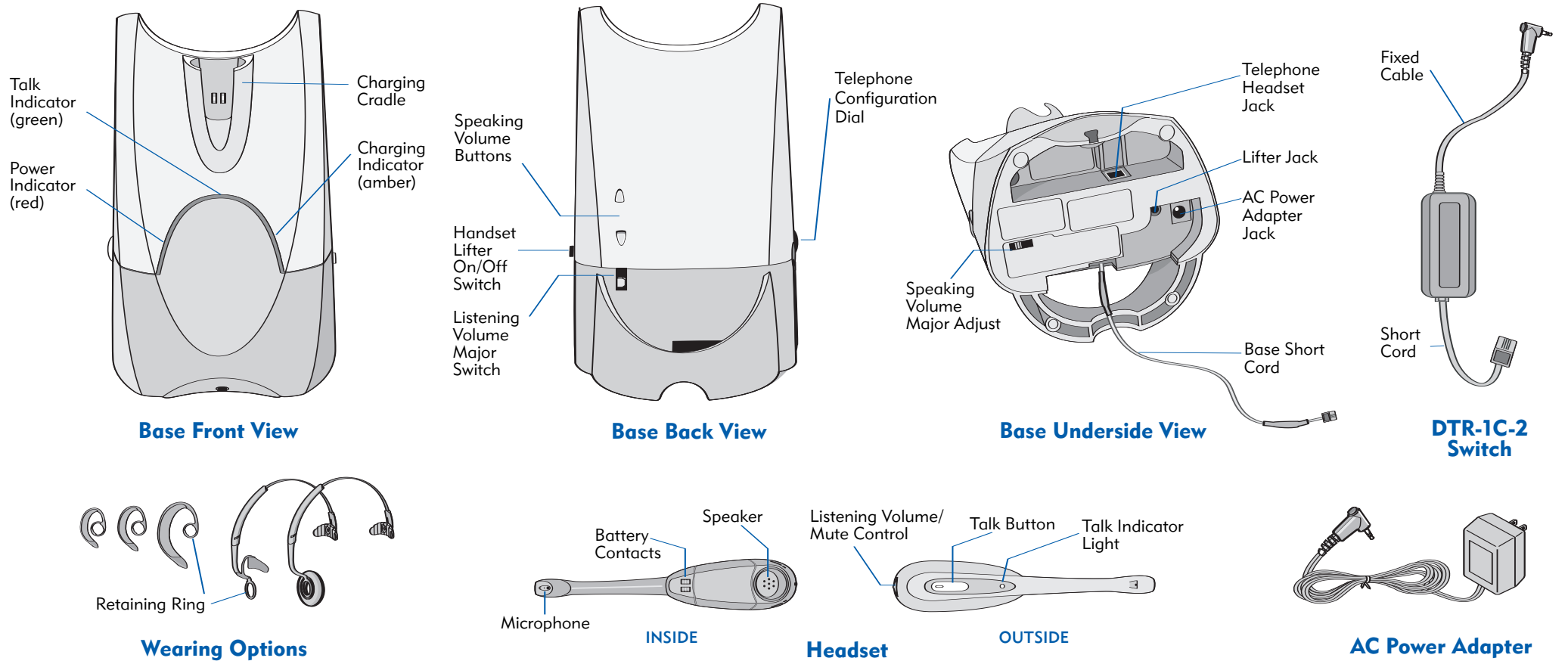
registration number signifies that registration was performed based on a Declaration of Conformity indicating that Industry Canada technical specifications were met. It does not imply that Industry Canada approved the equipment. The Industry Canada registration number is located in the bottom of the unit. Before installing this equipment, users should ensure that it is permissible to be connected to the facilities of the local telecommunications company. The equipment must also be installed using an acceptable method of connection. The customer should be aware that compliance with the above conditions may not prevent degradation of service in some situations. Repairs to certified equipment should be coordinated by a representative designated by the supplier. Any repairs or alterations made by user to this equipment, or equipment malfunctions, may give the telecommunications company cause to request the user disconnect the equipment. Users should ensure for their own protection that the electrical ground connections of the power utility, telephone lines and internal metallic water pipe system, if present, are connected together. This precaution may be particularly important in rural areas.

Caution: Users should not attempt to make such connection themselves, but should contact the appropriate electric inspection authority, or electrician, as appropriate.

RSS 210

This digital apparatus does not exceed the Class B limit for radio noise emissions from digital apparatus set out in the Radio Interference Regulations of Industry Canada. Operation is subject to the following two conditions: 1) this device may not cause interference, and 2) this device must accept any interference, including interference that may cause undesired operation of the device.

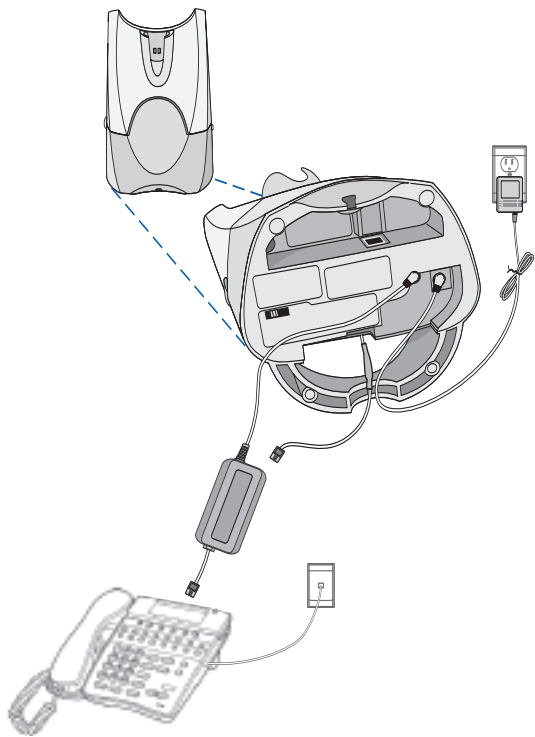
COMPONENTS OF THE DTERM HEADSET CORDLESS II



SETTING UP THE DTERM HEADSET CORDLESS II

CONNECTING THE DTR-1C-2 SWITCH

The DTR-1C-2 is an electronic hook switch compatible with most phones. NEC multiline terminals must be fitted with an AP(R)-R analog adapter (not supplied) before connecting the DTR-1C-2.



Connect the AC Power Adapter to the AC Power Adapter Jack on the underside of the Dterm Headset Cordless II Base. Plug the AC Power Adapter into the power source.

Connect the DTR-1C-2 Fixed Cable to the Lifter Jack on the Base.

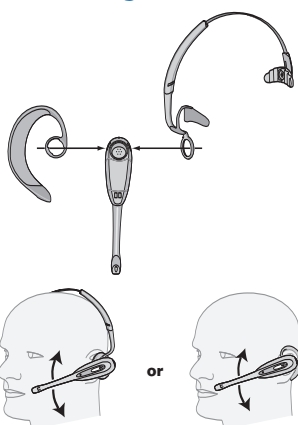
Connect the Base Short Cord to the DTR-1C-2 Switch.

Connect the DTR-1C-2 Short Cord to the telephone. For NEC telephones, connect the Short Cord to the AP(R)-R adapter and then connect the AP(R)-R adapter to the telephone.

ASSEMBLING THE HEADSET

Snap the Speaker end of the Headset into the Retaining Ring of the earloop or the headband.

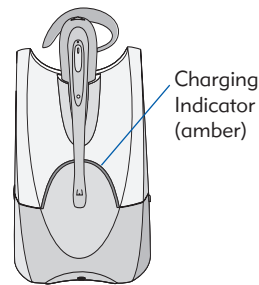
Rotate the Headset in the Retaining Ring until the Microphone end is near your mouth.



CHARGING THE HEADSET

Slide the Headset into the Charging Cradle on the Base. The Amber Charging Indicator will begin blinking. The Indicator remains on once charging is complete:

- 20 minutes = minimum charge
- 3 hours = complete charge

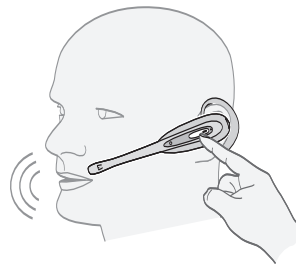
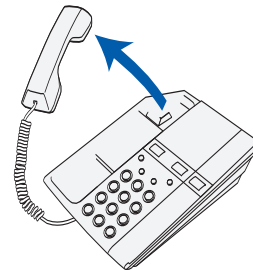


MAKING AND RECEIVING CALLS

To make a call, lift the telephone handset. Press the Talk Button on the Headset. Listen for the dial tone and dial the number on the telephone keypad. The talk Indicator Light blinks green.

To receive a call, lift the handset. Press the Talk Button on the Headset.

To disconnect a call, press the Talk Button on the Headset and return the handset to the telephone.

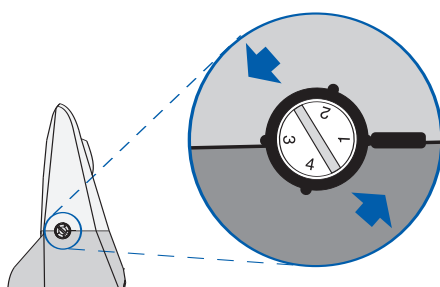


CONFIGURING THE HEADSET TO YOUR TELEPHONE

If any of the following situations occur, the Headset must be configured to be compatible with your telephone.

- You do not hear a dial tone when making a call.
- You can not hear the recipient.
- The recipient does not hear you.
- You hear hissing or buzzing in your Headset.

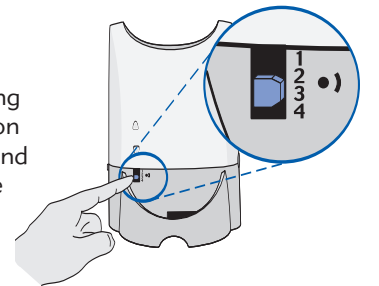
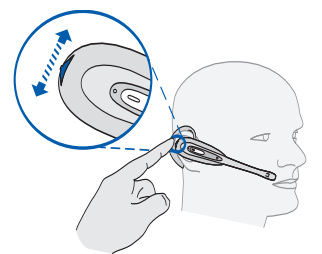
Lift the handset from the telephone and press the Talk Button on your Headset. Locate the Telephone Configuration Dial on the side of the Base and rotate the dial to another of the 4 positions until you hear a dial tone. Align the number on the dial with the seam line on the right side of the dial.



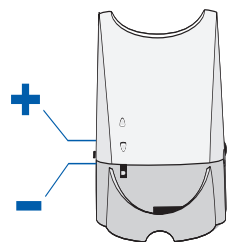
ADJUSTING THE VOLUME

Adjust your listening volume with the Listening Volume/Mute Control located on the Speaker end of the Headset. Rock the Control up or down for volume changes.

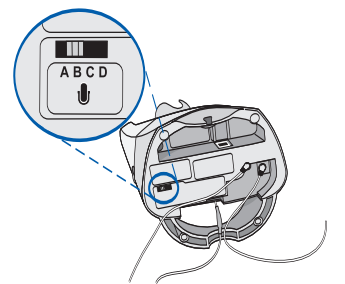
If the listening volume is still too loud or too soft, locate the Listening Volume Major Switch on the back of the Base and move it to another one of the 4 positions.



Adjust your speaking volume with the Speaking Volume Buttons located on the back of the Base.



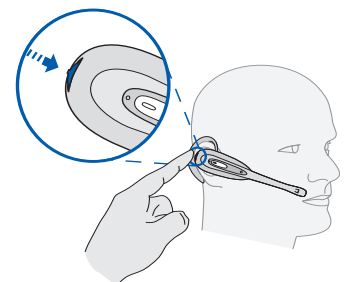
If the speaking volume is still too loud or too soft, locate the Speaking Volume Major Switch on the underside of the Base and move it to another one of the 4 positions.



USING THE MUTE FEATURE

On the Headset, push in the Listening Volume/Mute Control to mute the Headset. Push again to turn off the mute feature.

You will hear a light beep when the mute is in use.



Free Manuals Download Website

<http://myh66.com>

<http://usermanuals.us>

<http://www.somanuals.com>

<http://www.4manuals.cc>

<http://www.manual-lib.com>

<http://www.404manual.com>

<http://www.luxmanual.com>

<http://aubethermostatmanual.com>

Golf course search by state

<http://golfingnear.com>

Email search by domain

<http://emailbydomain.com>

Auto manuals search

<http://auto.somanuals.com>

TV manuals search

<http://tv.somanuals.com>