

MAGNAVOX

SMART. VERY SMART.

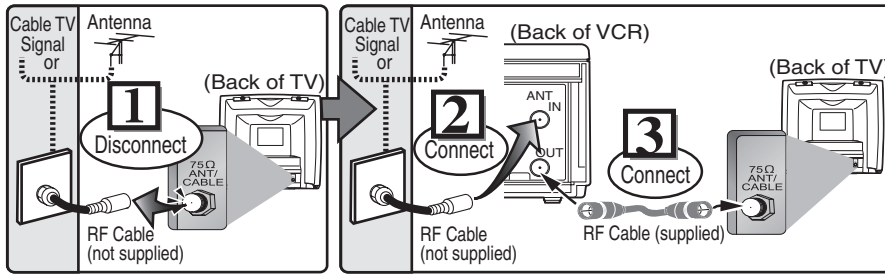
Owner's Manual Video Cassette Recorder CMWV405 VHS

If you need additional operating assistance after reading this owner's manual or to order replacement accessories, please call

TOLL FREE : 1-800-605-8610
<http://www.funai-corp.com>

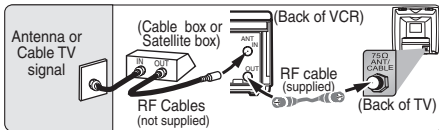
1. Before Using Your VCR

Basic TV Connection



4 Plug the AC power cords of the VCR and TV into the AC outlets.

Hint for Cable Box or Satellite Box



Select this connection when you want to view or record a scrambled channel. With this connection, channels cannot be changed on the unit. You can view or record ONLY the channels you have selected on the cable box or the satellite box.

• **While you are recording, only the recorded channel can be viewed.**

To select channels of the cable box or satellite box

- 1) Turn on the unit by pressing [STANDBY-ON], then press [VCR/TV]. The "POWER" and the "VCR/TV" indicator on the front panel will appear, then press [CHANNEL \wedge/\vee] to select channel 3 or 4 (the same channel as the output channel of the cable box or satellite box).
 - If you use the channel 4, you need to change the unit's RF output to channel 4. Refer to "RF Output Channel".
- 2) At the TV, select channel 3 or 4 (the same channel as you have selected at step 1).
- 3) On the cable box or satellite box, select the channel you want to view or record.

RF Output Channel

If channel 3 is already occupied for broadcasting,

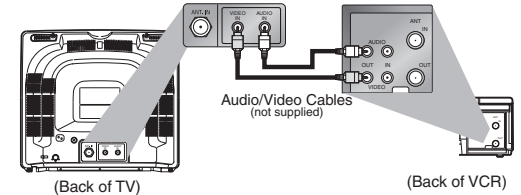
- 1) Set your TV to channel 4.
- 2) Insert a pre-recorded tape into this unit.
- 3) Press [PLAY \blacktriangleright] once.
- 4) After a few seconds, hold [PLAY \blacktriangleright] on the unit for 3 seconds.
 - The RF output channel will change to channel 4 from channel 3 and you will see a playback picture.
 - When a picture does not appear on the TV screen, repeat step 4.
- 5) Press [STOP \blacksquare] to stop playback.

Hint

- The RF output channel does not change when you adjust tracking during playback. In this case, stop the playback, and start the playback again. After that, hold [PLAY \blacktriangleright] on the VCR for 3 seconds again.

Stereo TV Connection

You can use the AUDIO OUT jack and VIDEO OUT jack on the back of the VCR if your TV has Audio/Video Input jacks. In this case, you need to set the TV to external Line Input Mode. Please refer to your TV's owner's manual.



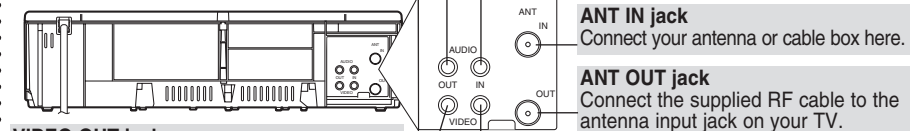
Front & Rear Terminals

AUDIO OUT jack

Connect the audio cable here through to the audio input jack of a camcorder, another VCR, a stereo amplifier or an audio system.

AUDIO IN jack

Connect the audio cable coming from the audio output jack of a camcorder, another VCR or an audio source here.



VIDEO OUT jack

Connect the video cable here through the video input jack of a camcorder, another VCR or a TV.

VIDEO IN jack

Connect the video cable coming from the video output jack of a camcorder, another VCR or an audio-visual source (laser disc player, video disc player, etc.) here.

- To use the input jacks on the back of this unit, press [0], [0], [1] on the remote control.
- To use the input jacks on the front of this unit, press [0], [0], [2] on the remote control.

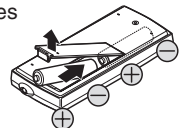
Supplied Accessory

- Remote control (NA374UD) with two AA batteries
- RF cable (WPZ0901TM002)
- Owner's manual (1VMN22462)



Installing the Batteries for the Remote Control

Install two AA batteries (supplied) matching the polarity indicated on the bottom of the remote control.



2. IMPORTANT SAFEGUARDS

WARNING: TO REDUCE THE RISK OF FIRE OR ELECTRIC SHOCK, DO NOT EXPOSE THIS APPLIANCE TO RAIN OR MOISTURE.



CAUTION
RISK OF ELECTRIC SHOCK
DO NOT OPEN



CAUTION:
TO REDUCE THE RISK OF ELECTRIC SHOCK, DO NOT REMOVE COVER (OR BACK). NO USER SERVICEABLE PARTS INSIDE. REFER SERVICING TO QUALIFIED SERVICE PERSONNEL.

The caution marking is located on the rear of the cabinet.



The lightning flash with arrowhead symbol, within an equilateral triangle, is intended to alert the user to the presence of uninsulated "dangerous voltage" within the product's enclosure that may be of sufficient magnitude to constitute a risk of electric shock to persons.



The exclamation point within an equilateral triangle is intended to alert the user to the presence of important operating and maintenance (servicing) instructions in the literature accompanying the appliance.

- 1. Read Instructions-** All the safety and operating instructions should be read before the appliance is operated.
- 2. Retain Instructions-** The safety and operating instructions should be retained for future reference.
- 3. Heed Warnings-** All warnings on the appliance and in the operating instructions should be adhered to.
- 4. Follow Instructions-** All operating and use instructions should be followed.
- 5. Cleaning-** Unplug this video product from the wall outlet before cleaning. Do not use liquid cleaners or aerosol cleaners. Use a damp cloth for cleaning. **EXCEPTION:** A product that is meant for uninterrupted service and, that for some specific reason, such as the possibility of the loss of an authorization code for a CATV converter, is not intended to be unplugged by the user for cleaning or any other purpose, may exclude the reference to unplugging the appliance in the cleaning description otherwise required in item 5.
- 6. Attachments-** Do not use attachments not recommended by the video product manufacturer as they may cause hazards.
- 7. Water and Moisture-** Do not use this video product near water, for example, near a bath tub, wash bowl, kitchen sink, or laundry tub, in a wet basement, or near a swimming pool, and the like.
- 8. Accessories-** Do not place this video product on an unstable cart, stand, tripod, bracket, or table. The video product may fall, causing serious injury to a child or adult, and serious damage to the appliance. Use only with a cart, stand, tripod, bracket, or table recommended by the manufacturer, or sold with the video product. Any mounting of the appliance should

follow the manufacturer's instructions and should use a mounting accessory recommended by the manufacturer. An appliance and cart combination should be moved with care. Quick stops, excessive force, and uneven surfaces may cause the appliance and cart combination to overturn.



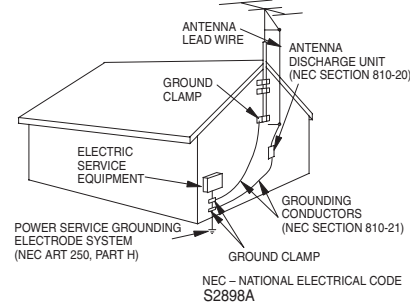
- 9. Ventilation-** Slots and openings in the cabinet are provided for ventilation and to ensure reliable operation of the video product and to protect it from overheating, and these openings must not be blocked or covered. The openings should never be blocked by placing the video product on a bed, sofa, rug, or other similar surface. This video product should not be placed in a built-in installation such as a bookcase or rack unless proper ventilation is provided or the manufacturer's instructions have been adhered to.
- 10. Power Sources-** This video product should be operated only from the type of power source indicated on the marking label. If you are not sure of the type of power supply to your home, consult your appliance dealer or local power company. For products intended to operate from battery power, or other sources, refer to the operating instructions.
- 11. Grounding or Polarization-** This video product is equipped with a polarized alternating-current line plug (a plug having one blade wider than the other). This plug will fit into the power outlet only one way. This is a safety feature. If you are unable to insert the plug fully into the outlet, try reversing the plug. If the plug should still fail to fit, contact your electrician to replace your obsolete outlet. Do not defeat the safety purpose of the polarized plug.

Download from Www.Somanuals.com. All Manuals Search And Download.

- 12. Power Cord Protection-** Power supply cords should be routed so that they are not likely to be walked on or pinched by items placed upon or against them, paying particular attention to cords at plugs, convenience receptacles, and the point where they exit from the appliance.
- 13. Outdoor Antenna Grounding-** If an outside antenna or cable system is connected to the video product, be sure the antenna or cable system is grounded so as to provide some protection against voltage surges and built-up static charges. Article 810 of the National Electrical Code, ANSI/NFPA No. 70, provides information with regard to proper grounding of the mast and supporting structure, grounding of the lead-in wire to an antenna discharge unit, size of grounding conductors, location of antenna-discharge unit, connection to grounding electrodes, and requirements for the grounding electrode. (Fig. A)

FIGURE A

EXAMPLE OF ANTENNA GROUNDING AS PER NATIONAL ELECTRICAL CODE



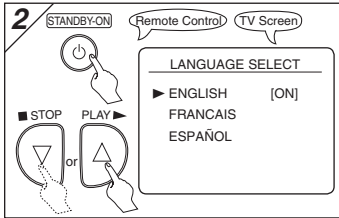
- 14. Lightning-** For added protection for this video product during a lightning storm, or when it is left unattended and unused for long periods of time, unplug it from the wall outlet and disconnect the antenna or cable system. This will prevent damage to the video product due to lightning and power-line surges.
- 15. Power Lines-** An outside antenna system should not be located in the vicinity of overhead power lines or other electric light or power circuits, or where it can fall into such power lines or circuits. When installing an outside antenna system, extreme care should be taken to keep from touching such power lines or circuits as contact with them might be fatal.
- 16. Overloading-** Do not overload wall outlets, extension cords, or integral convenience receptacles as this can result in a risk of fire or electric shock.
- 17. Object and Liquid Entry-** Never push objects of any kind into this video product through any openings as they may touch dangerous voltage points or short-out parts that could result in a fire or electric shock. Never spill liquid of any kind on the video product.
- 18. Servicing-** Do not attempt to service this video product yourself as opening or removing covers may expose you to dangerous voltage or other hazards. Refer all servicing to qualified service personnel.
- 19. Damage Requiring Service-** Unplug this video product from the wall outlet and refer servicing to qualified service personnel under the following conditions:
 - When the power-supply cord or plug is damaged.
 - If liquid has been spilled, or objects have fallen into the video product.
 - If the video product has been exposed to rain or water.
 - If the video product does not operate normally by following the operating instructions. Adjust only those controls that are covered by the operating instructions as an improper adjustment of other controls may result in damage and will often require extensive work by a qualified technician to restore the video product to its normal operation.
 - If the video product has been dropped or damaged in any way.
 - When the video product exhibits a distinct change in performance-this indicates a need for service.
- 20. Replacement Parts-** When replacement parts are required, be sure the service technician has used replacement parts specified by the manufacturer or have the same characteristics as the original part. Unauthorized substitutions may result in fire, electric shock or other hazards.
- 21. Safety Check-** Upon completion of any service or repairs to this video product, ask the service technician to perform safety checks to determine that the video product is in proper operating condition.
- 22. Heat-** This video product should be situated away from heat sources such as radiators, heat registers, stoves, or other products (including amplifiers) that produce heat.

3. Preparation for Use

Turn on the Unit for the First Time

1 Turn on the TV and set it to channel 3.

- If channel 3 is already occupied for broadcasting, see "RF Output Channel" section on page 1.



Do you connect the cable from the cable box or the satellite box to the VCR's ANT-IN jack?

Yes

Yes Press [MENU] to exit.

- Refer to "Hint for Cable Box or Satellite Box" section on page 1.

No

No Please wait for a few minutes.

After scanning...

- The tuner stops on the lowest memorized channel.
- You can select only the channels memorized in the unit by using [CHANNEL ▲/▼].
- If "AUTO SET UP" appears on the TV screen again, check the cable connections. Then, press [F.FWD] once again.

Hint

- Repeat these steps only if either there was a power failure or if this unit has been unplugged for more than 30 seconds.

To Select a Channel

You can select a channel by using the **Number buttons** on the remote control.

Notes for using the Number buttons:

- When selecting cable channels which are higher than 99, enter channel numbers as a three-digit number (for example: 117, press [1], [1], [7]).
- You must precede single-digit channel numbers with a zero (for example: 02, 03, 04 and so on).

To Preset the Channel Again

- 1) Press [MENU] until the main menu appears.
- 2) Select "CHANNEL SET UP" by pressing [PLAY] or [STOP]. Then, press [F.FWD].
- 3) Select "AUTO SET UP" by pressing [PLAY] or [STOP]. Then, press [F.FWD]. After scanning, the tuner stops on the lowest memorized channel.

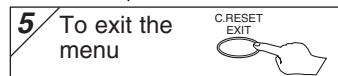
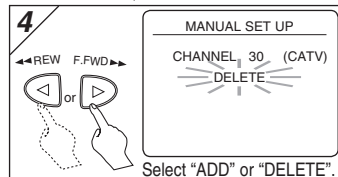
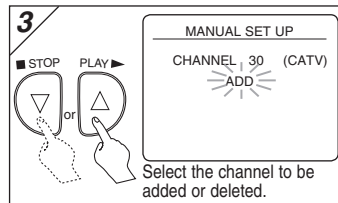
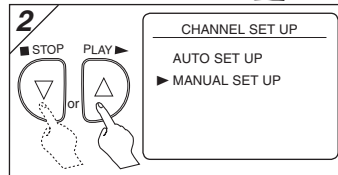
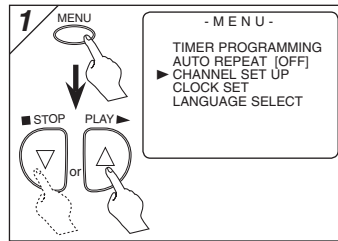
To Change the On-Screen Language

- 1) Press [MENU] until the main menu appears.
- 2) Select "LANGUAGE SELECT" by pressing [PLAY] or [STOP]. Then, press [F.FWD].
- 3) Select "ENGLISH", "FRANCAIS" or "ESPAÑOL" by pressing [PLAY] or [STOP]. Then, press [C.RESET/EXIT].

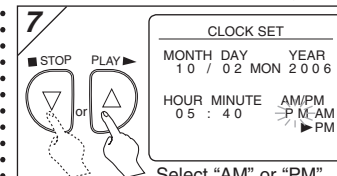
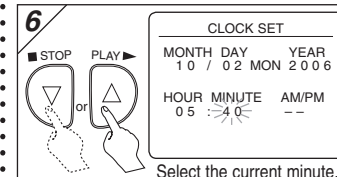
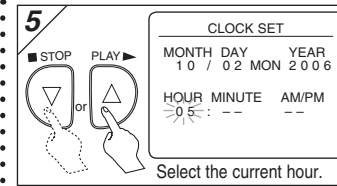
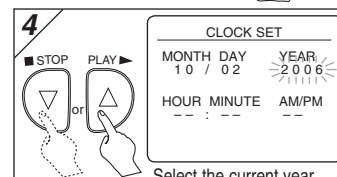
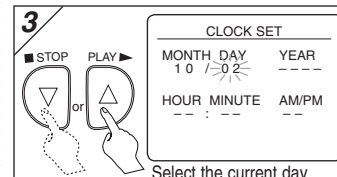
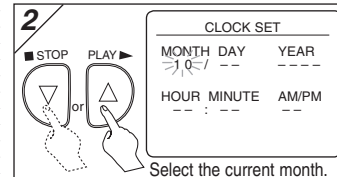
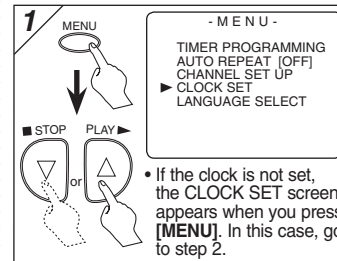
Hint

- If you accidentally select Spanish or French and need English: Press [MENU] and choose SELEC. IDIOMA, or SELECTION LANGUE. Press [F.FWD] and select ENGLISH. Finally, press [C.RESET/EXIT].

To Add/Delete Channels



Clock Set Up



8 To exit the CLOCK SET screen, press [F.FWD].

Hint

- To go back one step, press [REW] (during steps 2 to 7).
- Your clock setting will be lost if either there is a power failure or if this unit has been unplugged for more than 30 seconds.

4. Precautions

Precautions

Install Location

For safety and optimum performance of this unit:

- Install the unit in a horizontal and stable position. Do not place anything directly on top of the unit. Do not place the unit directly on top of the TV.
- Shield it from direct sunlight and keep it away from sources of intense heat. Avoid dusty or humid places. Avoid places with insufficient ventilation for proper heat dissipation. Do not block the ventilation holes on the sides of the unit. Avoid locations subject to strong vibration or strong magnetic fields.

Avoid the Hazards of Electrical Shock and Fire

- Do not handle the power cord with wet hands.
- Do not pull on the power cord when disconnecting it from AC wall outlet. Grasp it by the plug.

Moisture Condensation Warning

Moisture condensation may occur inside the unit when it is moved from a cold place to a warm place, or after heating a cold room or under conditions of high humidity. Do not use the unit at least for 2 hours until its inside is dry.

FCC Warning

This equipment may generate or use radio frequency energy. Changes or modifications to this equipment may cause harmful interference unless the modifications are expressly approved in the instruction manual. The user could lose the authority to operate this equipment if an unauthorized change or modification is made.

Important Copyright Information

Unauthorized recording or use of broadcast television programming, video tape, film or other copyrighted material may violate applicable copyright laws. We assume no responsibility for the unauthorized duplication, use, or other acts which infringe upon the rights of copyright owners.

A Note about Recycling

This product's packaging materials are recyclable and can be reused. Please dispose of any materials in accordance with your local recycling regulations. Batteries should never be thrown away or incinerated but disposed of in accordance with your local regulations concerning chemical wastes.

Note to the Cable TV System Installer

This reminder is provided to call the Cable TV system installer's attention to Article 820-40 of the NEC that provides guidelines for proper grounding and in particular, specifies that the cable ground should be connected to the grounding system of the building, as close to the point of cable entry as possible.

CAUTION:
TO PREVENT ELECTRIC SHOCK,
MATCH WIDE BLADE OF PLUG TO
WIDE SLOT, FULLY INSERT.

Troubleshooting Guide

If this unit does not perform properly when operated as instructed in this Owner's Manual, check this unit consulting the following checklist.

PROBLEM	CORRECTIVE ACTION
No power.	<ul style="list-style-type: none"> • Make sure the power plug is connected to an AC outlet. • Make sure the power is turned on.
Timer recording is impossible.	<ul style="list-style-type: none"> • Make sure the timer recording is set correctly. • Make sure the power is off. • Make sure the VCR clock is set correctly.
Cannot go into Recording mode.	<ul style="list-style-type: none"> • Make sure the tape has a record tab. If needed, cover the hole with adhesive tape.
Playback picture is partially noisy.	<ul style="list-style-type: none"> • Adjust tracking control for a better picture by pressing [CHANNEL ^/∇].
Cannot view a tape but the audio is OK.	<ul style="list-style-type: none"> • Head cleaning may be necessary. Refer to "Auto Head Cleaning" on page 8. • Make sure the VCR is not in the Menu mode.
No or poor playback picture.	<ul style="list-style-type: none"> • Change the RF output channel to CH4. Then select the same channel on the TV. • Fine tune your TV.
TV programs cannot be seen normally.	<ul style="list-style-type: none"> • Re-check the ANT-IN and ANT-OUT connections. See page 1. • Press [VCR/TV] on the remote control so that the VCR/TV indicator on the unit disappears.
No operation from the infrared Remote Control.	<ul style="list-style-type: none"> • Make sure the power plug is connected to an AC outlet. • Check batteries in remote control.
Video or color fades in and out when making a copy of a video tape.	<ul style="list-style-type: none"> • You cannot copy a copyrighted video tape. You are experiencing copy guard protection.

Specifications

Video Heads :	Four Heads	Power requirement :	120V, 60Hz
Operating temperature :	41°F~104°F (5°C~40°C)	Power consumption :	14 Watts
Converter output :	VHF Channel 3 or 4	Dimensions :	W 14-3/16" (360mm) H 3-5/8" (92mm) D 8-9/16" (216mm)
		Weight :	4.0 lbs. (1.8 Kg.) (approx.)

- Designs and specifications are subject to change without notice and legal obligation.
- If there is a discrepancy between languages, the default language will be English.

Make your contribution to the environment!!!

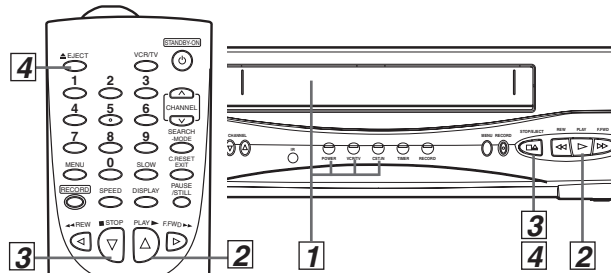
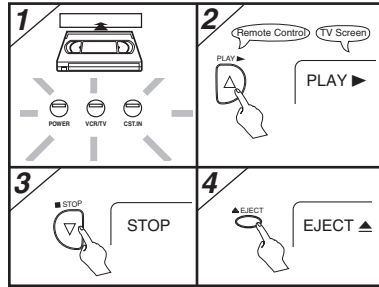
- Used up batteries do not belong in the dust bin.
- You can dispose of them at a collection point for used up batteries or special waste. Contact your council for details.



5. Playback

Before:
Turn on the TV and set it to channel 3.

- If channel 3 is already occupied for broadcasting, see "RF Output Channel" section.



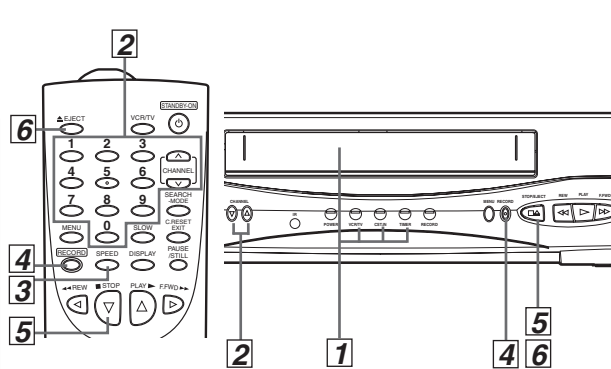
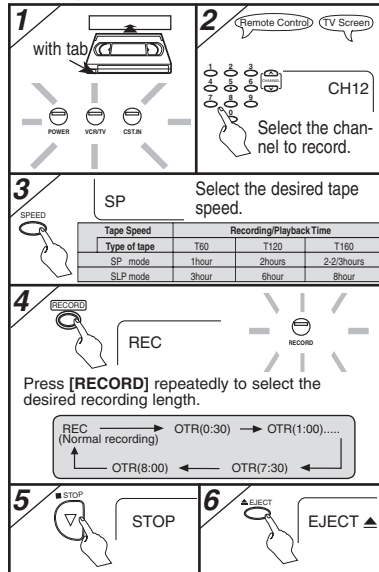
Hint

- When a tape without record tab is inserted, the unit will start playback automatically at step 1.
- Tracking will be automatically adjusted upon playback. To adjust the tracking manually, press [CHANNEL ^/∇].

6. Recording & OTR (One Touch Recording)

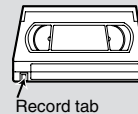
Before:
Turn on the TV and set it to channel 3.

- If channel 3 is already occupied for broadcasting, see "RF Output Channel" section.



Accidental erasure prevention

To prevent accidental recording on a recorded cassette, remove its record tab.
To record on it later, cover the hole with adhesive tape.



Hint

- If you have connected this unit to a cable box or satellite box, refer to "Hint for Cable Box or Satellite Box" section on page 1.

7. Other Operations

To cue or review picture during playback (Picture Search)

Press [F.FWD ►►] or [REW ◀◀].
• Press it again and the VCR will now search in super high speed (in the LP/SLP modes only).

To freeze the picture on TV screen during playback (Still mode)

Press [PAUSE/STILL]. Each time you press the button, the picture will be forwarded by one frame.
• If the picture begins to vibrate vertically during the still mode, stabilize the picture by pressing [CHANNEL ^/∇].
• If the picture is distorted or rolling vertically, adjust the vertical hold control on your TV if equipped.

Counter Reset

Press [C.RESET/EXIT].

Hint

- Still/Slow/Pause mode will be automatically cancelled after 5 minutes to prevent damage to the tape and the video head.
- To return to playback from the Picture Search/Still/Slow mode, press [PLAY ►].

To play back in slow motion

Press [SLOW] during playback or the still mode.
• If the noise bar appears on the TV screen, you can reduce it by pressing [CHANNEL ^/∇].

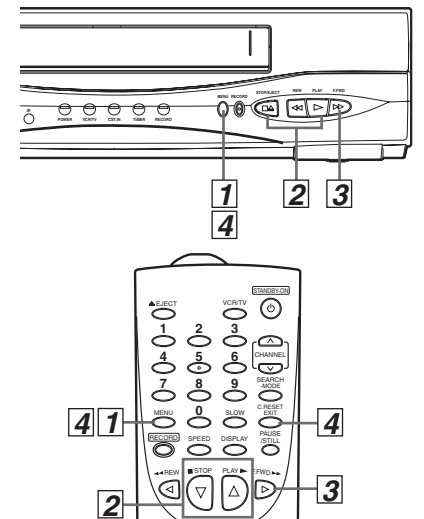
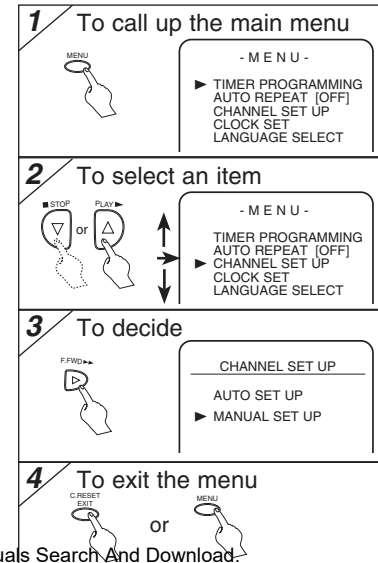
To temporarily stop recording (Pause mode)

Press [PAUSE/STILL].
• During the rec pause mode, five ■ marks appear on the TV screen. Each ■ mark represents one minute.
• Press it again to resume recording.

Auto Rewind

When a tape reaches its end during playback, fast-forward, or recording (except timer recording and One Touch Recording), the tape will automatically rewind to the beginning. After rewinding finishes, the unit will eject the tape and turn itself off.

8. On-Screen Operations



9. Recording Features

Timer Recording

• Insert a tape with its record tab into the unit.

1

MENU

- MENU -

- TIMER PROGRAMMING
- AUTO REPEAT [OFF]
- CHANNEL SET UP
- CLOCK SET
- LANGUAGE SELECT

F.FWD ▶▶▶

2

STOP PLAY

PROGRAM NUMBER 1

DATE --- / --- / ---

START TIME --- : --- : ---

END TIME --- : --- : ---

CHANNEL ---

REC SPEED ---

Select an empty program number.

F.FWD ▶▶▶

3

STOP PLAY

PROGRAM NUMBER 1

▶ ONCE DAILY WEEKLY

Select "ONCE", "DAILY" (Mon-Fri), or "WEEKLY".

F.FWD ▶▶▶

4 Select the desired month.

STOP PLAY

ONE TIME PROGRAM

PROGRAM NUMBER 1

DATE 10/23 MON

START TIME 07:30

END TIME 08:30

CHANNEL 3

REC SPEED SP

Select the desired day.

STOP PLAY

• You can program one year in advance.

F.FWD ▶▶▶

5 Select the desired start time (hour).

STOP PLAY

ONE TIME PROGRAM

PROGRAM NUMBER 1

DATE 10/23 MON

START TIME 07:30

END TIME 08:30

CHANNEL 3

REC SPEED SP

Select the minute.

STOP PLAY

F.FWD ▶▶▶

6

STOP PLAY

ONE TIME PROGRAM

PROGRAM NUMBER 1

DATE 10/23 MON

START TIME 07:30 PM

END TIME 08:30 AM

CHANNEL 3

REC SPEED SP

Select "AM" or "PM".

F.FWD ▶▶▶

7 Repeat the procedure in steps 5 and 6 to set the end time.

F.FWD ▶▶▶

8

STOP PLAY

ONE TIME PROGRAM

PROGRAM NUMBER 1

DATE 10/23 MON

START TIME 07:30

END TIME 08:30

CHANNEL 3

REC SPEED SP

Select the desired channel.

• If you have connected the unit to a cable box or satellite box as the Connection on page 1, select the VCR to channel 3 or 4 (the RF output channel of the VCR). Then, select the desired channel at the cable box or satellite box. Leave the cable box or satellite box on for timer recording.

F.FWD ▶▶▶

9

STOP PLAY

ONE TIME PROGRAM

PROGRAM NUMBER 1

DATE 10/23 MON

START TIME 07:30 PM

END TIME 08:30 PM

CHANNEL 3

REC SPEED SP

Select the desired recording speed.

C.RESET EXIT

F.FWD ▶▶▶

10 Turn off the VCR for recording.

STANDBY-ON

• TIMER indicator on the VCR lights up.

Hint

• To go back one step, press [REW ◀◀] (during steps 3 to 9).

To Check, Correct, or Cancel a Timer Program

- 1) Turn the power on by pressing [STANDBY-ON].
- 2) Select main menu by pressing [MENU].
- 3) Select "TIMER PROGRAMMING" by pressing [PLAY ▶] or [STOP ■]. Then, press [F.FWD ▶▶].
- 4) Select the program number which you want to check by pressing [PLAY ▶] or [STOP ■]. The details of the program you selected will appear on the TV screen.
- Go to the digit you want to change by pressing [F.FWD ▶▶] or [REW ◀◀]. Then, enter correct numbers by pressing [PLAY ▶] or [STOP ■].
- You may cancel the entire program by pressing [REW ◀◀] while the program number flashes.
- 5) Press [C.RESET/EXIT] to exit.
- 6) Press [STANDBY-ON] to return to timer stand-by mode.

Hints for Timer Recording

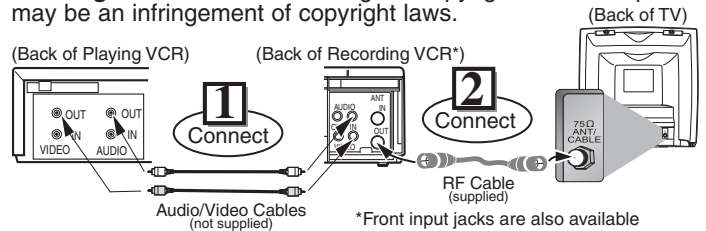
- If there is a power failure or the unit has been unplugged for more than 30 seconds, the clock setting and all timer settings will be lost.
- If the tape runs out before the end time, the unit will switch to the Stop mode immediately, eject the tape and the power will be turned off. The TIMER indicator will flash.
- If a tape is not in the unit or does not have the record tab, the TIMER indicator flashes and timer recording cannot be performed. Please insert a recordable tape.
- When all the Timer Recording are completed, the TIMER indicator flashes. To play or eject the recorded tape, press [STANDBY-ON] first, and then press [PLAY ▶] or [EJECT ▲].

To cancel a Timer Recording that is in progress

Press [STOP/EJECT ◻ ▲] on the unit.

Copying a Video Tape

Warning: Unauthorized recordings of copyrighted video tapes may be an infringement of copyright laws.



- 1) Insert a pre-recorded tape into the playing VCR.
- 2) Insert a tape with its record tab into the recording VCR.
- 3) Press [SPEED] on the remote control of the recording VCR to select the desired recording speed (SP/SLP).
- 4) Select the "L1" or "L2" position on the recording VCR.
 - To use the input jacks on the back of this unit, select "L1" position by pressing [0], [0], [1] on the remote control or [CHANNEL ▲/▼].
 - To use the input jacks on the front of this unit, select "L2" position by pressing [0], [0], [2] on the remote control or [CHANNEL ▲/▼].
- 5) Press [RECORD] on the recording VCR.
- 6) Begin playback of the tape in the playing VCR.
- 7) To stop recording, press [STOP/EJECT ◻ ▲] on the recording VCR, then stop playback of the tape in the playing VCR.

Hint

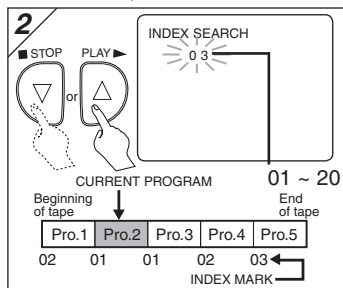
- For best results during dubbing, use the VCR's front panel controls whenever possible. The remote control might affect the playing VCR's operation.
- Always use video-quality shielded cables with RCA-type connectors. Standard audio cables are not recommended.
- You can use a video disc player, satellite receiver, or other audio/video component with A/V outputs.
- "L1" or "L2" is found before the lowest memorized channel. (Example: CH02)
- "L2" input jacks are on the front of this unit.

10. Special Features

Index Search

You can skip the program backward and forward by the Index Mark.

- Insert a tape into this unit.



After searching,



Hint

- The unit records an index mark at the beginning of the recording when you make a recording. There should be time gap between index marks for the Index Search.

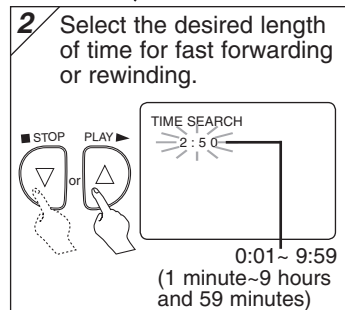
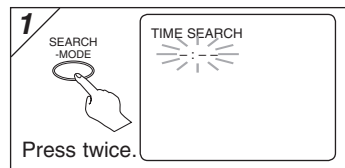
Hints for Index Search & Time Search

- These functions are not available during recording.
- Press [STOP ■] to stop the search.
- If the end of the tape is reached during a Search, the VCR will cancel the search and rewind the tape.

Time Search

You can search backward and forward a specific length of time on a tape.

- Insert a tape into this unit.



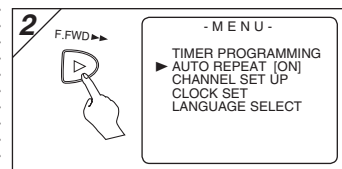
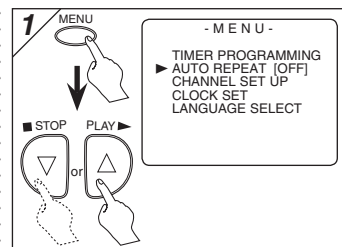
After searching,



Auto Repeat

This function will playback a tape repeatedly from the beginning when the tape reaches to the end.

- Insert a tape into this unit.



Hint

- To cancel Auto Repeat, follow steps 1-2 above. Then, press [F.FWD ►] so that [OFF] appears beside AUTO REPEAT. Press [C.RESET/EXIT] to exit.
- If menu remains on the TV screen at step 3), press [C.RESET/EXIT] to exit.

11. Information

MAGNAVOX LIMITED WARRANTY

FUNAI CORP. will repair this product, free of charge in CANADA in the event of defect in materials or workmanship as follows :

DURATION :

PARTS : FUNAI CORP. will provide parts to replace defective parts without charge for one (1) year from the date of original retail purchase. Certain parts are excluded from this warranty.
LABOR : FUNAI CORP. will provide the labor without charge for a period of ninety (90) days from the date of original retail purchase.

LIMITS AND EXCLUSIONS :

THIS WARRANTY IS EXTENDED ONLY TO THE ORIGINAL RETAIL PURCHASER. A PURCHASE RECEIPT OR OTHER PROOF OF ORIGINAL RETAIL PURCHASE WILL BE REQUIRED TOGETHER WITH THE PRODUCT TO OBTAIN SERVICE UNDER THIS WARRANTY.

This warranty shall not be extended to any other person or transferee.

This warranty is void and of no effect if any serial numbers on the product are altered, replaced, defaced, missing or if service was attempted by AN UNAUTHORIZED SERVICE CENTER. This limited warranty does not apply to any product not purchased and used in CANADA.

This warranty only covers failures due to defects in material or workmanship which occurs during normal use. It does not cover damage which occurs in shipment, or failures which are caused by repairs, alterations or product not supplied by FUNAI CORP., or damage which results from accident, misuse, abuse, mishandling, misapplication, alteration, faulty installation, improper maintenance, commercial use such as hotel, rental or office use of this product or damage which results from fire, flood, lightning or other acts of God.

THIS WARRANTY DOES NOT COVER PACKING MATERIALS, ANY ACCESSORIES (EXCEPT REMOTE CONTROL), ANY COSMETIC PARTS, COMPLETE ASSEMBLY PARTS, DEMO OR FLOOR MODELS.

FUNAI CORP. AND ITS REPRESENTATIVES OR AGENTS SHALL IN NO EVENT BE LIABLE FOR ANY GENERAL, INDIRECT OR CONSEQUENTIAL DAMAGES ARISING OUT OF OR OCCASIONED BY THE USE OF OR THE INABILITY TO USE THIS PRODUCT. THIS WARRANTY IS MADE IN LIEU OF ALL OTHER WARRANTIES, EXPRESS OR IMPLIED, AND OF ALL OTHER LIABILITIES ON THE PART OF FUNAI, ALL OTHER WARRANTIES INCLUDING THE WARRANTY OF MERCHANTABILITY AND FITNESS FOR A PARTICULAR PURPOSE, ARE HEREBY DISCLAIMED BY FUNAI AND ITS REPRESENTATIVES IN CANADA.

ALL WARRANTY INSPECTIONS AND REPAIRS MUST BE PERFORMED BY AN AUTHORIZED SERVICE CENTER. THIS WARRANTY IS ONLY VALID WHEN THE UNIT IS CARRIED-IN TO AN AUTHORIZED SERVICE CENTER.

THE PRODUCT MUST BE ACCOMPANIED BY A COPY OF THE ORIGINAL RETAIL PURCHASE RECEIPT. IF NO PROOF OF PURCHASE IS ATTACHED, THE WARRANTY WILL NOT BE HONORED AND REPAIRS COSTS WILL BE CHARGED.

ATTENTION :

FUNAI CORP. RESERVES THE RIGHT TO MODIFY ANY DESIGN OF THIS PRODUCT WITHOUT PRIOR NOTICE.

To locate your nearest AUTHORIZED SERVICE CENTER or for general service inquiries, please contact us at :

FUNAI CORPORATION
Customer Service

Tel: 1-800-605-8610
<http://www.funai-corp.com>

19900 Van Ness Avenue, Torrance, CA 90501

Maintenance

Servicing

If this unit become inoperative, do not try to correct the problem by yourself. There are no user-serviceable parts inside. Turn off, unplug the power plug, and please call our help line mentioned on page 1 to locate an Authorized Service Center.

Cabinet Cleaning

- Wipe the front panel and other exterior surfaces of the VCR with a soft cloth immersed in lukewarm water and wrung dry.
- Never use a solvent or alcohol. Do not spray insecticide liquid near the VCR. Such chemicals may cause damage and discoloration to the exposed surfaces.

Auto Head Cleaning

- This unit automatically cleans video heads as you insert or remove a cassette, so you can see a clearer picture.
 - Playback picture may become blurred or interrupted while the TV program reception is clear. Dirt accumulated on the video heads after long periods of use, or the usage of rental or worn tapes can cause this problem. If a streaky or snowy picture appears during playback, the video heads in your VCR may need to be cleaned.
1. Please visit your local Audio/Video store and purchase a good quality VHS Video Head Cleaner.
 2. If a Video Head Cleaner does not solve the problem, please call our help line mentioned on page 1 to locate an Authorized Service Center.

NOTES:

- Remember to read the instructions included with the video head cleaner before use.
- Clean video heads only when problems occur.

Free Manuals Download Website

<http://myh66.com>

<http://usermanuals.us>

<http://www.somanuals.com>

<http://www.4manuals.cc>

<http://www.manual-lib.com>

<http://www.404manual.com>

<http://www.luxmanual.com>

<http://aubethermostatmanual.com>

Golf course search by state

<http://golfingnear.com>

Email search by domain

<http://emailbydomain.com>

Auto manuals search

<http://auto.somanuals.com>

TV manuals search

<http://tv.somanuals.com>