



## Leica Compact Cameras

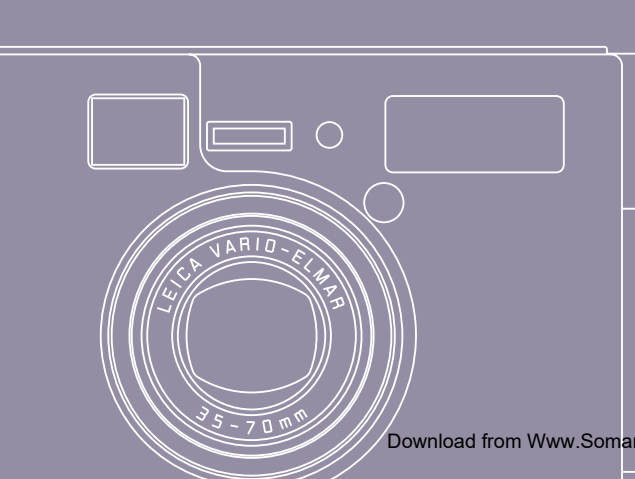
LEICA C2 new

LEICA C3 new

LEICA C1

LEICA minilux

LEICA minilux zoom



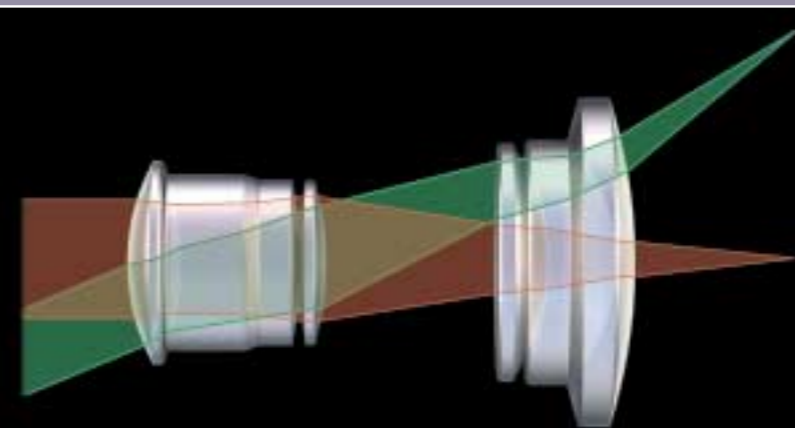


**Powerful optics, handily packaged** Leica is much more than just a name. It is a term that conjures an image of the highest optical and mechanical quality. Based on more than 100 years of experience, Leica designs lenses that are unequalled around the world. They are an indispensable tool for many great photographers. That applies, of course, to the legendary rangefinder cameras of the Leica M line and the single-lens-reflex cameras of the Leica R line. But the handy Leica compact cameras too, are very impressive, not only because of their ease of use and handsome styling, but above all because of their optical performance. All lenses are designed by Leica, using high-grade optical glass. The imaging performance stands out for delivering brilliant colors, crisp contrasts and sharp details. How well the most diverse situations and subjects can be captured by the five powerful compact cameras from Leica is demonstrated impressively by the pictures taken by Parisian photographer Florence Levillain. Whether it is a quick snapshot or a carefully composed photograph, the line of Leica compact cameras offers exactly the right model for every need. Which is the right one for you ?



**Take better pictures : LEICA C2** With the new, fully automatic LEICA C2 you preserve the important and the beautiful moments of your life in a very special way. Family, festivities, leisure time : irreplaceable experiences become memorable photographs. And that with the greatest of ease, because in its modern aluminum body, the LEICA C2 combines highly refined technology and uncomplicated operating elements. Its high-grade zoom lens covers the entire bandwidth of typical snapshot situations – from portraits to group photos. Numerous small helpers ensure the best possible results : from the multi-pattern autofocus that positions sharpness in the right place, even with complex subjects, all the way to the correction of backlit scenes and the particularly effective stroboscopic pre-flash that prevents the red-eye effect. Therefore you simply take more good pictures. And so that you won't miss any special moments while you are traveling, the LEICA C2 as the smallest and lightest of Leica compact cameras fits in every shirt pocket or handbag.

**The 35–70 mm f/4.6–8.6 LEICA VARIO-ELMAR lens** assures outstanding pictures in practically all situations. The complex optical system of 7 lens elements in 6 groups, arranged as shown in the graphic illustration, was designed internally by Leica, using high-grade optical glasses throughout. Its benefit : pictures that will excite you. You are bound to appreciate the excellent sharpness and color rendition all the more when you have the nicest pictures enlarged to poster size.



**LEICA C2** Very simply : more good pictures ! Be it leisure time, family or a festivity, with the C2, you capture important moments in impressive photographs.

— **Best results**

With the LEICA C2 you are certain to achieve more good pictures. Because the legendary quality of Leica lenses is also embodied in the C2 to assure you of razor-sharp pictures with brilliant colors. Electronic helpers enable you to concentrate fully on what is so important : unencumbered photography.



— **Always at your service**

Whether you are out in nature, rough-housing with your kids or celebrating with friends : the LEICA C2 is always ready. Small and light, it fits in most any pocket. And it is so easy to use that you can capture every situation. If you wish, you can also include the day and the time, or the date right on your favorite pictures.

— **Beautifully packaged**

For decades, Leica cameras have distinguished themselves for their unique styling. The LEICA C2 also stands out for its beautiful, robust aluminum body and its ergonomic operating elements. The transparent plastic box supplied with it makes it attractive and safe to carry the camera.

— **Guaranteed quality**

We are aware of the high quality that is expected of a Leica and for how long our cameras are expected to last. That is also why we offer an unusually long guarantee of 3 years for the LEICA C2.



**Balanced exposure** Thanks to multi-pattern metering, you can enjoy the dependability of the LEICA C2 for a balanced exposure in every situation. Automatic recognition of a backlit situation even makes sure that the main subject is illuminated with fill-in flash if that should be necessary. This makes it far more likely that a child on a swing will be pictured much better than before.

**Pre-flash prevents the red-eye effect** The red eyes that are typical of flash exposures spoil the nicest pictures. That is why Leica incorporated a stroboscopic pre-flash in the LEICA C2 that causes the pupils of the eyes to contract, thus very effectively reducing the red-eye effect in the picture.

**Protection provided by the Prewind System** If the LEICA C2 is opened by mistake, your pictures are not lost : The Prewind System, however, first winds the entire film out of a freshly inserted film cartridge on to the take-up spool and then winds the exposed pictures back into the cartridge. As a result, your pictures are securely protected. The exposure counter shows how many pictures remain to be taken.

**Variable autofocus** In addition to spot autofocus, the LEICA C2 also offers you the option of switching over to multi-pattern autofocus. It measures with up to five zones. The advantage is demonstrated by the illustration on the right : Even though the main subject is not in that center of the picture, the C2 puts the sharpness where it belongs, namely on the child. This is also particularly advantageous in group photographs. Because many cameras focus on the uninteresting background right between two heads, whereas the C2 recognizes the fact that it is the people that matter.



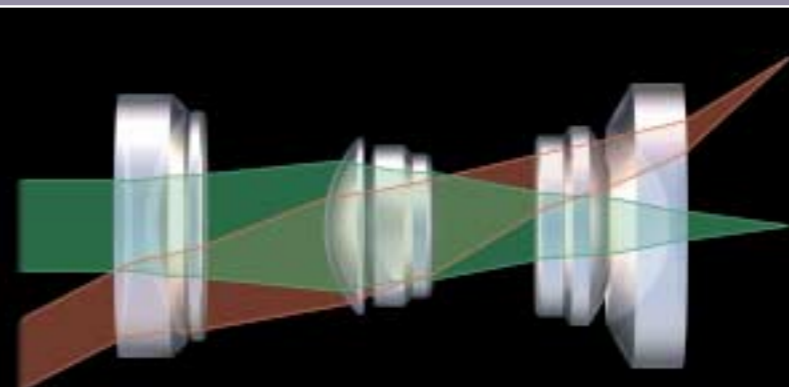
**All-around zoom lens** Would you like to get close to your subject or would you prefer to include plenty of surroundings ? The universal range of focal lengths from 35 to 70 mm leaves all possibilities open. Whatever pictorial expression you prefer, the picture quality is so good at every setting that even when they are enlarged, the pictures are still impressive for their finely rendered details and for the delicate nuances of their colors.





**Discover new perspectives : LEICA C3** If you are looking for new perspectives, you shouldn't have to cope with a tight angle of view. The LEICA C3 simply lets you see more because the range of focal lengths of its Leica zoom lens begins with a 28 mm wide-angle setting : This creates great new opportunities, especially in landscape- and architectural photography, and the sides are no longer cut off in interior- and group photographs. But that isn't all : The LEICA C3 also combines an unusually good lens speed with its 28–80 mm range of focal lengths. This makes it much easier for you to master difficult room situations as well as unfavorable light conditions. So, if you were looking for an exclusive compact camera with excellent optics, ergonomic design and a broad range of applications, the LEICA C3 is the perfect answer.

**The 28–80 mm f/3.6–7.9 LEICA VARIO-ELMAR ASPH. lens** has a large glass front element. The 28 mm wide-angle setting is ideal for landscape- and architectural photographs, as well as many other subjects. The focal length range extends to 80 mm, which is excellent, for example, for portraits. The extraordinary know-how in optical computation at Leica is based on decades-long experience, and this leads to unique quality standards. That is why this zoom lens offers you a speed that is unequalled in its class. As a result, you are able to make better pictures in difficult light conditions.



**LEICA C3** Whether you use it in your profession or in your leisure time, for architecture or for landscapes, the LEICA C3 expands your angle of view.

— **Everything in view**

Panoramic landscapes, groups of people, city views – with the 28 mm wide-angle setting you simply capture more on your pictures. A decisive advantage, when no one has to be left out in group photos or houses and monuments can be captured completely. And the aspheric lens elements in the Leica lens render your subject with sharpness, rich contrast and natural colors, even under poor light conditions.



— **No compromises**

From Leica you can expect that your camera meets the highest quality standards and that it is made of high-grade materials. From the lightweight aluminum body housing and its precise mechanisms to the zoom lens, which is fabricated completely of genuine optical glasses.

— **Secure handling**

The C3, with its elegant aluminum design, has an ergonomic grip, so that it will also fit well in your hands when you want to take pictures spontaneously while you are traveling. All its control elements are laid out for easy operation. A practical plastic box is included for safe transportation.

— **Guaranteed quality**

We are aware of the high quality that is expected of a Leica and for how long our cameras are expected to last. That is also why we offer an unusually long guarantee of 3 years for the LEICA C3.



**Creativity without bounds** Give a free rein to your creativity ! There are no limits on the choice of subjects, because the zoom lens covers everything, from landscapes (28 mm), for example, to portraits (80 mm). At a Leica level of quality, of course, with impressive picture quality, even in big enlargements.

**Utmost convenience** The LEICA C3 is equipped with useful automatic controls that make the camera delightfully easy to operate and that lead to very good pictures : Exposure metering (dependable center-weighted integral metering with measured value storage), automatic programs with automatic exposure control, fast, active infrared autofocus with focus storage and automatic flash activation in low light situations (which can be switched off). And all that with a flash guide number of up to 20 for a great range. This enables you to take worry-free pictures.

**Serial date imprinting** This makes good sense : With the dating feature of the LEICA C3, you can imprint the time or the date on your pictures. Even after a long time, you'll still know when the pictures were made.

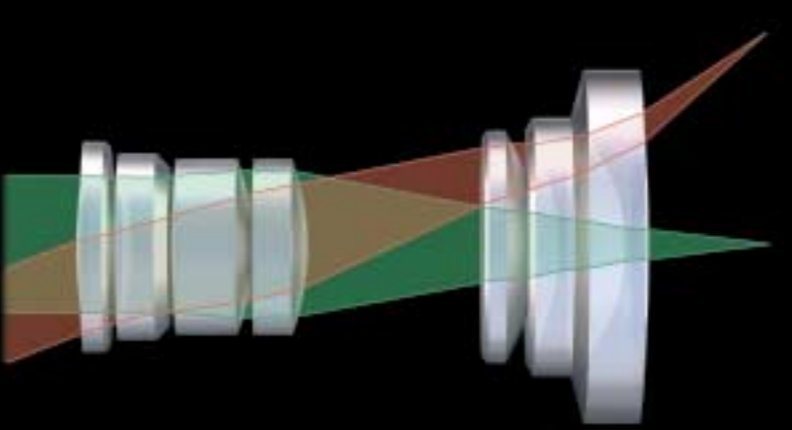
**Long time exposures** The good speed that the zoom lens of the LEICA C3 features in spite of its compact design is especially helpful in difficult light conditions. And there is more : If you want to take pictures at night, for instance of a starry sky, or of a harbor scene, a fireworks display or a thunderstorm – the C3 offers the "T" mode for individual time exposures of up to 99 seconds. By pressing the release button once, you start the exposure and the elapsed seconds indication in the display ; pressing it a second time ends the exposure.





**Capture the moment : LEICA C1** Its styling already suggests its origin in an elegant manner. The timelessly beautiful design is intentionally reminiscent of the legendary Leica M cameras and their clear, modular configuration. And the interior values that the robust aluminum body protects are all the more indicative of a genuine Leica. Thanks to its superb optics, the LEICA C1 enables you to capture brilliant shots of all those fleeting moments that deserve to be preserved. Telephoto shots in particular are no problem, because the 105 mm focal length on the C1 is the longest of any Leica compact camera. The zoom lens was computed especially for this camera and it incorporates complex aspherical glass lens elements that yield extraordinary imaging performance in a compact design.

**The 38-105 mm f/4.0-10.5 LEICA VARIO-ELMAR ASPH. lens** is remarkable for its outstanding sharpness, contrast and color rendition over its entire range of focal lengths. Highly specialized technology made the use of aspherical lens surfaces possible : Their manufacture is very complex and they have to be fabricated with extreme precision. This extraordinary effort is amply rewarded, however, by the very high image quality rendered by lenses like this one. The configuration of 7 lens elements in 7 groups is shown in the accompanying diagram.



**LEICA C1** To bridge distances, to capture details : The LEICA C1 is a dependable tool for such purposes.

— **Simply get closer**

Never before have you been able to take such beautiful pictures so quickly. Select the cropping, press the button, finished : The camera has focused the image and measured the exposure in fractions of a second. You are free to concentrate fully on your subject. The zoom lens on the LEICA C1 enables you to draw your subject closer than any other Leica compact camera.



— **Hard to abuse**

The robust aluminum body - available in black or silver finish - doesn't get bruised easily. Armoring assures a good grip and prevents slipperiness. Like all Leica C cameras, the LEICA C1 is supplied in a translucent plastic box that protects it while it is being transported.

— **Easy to operate**

All operating elements are easy to reach and convenient to use, even when the camera is at your eye. The rocker switch for zooming, for instance, enables you to select the best cropping quickly and precisely.



**Brilliant pictures** You'll be delighted with your own pictures : Sharpness, color and contrast are exactly right, thanks to the aspherical lens, and they are still impressive as big enlargements. Automatic exposure control and add-on flash ensure that the photographs are always properly exposed. This, for example, also lets you create dramatic portraits.



**Fast reaction** The LEICA C1 is designed not to miss a moment : The active infrared autofocus sets the lens for the correct distance within a fraction of a second. And with shutter speeds of up to 1/500 second, the C1 delivers needle-sharp pictures, even of fast-moving subjects. You can quickly capture a face with a particularly lovely smile. Measured value storage for distance and exposure are especially helpful in such cases.

**Data overview** The LC display on the top of the camera enables you to check battery condition, operating mode, correction factors and selftimer at all times. And if you wish, you can include important picture data directly on the film.

**Flexibility in picture composition** Because of its broad range of focal lengths, which extends from a 38 mm wide-angle to a 105 mm telephoto, the LEICA C1 gives you great latitude in picture composition. This enables you to record the very same scene in many different aspects.





# Technical Data LEICA C2 / C3 / C1



# Accessories for LEICA C2 / C3 / C1 and LEICA minilux / LEICA minilux zoom

Camera	LEICA C2	LEICA C3	LEICA C1
<b>Order No.</b>	18 110	18 120	silver : 18 080, black : 18 081
<b>Camera type</b>	Compact 35 mm autofocus viewfinder camera with zoom lens		
<b>Film format</b>	35 mm film ; 24 x 36 mm format	35 mm film ; 24 x 36 mm format	35 mm film ; 24 x 36 mm format
<b>Camera body</b>	Deep-drawn aluminum body, automatic lens cover		
<b>Lens</b>	35-70 mm f/4.6-8.6 LEICA VARIO-ELMAR (7 elements in 6 groups)	28-80 mm f/3.6-7.9 LEICA VARIO-ELMAR ASPH. (8 elements in 6 groups)	38-105 mm f/4-10.5 LEICA VARIO-ELMAR ASPH. (7 elements in 7 groups)
<b>Autofocus system</b>	Passive phase-detection multi-zone autofocus system	Active infrared autofocus system	Active infrared autofocus system
<b>Viewfinder</b>	Real-image type zoom viewfinder with display of flash, autofocus and exposure metering symbols ; diopter compensation (not on the LEICA C1)		
<b>Viewfinder magnification</b>	0.35 x with 35 mm to 0.67 x with 70 mm ; field of view is approximately 80 % of film format	0.33 x with 28 mm to 0.83 x with 80 mm ; field of view is approximately 80 % of film format	0.38 x with 38 mm to 1.05 x with 105 mm ; field of view is approximately 85 % of film format
<b>Focusing range</b>	0.6 m (2 ft) to infinity	0.8 m (2 ft 7 in) to infinity	0.8 m (2 ft 7 in) to infinity
<b>Smallest object field</b>	190 x 285 mm (7 1/2 x 11 1/4 in)	210 x 315 mm (8 1/4 x 12 3/8 in)	160 x 240 mm (6 3/16 x 9 1/2 in)
<b>Exposure operating modes</b>	Programmed automatic exposure control with automatic flash activation (Auto), flash on, flash off, Auto with stroboscopic pre-flash for red-eye reduction, Auto Slow (with longer exposure time)	Programmed automatic exposure control with automatic flash activation (Auto), flash on, flash off, Auto with stroboscopic pre-flash for red-eye reduction, Auto Slow (with longer exposure time) ; T (time exposures up to 99 s), manual backlight correction ; storage of the selected program is possible (C3 only)	
<b>Exposure metering</b>	Center-weighted two-zone metering sensor with backlight recognition	Center-weighted metering	Center-weighted metering
<b>Focusing modes</b>	Multi-AF, Spot-AF, manual infinity	Autofocus, manual infinity	Autofocus, manual infinity
<b>Measured value storage</b>	Storage of the metered exposure value and the autofocus distance is activated by gently pressing the release button to the first pressure point		
<b>Exposure times</b>	1/330 s-2 s	1/370 s-99 s, automatic change to "B" in the flash modes SLOW ON, SLOW and OFF	1/500 s-99 s, automatic change to "B" in the flash modes SLOW ON, SLOW and OFF
<b>Flash range with ISO 100/21° slide film</b>	Wide-angle : 3 m (10 ft) ; Telephoto : 1.63 m (5 ft 4") ; Guide number : 14 (46 ft)	Wide-angle : 3.9 m (10 ft 10") ; Telephoto : 2.5 m (8 ft 2") ; Guide numbers : Wide-angle : 14 (46 ft), Telephoto : 20 (66 ft)	Wide-angle : 3.25 m (10 ft 8") ; Telephoto : 1.24 m (4 ft) ; Guide number : 13 (43 ft)
<b>Data imprinting</b>	Integrated ; Imprinting of date or day and time	Integrated ; Imprinting of date or time	Integrated ; Imprinting of date or time
<b>Film speed setting</b>	Automatic film speed setting for DX-coded films from ISO 50/18° to ISO 3200/36° ; Films without DX-coding and films with speeds under ISO 50/18° are set at ISO 100/21° ; Films with speeds over ISO 3200/36° are set at ISO 3200/36°		
<b>Exposure series</b>	The exposure series function is activated when the release button is pressed continuously		
<b>Selftimer</b>	10-second exposure delay	10-second exposure delay	10-second exposure delay
<b>Power supply</b>	Lithium battery CR 123A	Lithium battery CR 123A	Lithium battery CR 123A
<b>Dimensions (W x H x D)</b>	121 x 66 x 39.5 mm (4 7/8 x 2 5/8 x 1 9/16 in)	129 x 67 x 46 mm (5 x 2 3/8 x 1 7/8 in)	129.5 x 67 x 46 mm (5 1/10 x 2 5/8 x 1 13/16 in)
<b>Weight (without battery)</b>	240 g (8.5 oz)	270 g (9.5 oz)	260 g (9.2 oz)
<b>Delivery scope</b>	Camera with carrying strap, wrist loop, battery and semi-transparent plastic box		
<b>Other features</b>	Tripod socket, film cartridge viewing window, automatic film advance, manual start of the rewind function is possible		

## LEICA C2 / C3 / C1



**Leather case** LEICA C3 / C1 with belt loop  
**Order No. 18 524**



**Plastic box** LEICA C3 / C1 semi-transparent  
**Order No. 439-614.007-000**



**Soft leather pouch** LEICA C2 with belt loop  
**Order No. 18 555**



**Plastic box** LEICA C2 semi-transparent  
**Order No. 439-614.017-000**

**Wrist loop**  
**Order No. 18 519**

**Carrying strap** approx. 50 cm (20 in) long  
**Order No. 18 518**

**Mini-tripod** with ball- and socket head, fits in any pocket  
**Order No. 14 320**

## LEICA minilux / LEICA minilux zoom



**Mini-tripod** with ball- and socket head, fits in any pocket  
**Order No. 14 320**

**Panorama Adapter** Masks the film gate to a format of 12 x 36 mm. The resulting prints have a format ratio of 1:3. Adapter is inserted into the film gate before the film is loaded. Supplied with a case.  
**Order No. 18 511**



**LEICA CF accessory flash** unit for the LEICA minilux zoom : with **ISO flash foot** with central- and signal contacts. **Guide Number** 20 (with ISO 100/21° films). **Angle of flash coverage** corresponds to the angle of view of a 35 mm lens on a 35 mm camera. **Color temperature** approx. 5900°K. **Flash duration** auto : 1/30000-1/200 s ; manual : 1/1200 s. **Number of flashes per set of batteries** approx. 280 (with alkali-manganese batteries). **Flash recharging time** approx. 0.5-5 s (with alkali-manganese batteries). **Operating modes** OFF ; manual : full power ; auto 1 : automatic control, f/2.8 at ISO 100/21° ; auto 2 : automatic control, f/5.6 at ISO 100/21° ; **Operating voltage** 3V ; **Power supply** Two AA batteries (IEC LR 063) ; **Dimensions** (W x H x D) 56 x 82 x 28 mm (2 1/16 x 3 1/8 x 1 1/16 in) ; **Weight** (without batteries) approx. 70 g (2 1/2 oz). **Order No. 18 541**

**Electric cable release** approx. 30 cm (11 1/4 in) long  
**Order No. 18 540**

**Accessory Databack** for optional imprinting of day with time or date on the film. With film cartridge viewing window. Used in place of the normal back cover. With light titanium finish.  
**Order No. 18 525**

**Viewfinder correction lenses** for adapting the viewfinder to small seeing deficiencies.  
+1 diopter **Order No. 18 530**  
-1 diopter **Order No. 18 531**

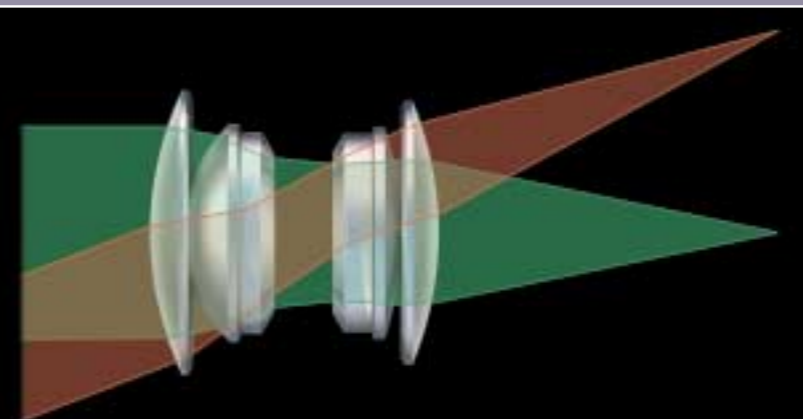
**Carrying strap** approx. 50 cm (20 in) long  
**Order No. 18 518**

**Soft leather pouch** with belt loop and extra compartment for the Panorama Adapter. For LEICA minilux **Order No. 18 509** For LEICA minilux zoom **Order No. 18 513**



It masters all lighting conditions : LEICA minilux Be it sundown or a dimly lit tavern atmosphere, the high-speed lens of the LEICA minilux masters virtually every situation and produces outstanding pictures, even of high-contrast scenes. Its  $f/2.4$  speed and its superb imaging quality are unusual in compact cameras, placing it in line with the legendary lenses of the Leica R- and M camera systems. Where others already had to add flash, you can still take hand-held photographs and take full advantage of pleasing natural light. Yet you also have the option of deliberately adding flash in order to achieve a particular lighting mood. No matter whether you use it in the fully automatic mode or in the manual control mode : With the LEICA minilux you have all the possibilities at your command.

**The 40 mm  $f/2.4$  LEICA SUMMARIT lens** is a top-quality lens that will instantly amaze you. Its 6 glass lens elements in 4 groups already achieve excellent performance in terms of contrast and resolving power at full aperture. The 40 mm focal length renders a distortion-free image of the entire field of view. Special coatings of the lens surfaces assure neutral colors and rich contrast. Because of its excellent exposure metering, the LEICA minilux is also predestined for slide photography.



# LEICA minilux

The luxury of powerful optics plus great creative freedom : A dream for particularly demanding photographers.

## — High-grade materials

The titanium body with leather-covered handling surfaces and a tripod socket are exemplary proof of the extraordinarily high quality demands that Leica places on all the materials and finishes. The metal film channel, for instance, assures the flatness of the film with an accuracy of one hundredth of a millimeter. High-grade optical glasses are used for the complex manufacture of the lens.



## — Complete information in view

The LC display provides a quick overview by means of display figures for shutter speed and aperture, battery condition, exposure counter, time exposures, selftimer, flash function and exposure correction.

## — Convenient handling

With the focusing wheel, you have everything under control : Switching the camera on and off, setting the aperture and the distance when you select manual focusing. That way you can always implement your creative decisions with judicious control.

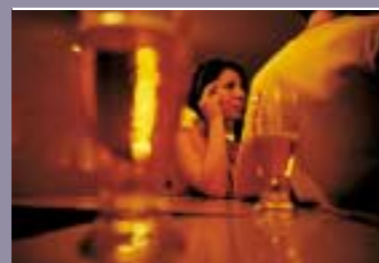


**Take pictures like a pro** The LEICA minilux is the optimal tool for extracting the very best from every subject. As a fully automatic compact camera, it stands out because its performance is markedly above this class. The decisive feature is undoubtedly its fast high-performance lens that delivers brilliant pictures even under difficult light conditions. Sharpness and contrast are additional plus points that have been honored with numerous awards, so that professional photographers gladly reach for this unusual camera.

**Capture sequences** Record fleeting events in the form of sequences right from the start : just keep the shutter release button pressed and the LEICA minilux will promptly take another picture, so that you can get up to 4 pictures in sequence.

**Informative viewfinder** The clear and bright viewfinder shows everything that is necessary for a successful exposure : markings for autofocus, exposure, close-up range and panorama cropping. Two light-emitting diodes (LEDs) signal focusing, exposure metering and flash readiness.

**Automatic or manual ?** The LEICA minilux offers you all the amenities of a fully automatic camera, along with the option of judiciously implementing your own photographic ideas at any time :



**Autofocus or manual focusing** When you want to react quickly and to take good photographs conveniently, the autofocus is there for you with pinpoint accurate focusing from 70 cm (2 ft 3 1/2 in) to infinity. By gently pressing the shutter release button partway, you can lock the focus- and the exposure settings as needed, so that you can then calmly select the best cropping. And when reflections or objects interfere with the automatic focusing, for instance when photographing a window display, you can set the distance manually and thereby establish the desired range of sharpness.

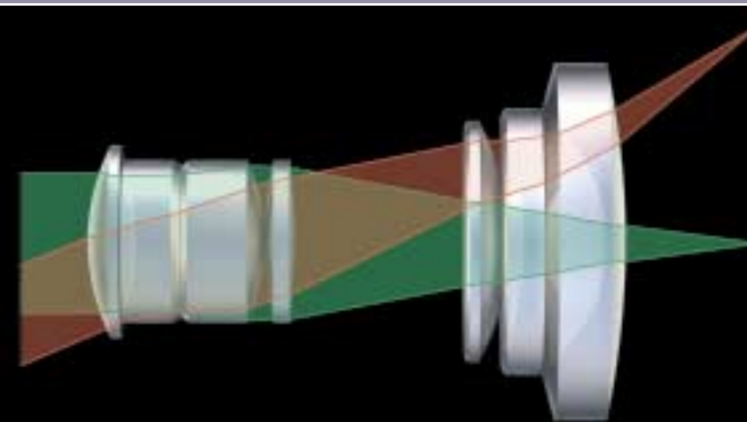
**Automatic exposure control with creative input possibilities** The precise programmed automatic exposure control assures the correct exposure and if you wish, the flash activates itself automatically when the ambient light is too low. However, if you wish to use the depth of field deliberately for composition purposes, simply pre-set the aperture and the automatic shutter speed control will select the perfect exposure time for that setting. The flash can be switched off or it can be added intentionally, perhaps to enhance a portrait of a person standing in shaded area in front of a bright background.





**Vary the cropping : LEICA minilux zoom** You place very high demands on the lens of your camera, you would like to be able to take uncomplicated snapshots and to vary the cropping ? Then you should opt for the top camera among compact zoom models : the LEICA minilux zoom. With its versatile zooming range from 35 to 70 mm you are also optimally equipped for all those subjects that deserve different croppings, such as portraits, street scenes or landscape photographs. A brief touch with a finger and you quickly find just the right cropping. You very quickly capture delightful photographs with technical perfection, because the classic titanium body contains a precise programmed automatic exposure control to which you can safely entrust all the important exposure settings. But you can also take control yourself, perhaps to use measured value storage to place sharpness and exposure away from the center of the picture. One thing is certain : The fastest zoom lens of all the Leica compact cameras also performs well for you in low light situations.

**35-70 mm f/3.5-6.5 LEICA VARIO-ELMAR** The zoom lens on the LEICA minilux camera is a fast 2x zoom lens. Its 7 lens elements in 6 groups impressively demonstrate the optical know-how of Leica, which enjoys the highest reputation all over the world. To you, this means in effect : You benefit both from the versatility of the universally practical zooming range as well as from outstanding imaging quality of this superb lens.



# LEICA minilux zoom

Capture natural moods and render your subjects with perfection : The small one with the big zoom accomplishes it – with outstanding image quality !

## — Titanium at its best

Not only is it handsome, it is also dependable : Both robust and compact, the timelessly elegant titanium body makes the LEICA minilux zoom a perfect companion.



## — A lens of the very best kind

Decades of experience, sophisticated computer programs and high-grade optical glasses led to the fastest zoom lens of all on Leica compact cameras. It stands up to the comparison to the famous lenses for Leica R and Leica M cameras and it covers the full range from a medium wide-angle lens to a short telephoto lens.

## — Ready at all times

No matter whether you use the accurate automatic controls or your own manual settings, you are always ready for a quick photograph. You can store specific function combinations to be in effect for a number of exposures and you can also store them permanently. The camera's display informs you comprehensively at all times of all the selected parameters.



**Individual composition** The way to successful creative picture compositions : Using measured value storage, you can also assign sharpness and exposure to subjects away from the center of the picture, you can manually set the exposure for different sections of the picture or you can manually adjust the exposure for very dark or very light subjects. The flash can be switched off for mood scenes, or it can be activated as a pre-flash or a fill-in flash. As you wish it.



**Precise controls** The distance to the subject is established precisely by the active infrared autofocus function, or if you prefer, you can set it manually yourself. In conjunction with the center-weighted exposure metering function, the programmed automatic exposure control produces well-balanced exposures. If you wish, the built-in flash activates itself automatically in low light situations. With the "B" setting, exposure times longer than 2 seconds are possible. With the "T" setting, you can even make exposures without camera shake for up to 99 seconds. In this setting, the flash is automatically switched off.

**Universal lens** You can rely on this lens in any situation : with its range of focal lengths, you can crop your pictures in a great variety of ways and the lens produces fantastic results even in low-light situations.

**Powerful expansion** Use the built-in flash or use the camera's accessory shoe to attach the accessory LEICA CF flash unit : to illuminate larger spaces or more distant subjects, or to reduce the unpleasant red-eye effect. A remote cable release and a panorama adapter are additional useful accessories.



# Technical Data LEICA minilux and LEICA minilux zoom



Camera	LEICA minilux	LEICA minilux zoom
<b>Order No.</b>	18 006	18 036
<b>Camera type</b>	High-grade compact 35 mm viewfinder camera with fast lens	High-grade compact 35 mm viewfinder camera with 2 x zoom lens and connection for external flash
<b>Film format</b>	35 mm ; 24 x 36 mm	35 mm ; 24 x 36 mm
<b>Camera body</b>	Solid, extremely resistant titanium body	Solid, extremely resistant titanium body
<b>Lens</b>	40 mm f/2.4 LEICA SUMMARIT (6 elements in 4 groups)	35-70 mm f/3.5-6.5 LEICA VARIO-ELMAR 2 x zoom lens (7 elements in 6 groups)
<b>Autofocus system</b>	Active infrared autofocus system	Active infrared autofocus system
<b>Viewfinder</b>	Real image viewfinder with markings for the autofocus metering field, for the close-up range and for panorama shots. Function displays for flash, autofocus and exposure metering.	Real image viewfinder with zoom function. Markings for the autofocus metering field, for parallax compensation for close-up pictures and for the panorama format. Function displays for flash, autofocus and exposure metering.
<b>Viewfinder magnification</b>	0.35 x ; field of view is approximately 85 % of the film format	0.33 x - 0.57 x ; field of view is approximately 83 % of the film format
<b>Focusing range</b>	0.7 m (2 ft 3 1/2 in) to infinity	0.7 m (2 ft 3 1/2 in) to infinity
<b>Smallest object field</b>	377 x 566 mm (14 7/8 x 22 1/4 in)	220 x 330 mm (8 5/8 x 13 in)
<b>Exposure operating modes</b>	Programmed automatic exposure control and aperture-priority automatic exposure control (LEICA minilux only), both with automatic flash activation (Auto), flash ON, flash OFF, Auto with red-eye reduction, Auto slow (with longer exposure times) ; B and T (time exposures up to 99 s), manual exposure override $\pm 2$ EV, storage of the selected settings is possible.	
<b>Exposure metering</b>	Center-weighted metering	Center-weighted metering with focal-length-dependent angle of view
<b>Exposure override</b>	From -2 EV to +2 EV in 1/2 EV steps	From -2 EV to +2 EV in 1/2 EV steps
<b>Focusing modes</b>	Autofocus, manual focusing	Autofocus, manual focusing
<b>Storage memory for exposure times</b>	1/400-99 s, automatic change to "B" in the exposure modes SLOW ON, SLOW and OFF	1/250-99 s, automatic change to "B" in the exposure modes SLOW ON, SLOW and OFF
<b>Flash range with ISO 100/21° slide film</b>	4.6 m (15 ft) Guide number : 11 (36 ft)	Wide-angle : 3.7 m (12 ft) ; Telephoto : 2 m (6.6 ft) Guide number : 13 (43 ft)
<b>Flash range with accessory LEICA CF flash unit</b>	Not possible	Wide-angle : 5.7 m (18.7 ft) ; Telephoto : 3.1 m (10.2 ft) Guide number : 20 (66 ft)
<b>Functions shown in the Liquid Crystal Display (LCD)</b>	Symbols or numbers indicate the exposure counter or the time remaining when the selftimer is activated, the exposure mode that has been selected, battery status, selftimer, override, film advance and rewind.	
<b>Film speed setting</b>	Automatic for films with DX coding from ISO 25/15° to ISO 5000/38°. For films without DX code or with speeds lower than ISO 25/15°, the speed is automatically set at ISO 100/21°	
<b>Exposure series</b>	The exposure series function is activated by pressing the release button continuously	
<b>Selftimer</b>	10-second exposure delay	10-second exposure delay
<b>Data imprinting</b>	Optional with accessory databack	Optional with accessory databack
<b>Power supply</b>	Lithium battery CR 123A	Lithium battery CR 123A
<b>Dimensions (W x H x D)</b>	124 x 69 x 39 / 42.5 mm (without / with databack) (4 7/8 x 2 23/32 x 1 17/32 in / 1 11/16 in)	124 x 69 x 44 / 47.5 mm (without / with databack) (4 7/8 x 2 23/32 x 1 23/32 in / 1 7/8 in)
<b>Weight (without battery)</b>	330 g (less than 12 oz)	375 g (13 1/4 oz)
<b>Delivery scope</b>	Camera with carrying strap and battery	Camera with carrying strap and battery
<b>Other features</b>	Tripod socket, film cartridge viewing window, automatic film advance, manual start of the rewind function is possible, connection for remote cable release, panorama photographs with Panorama Adapter	



my point of view

Leica Camera AG / Oskar-Barnack-Straße 11 / D-35606 Solms  
www.leica-camera.com / info@leica-camera.com  
Telephone +49(0)6442-208-0 / Fax +49(0)6442-208-333

Download from [www.Somanuals.com](http://www.Somanuals.com). All Manuals Search And Download.



## Free Manuals Download Website

<http://myh66.com>

<http://usermanuals.us>

<http://www.somanuals.com>

<http://www.4manuals.cc>

<http://www.manual-lib.com>

<http://www.404manual.com>

<http://www.luxmanual.com>

<http://aubethermostatmanual.com>

Golf course search by state

<http://golfingnear.com>

Email search by domain

<http://emailbydomain.com>

Auto manuals search

<http://auto.somanuals.com>

TV manuals search

<http://tv.somanuals.com>