



Windows[®] Small Business Server 2011 Standard

Quick Start Guide

Windows® Small Business Server 2011 Standard

Installing Your New Server

Depending on how your server came from the manufacturer, your set up steps are slightly different. Follow the instructions that apply to your server, and then follow the instructions to connect other computers to it.

- If Windows SBS 2011 Standard came preinstalled on your server, follow the instructions for Scenario 1.
- If Windows SBS 2011 Standard is not installed on your server, follow the instructions for Scenario 2.

To get started, you will need the following items

- Product Key
- Router with firewall capability
- Network cables



NOTE: For help planning your installation, see <http://go.microsoft.com/wlink/?LinkID=193016>.

Existing Server Migration

02

If you already have a Windows Server domain, you can migrate the information on your existing server to the new server. Your existing server is known as your source server, and your new server is known as your destination server. Windows Small Business Server (Windows SBS) 2011 Standard Installation includes an integrated migration experience that helps you migrate from your current version of Windows SBS. If you choose to install the server in migration mode, you will be asked for specific information about your existing installation. Before you can migrate to the destination server, you will need to have this information ready.

If you choose a migration installation, you must thoroughly plan the migration and then prepare your source server and destination server as described in the information at <http://go.microsoft.com/fwlink/?LinkID=193017>. After your preparations are complete, follow the steps in the wizard to migrate to Windows SBS 2011 Standard.



NOTE: After you prepare the source server for the migration, you have 21 days to complete the migration process and shut down the source server.

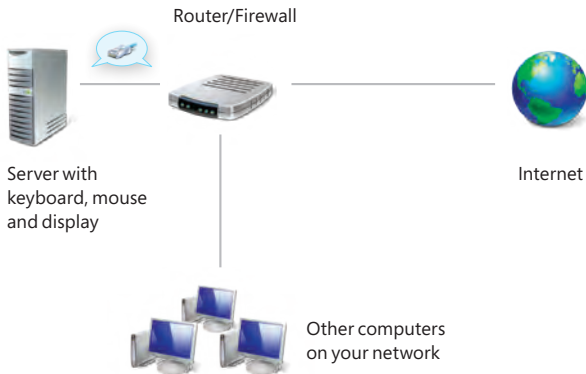
Step 1

Connect Your Server to the Network

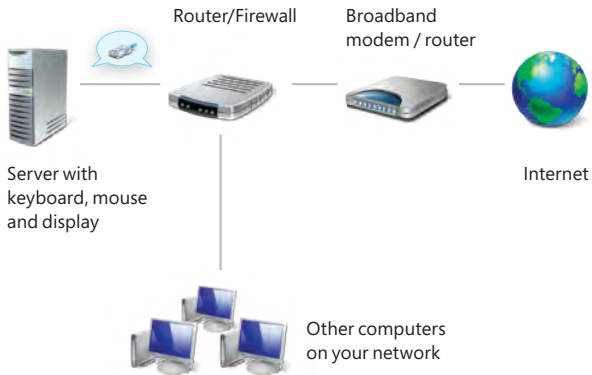
04

You will likely have one of the following network configurations:

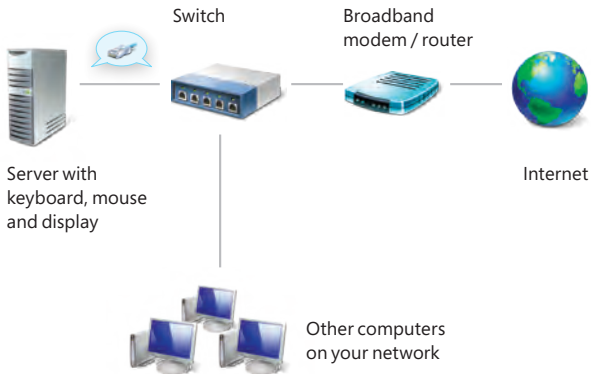
Basic network



Network with router and modem



Network with switch, router and modem



Common Networking Devices

Broadband modem	Enables your network to connect to the Internet through your Internet service provider (ISP).
Firewall	Helps secure your local network from unauthorized access from the Internet.
Router	Sends, or routes, information between your network and another network, such as the Internet.
Switch	Provides additional network connection points for computers and other devices.

For more information about network requirements and supported configurations, see <http://go.microsoft.com/fwlink/?LinkID=193018>.



NOTE: Some devices may be multipurpose, such as a router with firewall capabilities. Check your device manufacturer's documentation for more information.

To connect your server to the network:

1. Plug one end of a network cable into the network adapter on your server and the other end into the internal (local) interface on your router.



IMPORTANT: Ensure that the network cable remains connected throughout the entire installation.

2. Verify that your network hardware (such as your router) is powered on and is properly connected to the Internet.

Step 2

Setting up Your New Server: Scenario 1

Windows SBS 2011 came preinstalled on your server

1. Connect the keyboard, monitor, and mouse to the server.
2. Use an Ethernet cable to connect your server to your network, and then plug it in and turn it on.
3. Follow the on-screen instructions to finish setting up your server. The computer may restart several times.

Setting up Your New Server: Scenario 2

Windows SBS 2011 is not installed on your server

1. Connect the keyboard, monitor, and mouse to the server.
2. Use an Ethernet cable to connect your server to your network, and then plug it in and turn it on.
3. Insert the installation DVD in the DVD drive, and then restart the server.

4. Choose to boot from the DVD drive.
5. Follow the on screen instructions to finish setting up your server.



NOTE: If you are not prompted to boot from the DVD drive, you may need to configure your computer's BIOS settings so that the DVD drive is recognized as a startup disk. Different computer manufacturers have different methods for choosing the DVD drive as the startup disk. See your computer's documentation for more information.

Step 3

Complete the Getting Started Tasks to Configure Your Server and Your Network

To help you finish configuring your network, the Windows SBS 2011 Standard Console **Home** page lists the **Getting Started Tasks**. Finish these tasks as soon as possible after you install Windows SBS 2011 Standard:

1. **Connect to the Internet**: Configure your server and your network to connect them to the Internet. Click the **Connect to the Internet** task to get started.
2. **Enable Web technologies**: You must run the Internet Address Management Wizard if you want to use Remote Web Access or send and receive e-mail over the Internet. The wizard also helps you set up a new or existing domain name to work with your server. Click the **Set up your Internet address** task to get started.

3. **Protect your data:** Configure and manage server backup. Click the **Configure server backup** task to get started.
4. **Add users, computers and devices:** Enable users, computers and devices to access resources on your network, and learn how to add a shared printer to your network. Click the **Add a new user account** task to get started.
5. **Join computers to the Windows SBS 2011 Standard domain:** Use a Web browser or portable media to run the Connect Computer program on each computer that is part of the network. Click the **Connect computers to your network** task to get started.



NOTE: To connect to the Windows SBS 2011 network, a client computer must be running Windows XP Professional with Service Pack (SP) 3, Windows Vista® Business, Enterprise or Ultimate with SP2, or Windows 7 Professional, Enterprise or Ultimate.

Quick Links and Help

Where to get help

On your server

If you have questions while you are installing your new server, completing tasks in the Console, or using the productivity tools for the network, click the Help links that appear on many pages.

On the Internet

Windows SBS Technical Library:

<http://go.microsoft.com/fwlink/?LinkID=193020>

In the Community

Forums and blogs:

<http://go.microsoft.com/fwlink/?LinkID=193022>

Community resources:

<http://go.microsoft.com/fwlink/?LinkID=193023>

Requirements for client access licenses

Each user or device that accesses your network must have Windows SBS 2011 client access license (CAL) Suite. Your server software includes five CALs. For more information about purchasing additional CALs for Windows SBS 2011 Standard, see the original equipment manufacturer or retailer.

© 2010 Microsoft.

Microsoft, Windows, and the Windows logo are trademarks of the Microsoft group of companies.

X16-97957-01

Microsoft[®]

Download from [Www.Somanuals.com](http://www.Somanuals.com). All Manuals Search And Download.

Free Manuals Download Website

<http://myh66.com>

<http://usermanuals.us>

<http://www.somanuals.com>

<http://www.4manuals.cc>

<http://www.manual-lib.com>

<http://www.404manual.com>

<http://www.luxmanual.com>

<http://aubethermostatmanual.com>

Golf course search by state

<http://golfingnear.com>

Email search by domain

<http://emailbydomain.com>

Auto manuals search

<http://auto.somanuals.com>

TV manuals search

<http://tv.somanuals.com>