



# **MAMBO BW MP3 Player**

## **User's Guide**

## **Features**

### **Smart design**

Stylish, comfortable and lightweight with easy to use buttons

### **Supports various formats**

MP1, MP2, MP3, WMA, WMV, ASF, WAV

### **FM stereo radio**

The powerful search function helps you store 40 different stations (20 station of each mode).

### **Built-in recording**

You can record you favorite radio station to a recording file while listening to a radio station.

### **U disc (driver free) function**

You can operate in the portable disc directly with no drivers (WIN2000 or more advanced systems no driving)

### **"Secure-disk" mode**

You can divide the player's storage disk into two separate disks and encode one of them to be hidden.

### **Recording / repeating**

You can record voice with microphone and store it in format WMA and ACT; moreover, you can set repeating sections.

### **7 EQ modes**

Normal, rock, pop, classic, soft, jazz, DBB

### **7 color backlights**

Select from seven different color backlights.

### **Set power off time**

Two convenient modes: sleeping mode and power saving mode

### **All flash menu**

Menu with word display gives you important feedback.

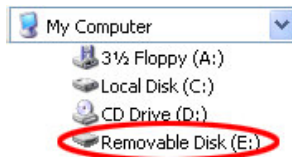
### **Upgradeable hardware**

Upgrade the player's reprogrammable memory with new drivers (Please check the Kaser website for latest driver releases.)

## Quick Start Guide

### Loading your MP3 Player

- 1) If you are using Windows 2000 or Windows 98 SE or Windows ME, please insert the Driver CD into your computer's CD drive and run the installation application. If you are using Windows XP, proceed to Step 2 as no driver installation is required.
- 2) Connect the Mambo to small end of the USB cable included in the package.
- 3) Connect the other end of the USB cable to your computer.
- 4) The MP3 player will automatically appear as a new Removable Disk.



- 5) Copy your music files to the Removable Disk icon as you normally copy any files on your computer.

### Disconnecting your MP3 Player

- 1) Right-click the Remove Hardware icon in the System Tray (next to the clock) and select Safely Remove Hardware.

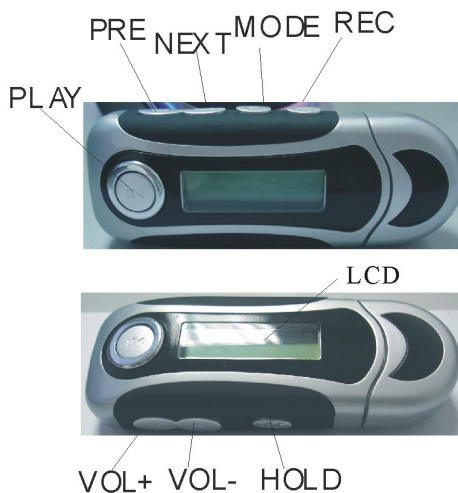


- 2) In the Remove Hardware dialog, click on the appropriate USB drive or mass storage device and click Stop.
- 3) In the resulting dialog, click OK to confirm your selection. Click Close to close the Remove Hardware dialog.



# Quick Reference Guide

## Buttons



## Button Summary

**Play:** Power on or off / play/ pause/ stop

**Mode:** Enter the menu or escape to the previous menu

**VOL+, VOL-:** Increase or decrease volume.

**Next:** select the next item

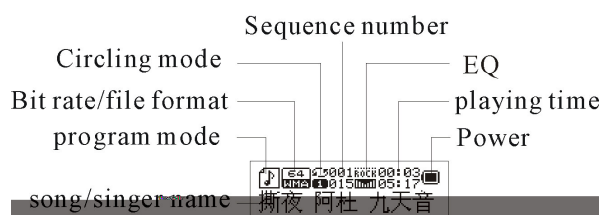
**Prev:** select the previous item

**REC:** Enter the recording mode

Power on / off

Press and hold "Play" button to power on or power off

## LCD Display – music mode



## Power Display

The player shows a 9-level power indicator. It will show full power if the battery is 1.5V. The indicator will decrease over time as the battery is depleted. The indicator will be empty if the battery's charge is used up.

## Main menu

You can enter a menu by pressing the "Mode" (M) button. Each menu has further submenus that allow you to perform various operations (play music, record, change system setting, etc).



To escape to the Main menu from any submenu, press and hold the Mode button.

## Submenus

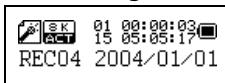
### Music mode



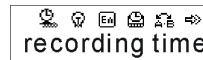
### FM mode



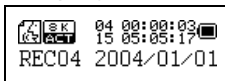
### Recording mode



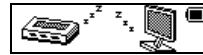
### System setting



### Playing mode



### USB mode (connecting with PC)



## Play Button functions

The Play button can play or stop (it can pause when recording).

In the System, Phone Book and Text submenus, pressing the play button takes you up to the Main menu.

In music mode, press "Play" to play music. When playing, quickly press "Play" to pause playing. Pressing "Play" and holding it slightly longer will stop playback.

In recording mode, press "Play" to record music. When playing, quickly press "Play" to pause the recording. Pressing "Play" and holding it slightly longer will stop the recording and save the file.

## Button Actions Note

Button functions can vary with the length of time that the button is held. There are regular presses, short or quick presses like clicking a mouse button, and presses where you hold the button until the desired action occurs.

## Player Functions

### Music Playback

- 1) Select the Music mode menu and press the "Mode" button.
- 2) To play the selected file, press the "Play" button.
- 3) To browse other files, press the "Prev" or "Next" buttons. If a file is already playing, pressing "Prev" or "Next" will start the next music file. However, pressing and holding these buttons will fast forward or reverse.
- 4) When playing, quickly press "Play" to pause playing. Pressing "Play" and holding it slightly longer will stop playback.
- 5) To add more music to your MP3, connect the player to your computer with a USB cable. The player will appear as a removable disk icon. Copy and delete files as normally done with USB disks or floppy disks.

If using Windows 98, please install the USB driver from the driver CD. This driver is not needed for Windows 2000/XP users.

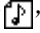

### Lyrics Display

This player supports simultaneous lyric display using the .LRC text format. To use this feature, keep the song word name consistent with the music.

For example:

Name of the music: My\_Song.mp3

Name of the song word: My\_Song.lrc

If your music file has a matching lyric file, the music mode "" will become "".

- 1) Play a music file with a lyric file.
- 2) Press "Mode" and hold until the lyrics are displayed.
- 3) Press "Mode" to turn off the lyrics display.






## Playing Mode submenu

You can choose different playing mode while playing music or music files such as repeating and shuffling, or set Equalizer settings, or playback tempo.


### Repeat

- 1) Start the Music mode and play a music file.
- 2) Press "Mode" to open the Playing Mode submenu.
- 3) Press "Mode" to open the Repeat submenu. From here you can select the following options


#### ○ REPEAT

 (Normal)	Play songs in normal mode.
 (Repeat One)	Repeat one song
 (Folder)	Play all songs in a folder/directory
 (Repeat Folder)	Play and repeat all songs in folder/directory
 (Repeat All)	Play and repeat all the songs

#### ○ SHUFFLE

 (Random)	Play the songs in random order
--------------------------------------------------------------------------------------------	--------------------------------

#### ○ INTRO

 (Intro)	Play the first 10 seconds of all songs in order.
---------------------------------------------------------------------------------------------	--------------------------------------------------

### Equalizer

- 1) Play a music file
- 2) Press "Mode" to enter Playing Mode submenu.
- 3) Press "Next" to highlight the Equalizer item and press "Mode."




- 4) Press "Next" to select from Natural/Normal, Rock, Pop, Classical, Soft, Jazz and DBB.
- 5) Press "Mode" to confirm your selection.

### Tempo

- 1) Play a music file
- 2) Press "Mode" to enter Playing Mode submenu.
- 3) Press "Next" to highlight the Tempo item and press "Mode."
- 4) Press "Prev" or "Next" to adjust the Tempo slider.
- 5) Press "Mode" to confirm your selection.

### **Replay (A-B)**

This function lets you set and repeat a particular section of a music file or recording.

- 1) Play a music file
- 2) Press "Mode" to enter Playing Mode submenu.
- 3) Press "Next" to highlight the Replay item and press "Mode."
- 4) The display will Music mode and the A in the A-B icon (  ) will be flashing.
- 5) Press "Next" to set the start point of the repeating section.
- 6) The B in the A-B icon will start flashing.
- 7) Press "Next" to set the end point of the repeating section.
- 8) The section will be repeated the number of times specified in the Replay Times setting.
- 9) After repeating the section, normal play will continue.
- 10) Use the Volume buttons to adjust the playback tempo of an A-B section.

### **Replay Time**

Use this slider to set the number of times an A-B section replays.

### **Replay Gap**

Use this slider to set amount of pause between repeating playback.



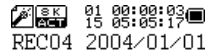
## Voice Recording

The player supports storing 99 text files in each directory. Please make sure the power is enough when recording.

- 1) Select the Recording mode from the Main menu



- 2) Press "Mode" to enter the Recording mode.



- 3) Press "Play" to start recording.

You can also "hot record" without using this menu by pressing "Rec" in any mode.



The recorded voice file is stored in the current directory selected in "voice recording" submenu.



If the screen displays "no space," there is not enough disk space for storing the recording. Some files may need to be deleted in order to perform further recordings.



If the screen displays "full," there are already 99 recordings in the current directory. Create a new directory before continuing.

### Recording Settings

From voice recording interface

- 1) From the Main menu, highlight the recording mode and, press "Mode" to enter Recording mode
- 2) Press "Mode" again to enter the Recording submenu.
- 3) Press "Next" to highlight the Recording Type submenu.
- 4) Press "Mode" to enter the Recording Type submenu.



- 5) Press "Next" to choose the recording type, and then shortly press "Mode" to confirm the selection.

Recording types:



High quality recording; WAV format, good sound quality



Long time recording; ACT format, ordinary sound quality



High quality sound control; WAV format, (sound control recording, and it will pause when there is no sound input)



Long time sound controlling ACT format, (sound control recording, and it will pause when there is no sound input)

## Recording Playback

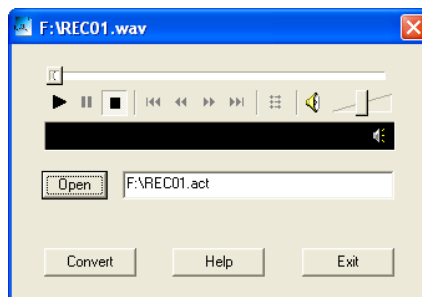
- 1) From the Main menu, highlight the recording mode, and press "Mode" to enter Recording Playback mode.
- 2) To play the selected file, press the "Play" button.
- 3) To browse other files, press the "Prev" or "Next" buttons. If a file is already playing, pressing "Prev" or "Next" will start the next recording. However, pressing and holding these buttons will fast forward or reverse.
- 4) When playing, quickly press "Play" to pause playing. Pressing "Play" and holding it slightly longer will stop playback.

## Convert ACT recording into WAV format

An ACT formatted recording can be converted to WAV format using the Sound Convert software included with the player.

- 1) Insert the driver CD into your computer, navigate to the MP3 Player Utilities directory and select MSIen.msi, which is the English language installer file. Double-click the file to start the installer.
- 2) After installation, connect your player to your computer using a USB cable.
- 3) From the Start menu, select MP3 Player Utilities > Sound Convert.
- 4) Click Open to select the ACT file.
- 5) Use the directory dialog to select your file and click Open.
- 6) Click Convert to convert your file. The file is automatically converted.

**Note:** The file created will have the same filename as the selected ACT file. You should rename files appropriately to avoid accidental deletion of other files.



## Use FM radio

From the Main menu, highlight the FM mode, and press "Mode" to enter FM mode.



### Automatically Seeking

Press "Prev"/"Next" for two seconds and the player seeks forward or downward in 100KHz increments, and stops at the next station. To stop seeking, press "Prev" or "Next."

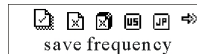
### Micro adjustment

Press "Prev" to decrease the frequency a single step (100KHz) backward

Press "Next" to increase the frequency a single step (100KHz) forward

### Store stations

- 1) Press "Mode" to enter the submenu of FM mode.



- 2) Press "Mode" again to store it



: "Normal frequency" and "Japanese frequency" can each store at most 20 stations.

### Listen to stored station

If there is at least 1 station stored, "Play" to listen them in sequence.

## System settings

From the Main menu, highlight the System mode and, press "Mode" to enter System Settings mode.



Available settings and descriptions

Recording time	Set the recorded date and time when the recording text recorded
Language	Set different languages
Power off setting	Set a time of counting back, and once reached the time it will power off automatically
Repeat setting	Set the working condition of recording process
Contrasting adjustment	Set the contrasting rate of the screen
Connecting mode	The item of "different space" function
Storage condition	Check the storage space
Hardware edition	Display the player's hardware edition
Hardware upgrading	Specially for hardware upgrading
Exit	Exit the present interface



Hint: after confirming a setting change a setting by pressing "Mode," press the "Play" button to exit to the previous menu.

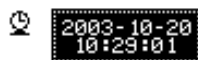
### Recording Time

Sets the time on the player.

- 1) Enter the System Setting menu from the Main menu.



- 2) Select Recording Time and press "Mode" to enter the clock control.



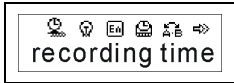
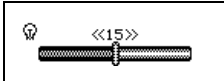
- 3) Shortly press "Play" to set the time from "year", when you start setting, the "year" will start flashing. Press "Next" to increase and "Prev" to decrease.
- 4) Press "Mode" to exit

## Backlight Time

- 1) Enter the System Setting menu from the Main menu.
- 2) Select Backlight Time and press "Mode" to enter the slider control.



- 3) Press "Next" to increase and "Prev" to decrease the backlight time.
- 4) Press "Mode" to exit

<p>1. System setting interface</p> 	<p>2. Pluck NEXT to choose "backlight time"</p> <p>Year is long:</p>
<p>3. Press MODE to enter backlight time interface</p> <p>Backlight time:</p> 	<p>4. Pluck Next/Last to adjust time</p> <p>5. Press MODE to exit after adjusting</p>

## Backlight Mode

Sets the color of the backlight

- 1) Enter the System Setting menu from the Main menu.
- 2) Select Backlight Mode and press "Mode" to enter the slider control.
- 3) Settings 1-6 are single color mode; the backlight is always the same color.
- 4) Setting 7 is multi-color mode; the backlight cycles through 7 colors.
- 5) Press "Mode" to exit

## Language

Sets the language used in the display.

## Power Off

Sets battery saving functions

- 1) Enter the System Setting menu from the Main menu.
- 2) Select Power Off and press "Mode" to enter the submenu.
- 3) Press "Prev" or "Next" to select Off Time or Sleep Time.
- 4) The Off slider sets the time the player powers off after inactivity. This setting turns off the player and its value is always stored.
- 5) The Sleep slider sets the time the player sleeps. It is similar to the Off setting except that the sleeping mode is set for one time, and resets itself after powering off. After power off, it needs to be set again.

**Replay**

Sets the replay mode to manual or automatic.

**Contrast**

The contrast slider sets the LCD contrast.

**Online mode**

Sets the drive mode when connected to a PC.

Note: If the computer's operating system is older than Windows 2000 SP4 (for example, Windows 98) and the player's storage disk has more than one partition using the "different space" function, Normal or Encrypted must be selected in order for the disk to mount. Older operating systems cannot mount a player with more than one partition.

**Memory Info**

Displays the percentage of memory used in the player.

**Firmware Version**

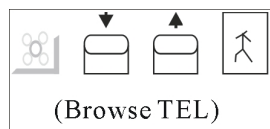
Displays the version number of the player's firmware

**Firmware Upgrade**

Used for the upgrading hardware

## Phonebook

- 1) From the Main menu, highlight the recording mode, and press "Mode" to enter Phonebook mode.

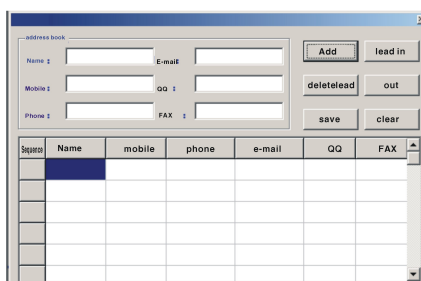


- 2) To view the selected contact, press the "Play" button. Press the "Prev" or "Next" buttons to scroll through the information.
- 3) To browse to other contacts, press the "Prev" or "Next" buttons.
- 4) Press and hold the "Mode" button to exit to the Main menu.

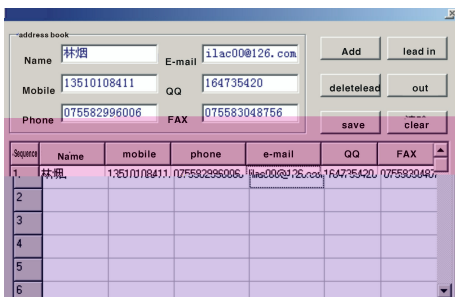
## Creating a phonebook

Phonebook contacts can be imported with the use of a computer. You can create a file to import using the Telephone utility included on your driver CD. The contact information has fields for name, phone, mobile, e-mail, fax and QQ.

- 1) Insert the driver CD into your computer, navigate to the Telephone directory and select tel\_en.exe. Copy this file to your computer's hard disk.
- 2) Launch the application by double-clicking its icon.



- 3) Enter the information in the appropriate fields at the top.
- 4) Click Add to save the information. The dialog will be updated with the new information.
- 5) To add another contact, enter the new information in the fields at the top and repeat the process.



- 6) To delete a record, select the name field of the record and press delete.
- 7) To modify a record, select the name field of the record and modify the information in the fields at the top. Click Add to save your changes.
- 8) To export the list as a text file for use in other programs, click Export.



The file is automatically saved as TeleBook.txt. To avoid accidental deletion of data, please make a backup and rename the file beforehand.

- 9) To import a list from your player, click Import and select the desired .BIN file.
- 10) To save a file for importing to your player, click Save. The file is automatically named TeleBook.bin.



The file is automatically saved as TeleBook.bin. To avoid accidental deletion of data, please make a backup and rename the file beforehand.

### **Importing a Phonebook**

- 1) Connect the player to your computer using a USB cable. The player appears as removable disk.
- 2) Copy the TeleBook.bin file to the player.
- 3) Click the Safely Remove Hardware icon in the Window menu bar and click to remove the player. Finally, disconnect the player from the USB cable.
- 4) Power on the player.
- 5) From the Main menu, select the Phonebook mode and press "Mode."
- 6) Press "Next" to scroll to Import Tel
- 7) Press "Next" to select Yes and then press "Mode" to import TeleBook.bin.

### **Exporting a Phonebook**

- 1) From the Main menu, select the Phonebook mode and press "Mode."
- 2) Press "Next" to scroll to Export Tel
- 3) Press "Next" to select Yes and then press "Mode" to export TeleSave.bin.
- 4) Connect the player to your computer using a USB cable. The player appears as removable disk.
- 5) Import and modify TeleSave.bin using the steps in the Creating a Phonebook instructions above.



## **Text Reading**

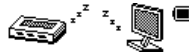
- 1) From the Main menu, select Text, and press "Mode" to enter the Text submenu.
- 2) Dir Select: Choose the directory. The player supports the root level and one folder level. The player recognizes up to 9 folders, but does not recognize folders nested within other folders. If the file is in the root level of the player's disk, you do not need to do this step.
- 3) File Select: Browse the files with the "Next" button and select the current file by pressing "Mode."
- 4) Select File Read and press "Mode" to view the file selected in Step 3.
- 5) Press "Next" or "Prev" to browse the file.

## USB Mode

The player is the standard USB disk that supports Windows 2000/XP, Mac OS 10.3 or above, Linux Redhat 8.0 or above. Windows 98 is also supported but requires driver installation. The player supports the Suspend mode.

The player displays the following icons after connecting PC:

1. Waiting



2. Downloading



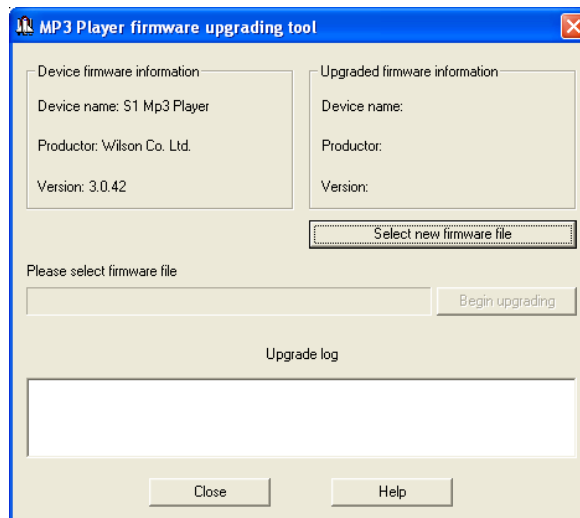
3. Uploading



Last, if the player has a battery, the player can use the USB to supply power. Press "MODE" to exit Waiting mode. The Main menu will be displayed and you will be able to choose from the other modes.

## Firmware Upgrading

- 1) From the Main menu, select System Settings, and press "Mode" to enter the System submenu.
- 2) Press "Next" to scroll to Firmware Upgrade, and press "Mode."
- 3) Connect the player to your computer using a USB cable.
- 4) Insert the driver CD into your computer, navigate to the MP3 Player Utilities directory and select MSIen.msi, which is the English language installer file. Double-click the file to start the installer.
- 5) From the Start menu, select MP3 Player Utilities > MP3 Player Update Tool.



- 6) Click Select new firmware file and use the directory dialog box to select the new firmware. Check for updates at <http://www.kasercorp.com>.
- 7) Click Begin upgrading to upload the new firmware.
- 8) The player will display this icon after upgrading:



Firmware upgrades can improve the function of player. However, it will not affect the normal running of player if you don't use the hardware upgrading. Upgrades should be performed by knowledgeable computer users. If improperly applied, firmware upgrades can make your player unuseable. Please use only firmware upgrades made for your player.

## **Other settings**

### **Organizing your files**

You can place different files into different directories in order to play and manage the files selectively. The player supports the root level and one folder level. The player recognizes up to 9 folders, but does not recognize folders nested within other folders. To create a directory structure, connect the player

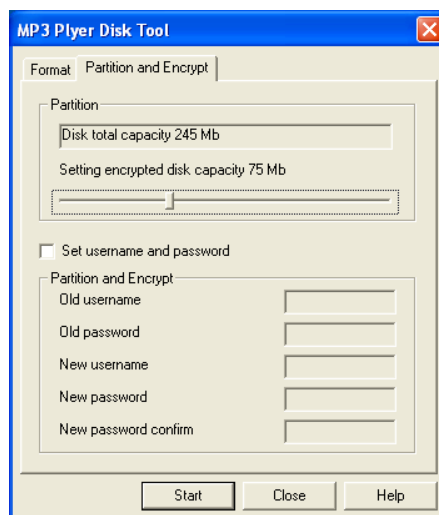
## Encrypted Disk

This player includes software on the Driver CD to partition its disk space into two drives – one drive for MP3 files and a second drive that is encrypted to keep any data private. It is only available to users with Windows 2000 Service Pack 4 or later (including Windows XP).

Windows 98 and other operating system users can only access one of the two partitions. In order to use the encrypted disk feature with these other operating systems, the disk must be formatted as a single disk or a single encrypted disk.

### Create the Encrypted Disk

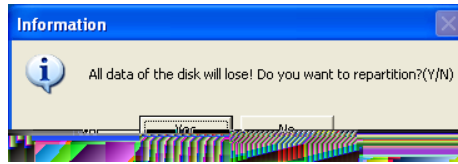
- 1) Insert the driver CD into your computer, navigate to the MP3 Player Utilities directory and select MSIen.msi, which is the English language installer file. Double-click the file to start the installer.
- 2) After installation, connect your player to your computer using a USB cable.
- 3) If you already have music and data stored on the player, save a copy to your computer. This procedure erases the MP3 player disk and any music or files stored on it will be deleted.
- 4) From the Start menu, select MP3 Player Utilities > MP3 Player Disk Tool
- 5) Click on the Partition and Encrypt tab.



- 6) Click Set username and password and enter them in the fields.

Store your name and password in a safe place. If you lose this information, you will not be able to read and copy files to the encrypted disk. Furthermore, you may have to repeat this procedure to create a new blank encrypted disk.

- 7) Click Start.
- 8) Click Yes to confirm that you wish to partition the disk. Please note that any music or data on the MP3 player will be deleted. (see Step 3).



- 9) After the partitioning process, restart the computer. After restarting, there will be two removable disk icons – one for each partition.

### **Using the Encrypted disk**

- 1) The encrypted disk contains an application RdiskDecrypt. To read or copy files to le th8;z:XEYcICD8;Eonit

## Troubleshooting

No power	Check whether the battery installed properly and has a charge.
No sound in the earphone	Make sure the volume is not under 0 and the earphone connecting. Make sure the earphone is clean. A corrupted MP3 may not play.
Unusual LCD screen text	Make sure that you choose the right language.
Cannot download the music normally	Check whether the USB connection is correct Whether the driver installation is correct (Win98). Check whether there is enough free memory.

## Technical Specifications

Size		
Weight		
Screen	Matrix graphic screen (132*32) 7-color backlight	
Computer connection	High-speed USB 2.0 (FS) flash disk	
Build-in memory	32-1G	
Supply power	The longest playing time is 10 hours	
REC	Sample ratio	8KHz
	Recording format	WAV (32K bps)、ACT (8K bps)
	Recording time	35hours (ACT, 128M Flash)
MP3、WMA、WMV、ASF	The biggest outputting ratio	(L) 10mW+ (R) 10mW (32Ohm)
	MP3 bit rate	8K bps – 320K bps
	WMA、WMV、ASF bit rate	5K bps – 384K bps
	Frequency corresponding	20Hz 至 20KHz
	SNR	85dB
	Lack fidelity	<+_0.05
FM radio	Frequency scope	76 MHz-90MHz/87MHz-108MHz
	Radio stations	20+20
	The biggest output rate of earphone	(L) 10mW +(R) 10mW (320)
	SNR	45dB
Music format	<b>MP1、MP2、MP3、WMA、WMV、ASF、WAV</b>	
Temperature	-5 to 40 degree centigrade	
Multi languages	Traditional Chinese, English, simple Chinese, German, French, Italian and Spanish etc	
Operation system	Windows98/SE/ME/2K/XP、Mac OS 10、Linux 2.4.2	

Specifications are subject to change without notice.



## Free Manuals Download Website

<http://myh66.com>

<http://usermanuals.us>

<http://www.somanuals.com>

<http://www.4manuals.cc>

<http://www.manual-lib.com>

<http://www.404manual.com>

<http://www.luxmanual.com>

<http://aubethermostatmanual.com>

Golf course search by state

<http://golfingnear.com>

Email search by domain

<http://emailbydomain.com>

Auto manuals search

<http://auto.somanuals.com>

TV manuals search

<http://tv.somanuals.com>