

Matchprint

Professional Server

for Xerox DocuColor 12 Printer/Copier

v3.0 Installation Instructions

Dell Precision 650

Part number - KY0730482

Kodak Polychrome
G R A P H I C S

©2003 Kodak Polychrome Graphics. All rights reserved.

Matchprint is a trademark of Kodak Polychrome Graphics. Kodak is a trademark of Eastman Kodak Company. All trademarks and registered trademarks used herein are the property of their respective owners.

January 2003. Revision B. Matchprint Professional Server Iix v3.0.

Table of Contents

Save Your Current Settings	4
Remove Previous Version of Software	6
Installing the Software.....	9
Restore Saved Configuration.....	14

Save Your Current Settings

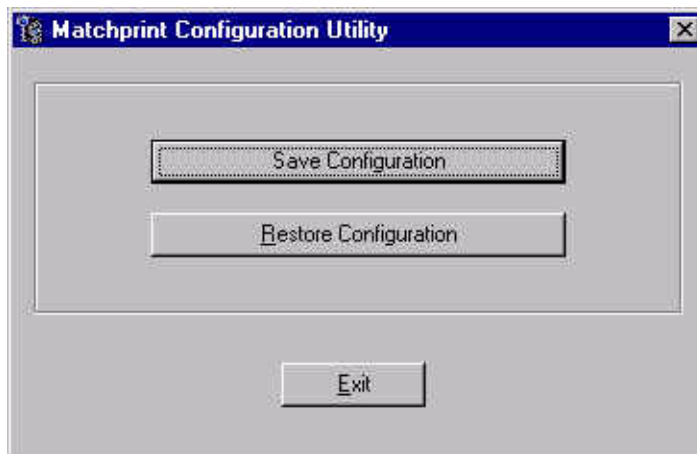
The **Save Matchprint Configuration** utility is a simple backup to disk procedure designed to protect your RIP configuration setup in the event that software needs to be reloaded.

Once you've configured hot folders, spoolers, printers, preferences and color target adjustments, perform the following **Save Configuration** Procedure. In the event you need to reload software, you can re-establish these configurations by performing the **Restore Configuration** procedure.

Note: When un-installing the software via Add/Remove Programs, you will also be given a list of items that can be saved to another folder. There is some duplication between the Save/Restore Configuration feature and the items saved when removing the software. We recommend using both methods to ensure complete recovery after re-installing the software.

Save Configuration Procedure

1. To access the **Save Matchprint Configuration** utility, go to **Start > Programs > Kodak Polychrome Graphics > Save Matchprint Configuration**. The following dialog appears:



2. Click on **Save Configuration**.



3. Insert a disk into drive A as instructed and press **OK**. After the configuration is saved to the disk, the following verification dialog appears.



4. Click **OK**, then label and store the disk in a convenient place.

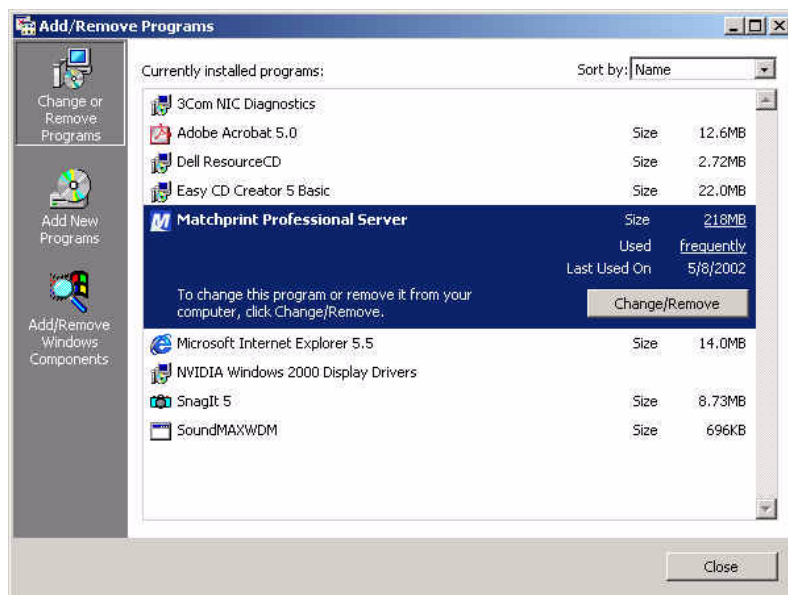
Go to "Remove Previous Version of Software" to continue with the installation process.

Remove Previous Version of Software

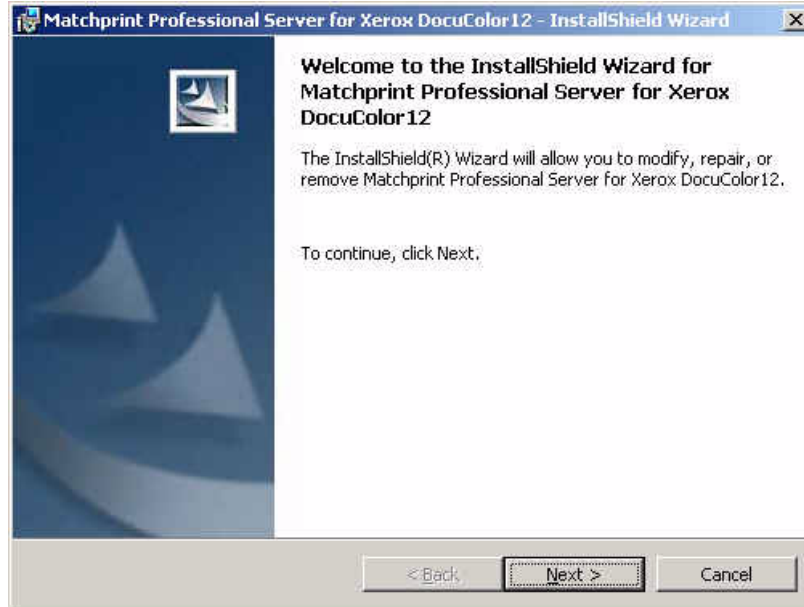
If you have not already done so, go to Save Your Current Settings for instructions on preserving current settings. Otherwise, continue with the following procedure.

Existing versions of the software must be removed prior to installing the new software or reinstalling current software. Remove and install your software as shown in the following procedures:

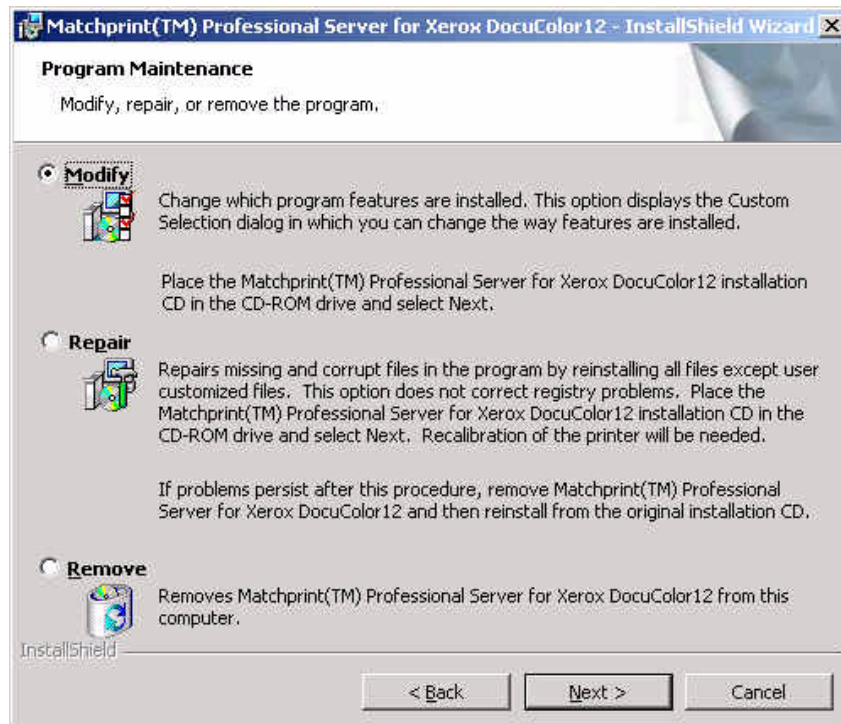
1. Log on as the system administrator to un-install the software.
2. Close all applications including the Matchprint Professional Server software prior to starting the installation.
3. Go to **Start > Settings > Control Panel > Add/Remove Programs**. At the following screen, select **Matchprint Professional Server** from the list, then click **Change/Remove**.



4. At the Welcome window, click **Next>**.



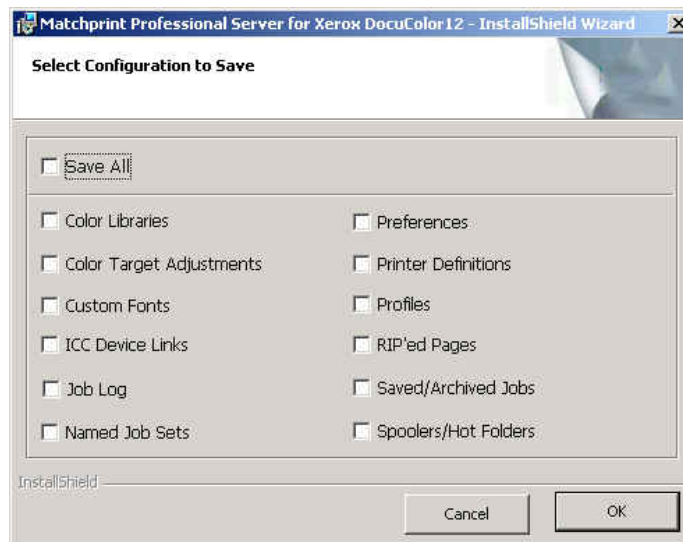
5. At the Program Maintenance Screen, select the **Remove** option and then click **Next**.



Remove allows the user to select the areas they wish to restore after the new software is installed (or reinstalled). Saved configurations are located in `c:\Program Files\Kodak Polychrome Graphics\MPS Old Config timestamp, such as 07-25-2002 11-59`. If you click **Remove**, the following screen displays. Select the items you wish to save, then click **OK** to continue.

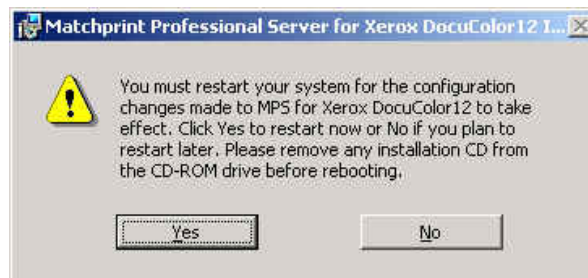
For a detailed list of file types and save locations, go to the "Restore Saved Configuration" topic.

Note: There is some duplication between the Save/Restore Configuration feature and this un-installation procedure. We recommend using both methods to ensure complete recovery after re-installing the software.



Remove All removes all customized settings and files created by this product. All settings must be re-entered after software installation. If this option is selected, all customized settings will need to be re-entered at the end of software installation. If you do not have this information recorded, click on **Cancel** now and record your settings. Then restart this procedure.

6. Click on the **Remove All** or **Remove** button. The **InstallShield Wizard Completed** screen displays when the un-installation is complete.
7. Click **Finish** to exit the Wizard.



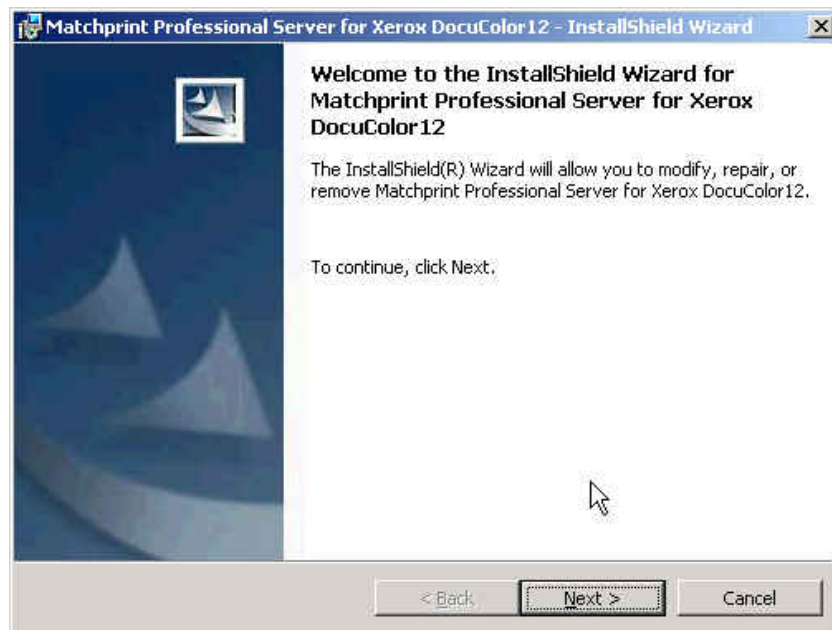
Installing the Software

1. Log on as the system administrator to install the software.
2. Close all applications prior to starting the installation.
3. Insert the installation CD-ROM into the drive. If the installer launches automatically, go to step 5.
4. Select **Run** from the **Start** menu. The Run window displays. Enter your CD-ROM drive letter, then enter: **setup.exe**

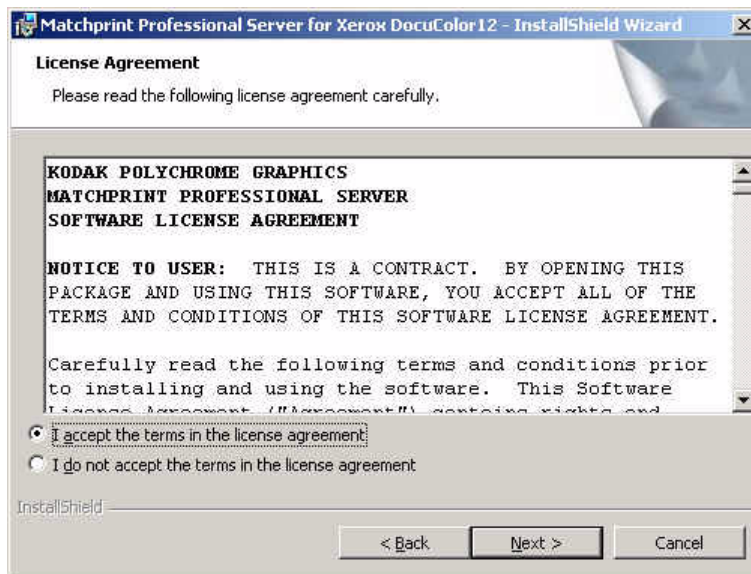
- OR -

Double-click **Setup.exe** file from the Explorer window.

The Welcome window displays. Click **Next**.



5. Read the license, then select "**I accept the terms of the license agreement.**" Click on **Next** to continue. The Custom Setup screen displays:



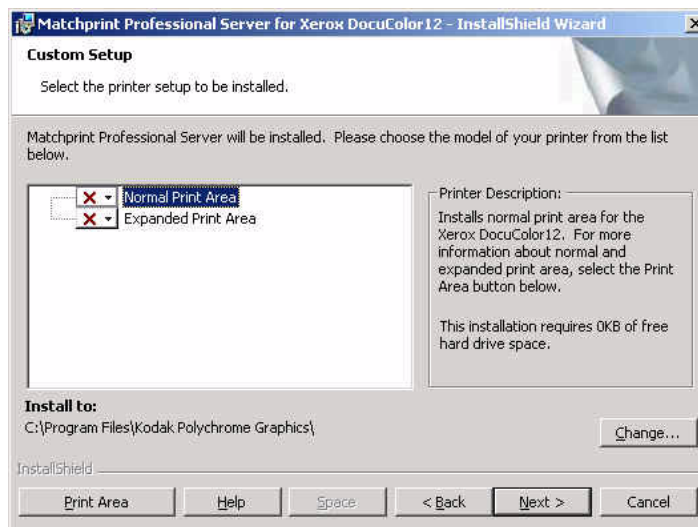
6. Use the drop-down arrow to select either a **Normal** or **Expanded Area** installation. Make the appropriate selection, then click **Next**.

Print Area contains information on Enabling the Expanded Print Area if you have that feature on your Doc12.

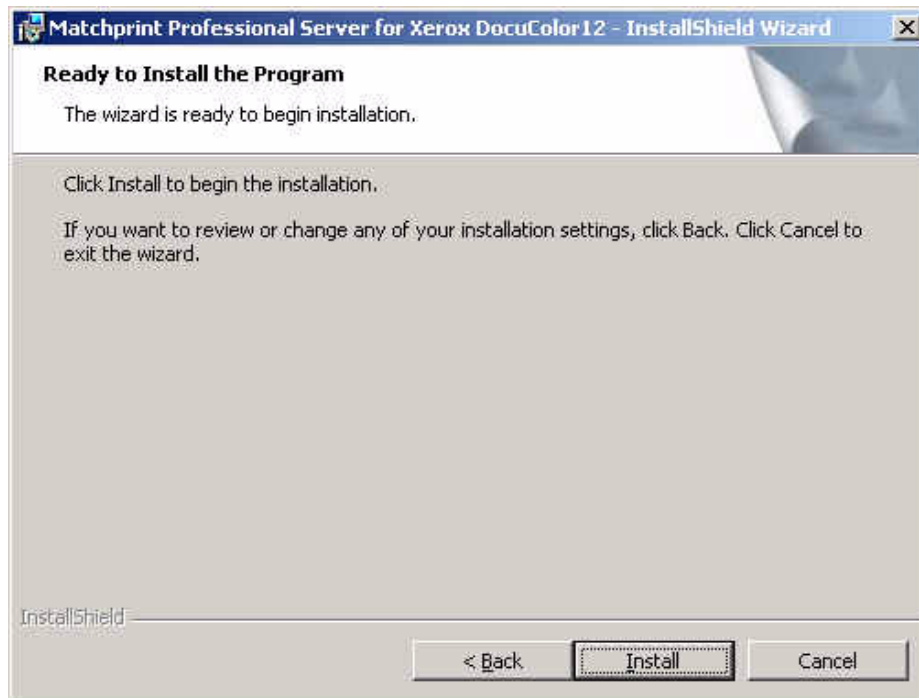
Help contains information on the drop-down list selections available on this screen.

Space displays the currently available and required hard drive space you have on the server.

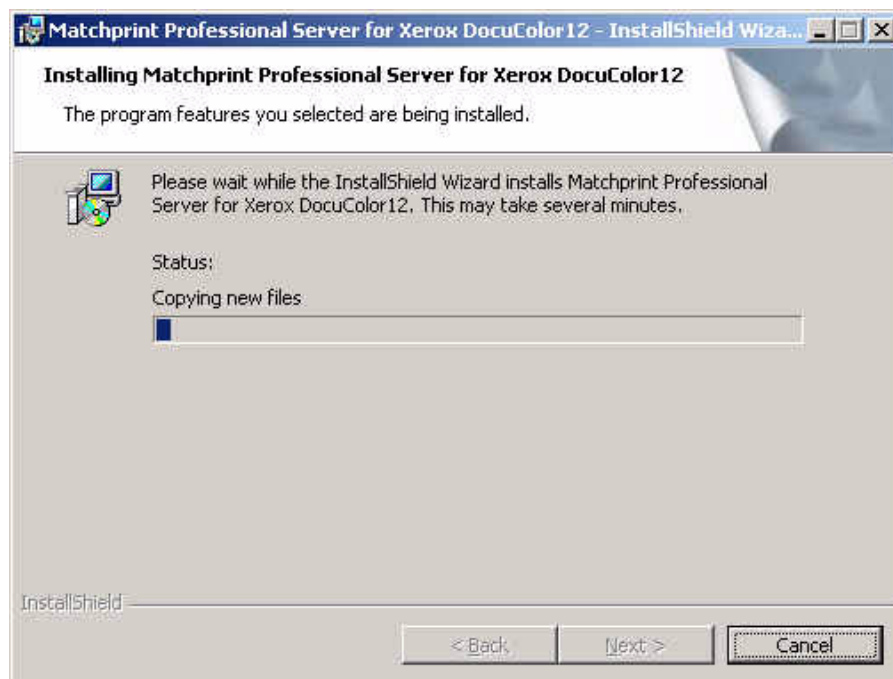
Change allows you to select a different location to install the application.



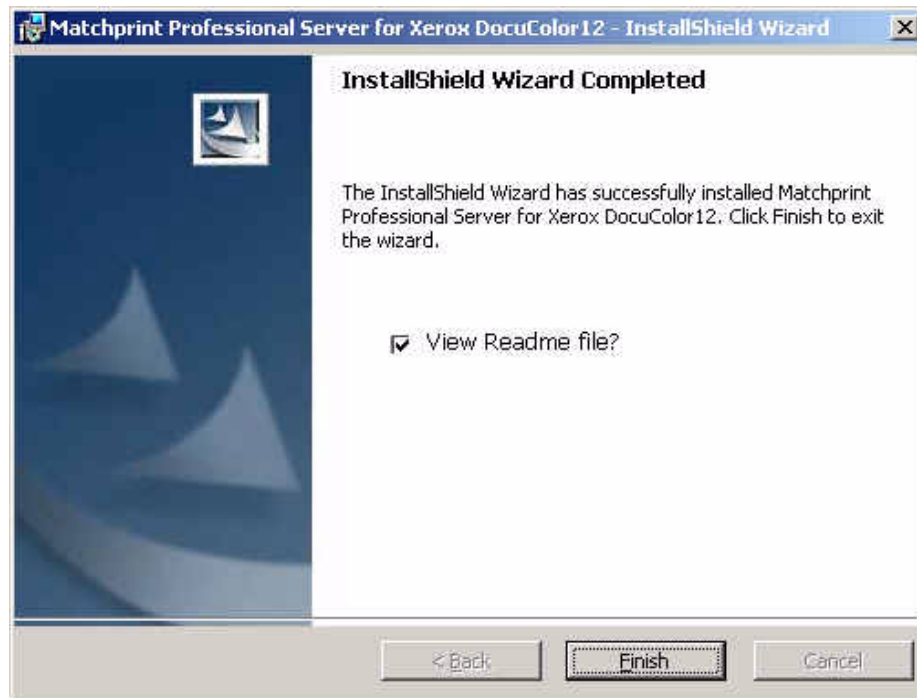
5. At the **Ready to Install...** window, click **Install**.



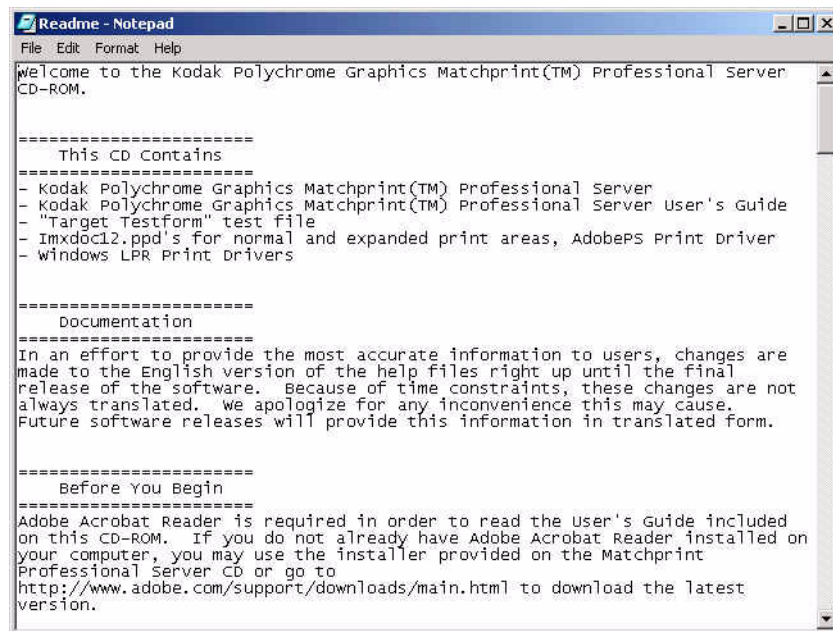
A progress bar displays:



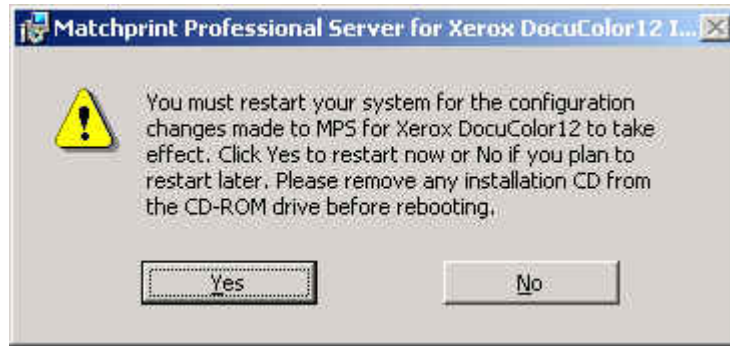
9. At the InstallShield Wizard Completed screen, Click on **Finish** to see the **Readme** file now. The Readme file contains important notes about program operation we were unable to get into the user documentation prior to the release of the software.



10. Read the notes, then close this window.



11. The restart screen displays. Remove the installation CD-ROM from the drive, then click **Yes** to restart the server.

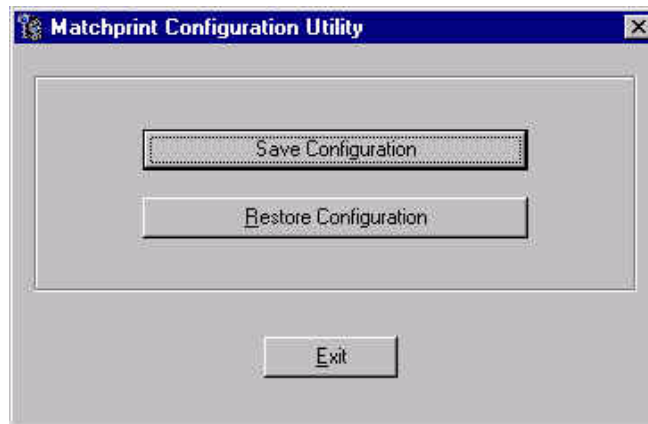


12. If you saved your configuration parameters before installation and would now like to restore them, go to "Restore Saved Configuration" for instructions.

Restore Saved Configuration

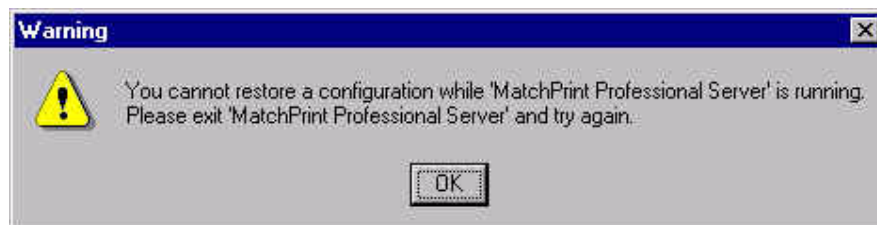
Note: You must exit the **Matchprint Professional Server** software prior to restoring the RIP configurations.

1. Go to **Start > Programs > Kodak Polychrome Graphics > Save Matchprint Configuration**. The following dialog appears:

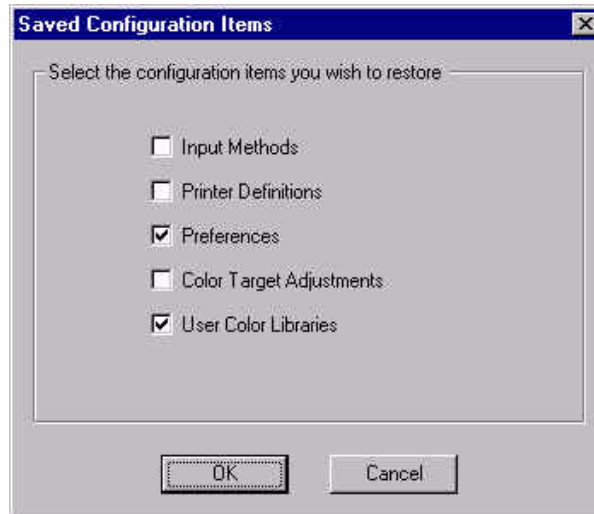


2. Click on **Restore Configuration**.

If the **Matchprint Professional Server** is still running, the following message appears. Exit the software and resume this procedure.



3. Select which items you wish to restore from the following dialog, then click **OK**.



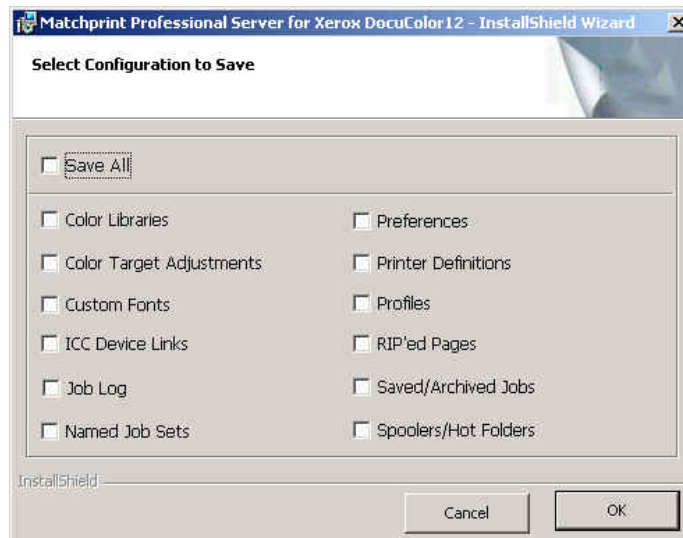
4. When the configuration is restored, the following verification dialog appears:



5. Click OK.

Restoring Saved Files from Un-Installation of Matchprint Professional Server

When un-installing the software, you were given the option to save selected items from the following window:



1. These files are saved to **c:\Program Files\Kodak Polychrome Graphics\MPS Old Config** *date timestamp*, such as 7-24-2002 11-59. Use the following table to identify file types, names and specific locations.

2. Select the individual **files** you wish to restore and move them back into the **c:\program files\Kodak Polychrome Graphics** location under the corresponding folders.

Important! Do not restore entire folders. Only restore selected files.

File Type (File Name)	Saved Location	Move back to this Location and Notes
Color Libraries	c:\program files\Kodak Polychrome Graphics\MPS Old Config (<i>date timestamp</i>)\Color\Libraries	c:\program files\Kodak Polychrome Graphics\Color\Libraries
Color Target Adjustments	c:\program files\Kodak Polychrome Graphics\MPS Old Config (<i>date timestamp</i>)\Color\ColorTargetAdjustments	c:\program files\Kodak Polychrome Graphics\Color\ColorTargetAdjustments
Custom Fonts	Custom fonts saves user added fonts only in c:\program files\Kodak Polychrome Graphics\MPS Old Config (<i>date timestamp</i>)\Matchprint Professional Server\Pdfs\Fonts	After v3.0 is installed, use the Roman Font Manager to add fonts to the application.
ICC Device Links	c:\program files\Kodak Polychrome Graphics\MPS Old Config (<i>date timestamp</i>)\Color\ICCDeviceLinks	c:\program files\Kodak Polychrome Graphics\Matchprint Professional Server\Color\ICCDeviceLinks
Job Log (jlog.txt)	c:\program files\Kodak Polychrome Graphics\MPS Old Config (<i>date timestamp</i>)\Matchprint Professional Server\Configuration\jlog.txt	c:\program files\Kodak Polychrome Graphics\Matchprint Professional Server\Configuration\jlog.txt Note: The jog.txt does not restore the job log. This file is saved for accounting purposes only.
Named Job Sets	c:\program files\Kodak Polychrome Graphics\MPS Old Config (<i>date timestamp</i>)\Matchprint Professional Server\Named Job Sets	c:\program files\Kodak Polychrome Graphics\Matchprint Professional Server\Named Job Sets
Preferences (MPS-Preferences)	c:\program files\Kodak Polychrome Graphics\MPS Old Config (<i>date timestamp</i>)\MPS_Preferences.reg	You need to double-click on the MPS_Preferences.reg file to execute Regedit to restore preferences in registry. Follow the screen prompts to restore. Restart the Matchprint

File Type (File Name)	Saved Location	Move back to this Location and Notes
		Professional Server application.
Printer Definitions (plist.dat)	c:\program files\Kodak Polychrome Graphics\MPS Old Config (<i>date timestamp</i>)\Matchprint Professional Server\Configuration\plist.dat	c:\program files\Kodak Polychrome Graphics\Matchprint Professional Server\Configuration\plist.dat
Profiles	c:\program files\Kodak Polychrome Graphics\MPS Old Config (<i>date timestamp</i>)\Color\Profiles\Destina tion or Source	c:\program files\Kodak Polychrome Graphics\Color\Profiles\Destina tion or Source
RIP'ed Pages	c:\program files\Kodak Polychrome Graphics\MPS Old Config (<i>date timestamp</i>)\Matchprint Professional Server\RIP'ed Pages	c:\program files\Kodak Polychrome Graphics\Matchprint Professional Server\RIP'ed Pages
Saved/Archived Jobs	c:\program files\Kodak Polychrome Graphics\MPS Old Config (<i>date timestamp</i>)\Matchprint Professional Server\Archived or Saved Jobs	c:\program files\Kodak Polychrome Graphics\Matchprint Professional Server\Archived or Saved Jobs
Spoolers/Hot Folders	c:\program files\Kodak Polychrome Graphics\MPS Old Config (<i>date timestamp</i>)\Matchprint Professional Server\Configuration\ilist.dat	c:\program files\Kodak Polychrome Graphics\Matchprint Professional Server\Configuration\ilist.dat

Free Manuals Download Website

<http://myh66.com>

<http://usermanuals.us>

<http://www.somanuals.com>

<http://www.4manuals.cc>

<http://www.manual-lib.com>

<http://www.404manual.com>

<http://www.luxmanual.com>

<http://aubethermostatmanual.com>

Golf course search by state

<http://golfingnear.com>

Email search by domain

<http://emailbydomain.com>

Auto manuals search

<http://auto.somanuals.com>

TV manuals search

<http://tv.somanuals.com>