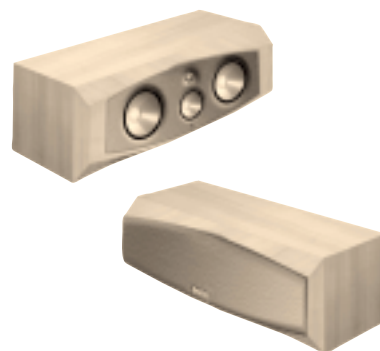




INTERLUDE™ SPEAKER SYSTEMS

Owner's Guide

- IL25c
- IL36c



Infinity Interlude Series

The Interlude series of loudspeakers continues Infinity's longstanding commitment to accurate sound reproduction. Our proprietary Ceramic Metal Matrix Diaphragm™ (C.M.M.D.) drivers, precision dividing networks and rigid, heavily braced enclosures combine to deliver uncompromised performance in any stereo or multichannel home-theater system. The IL25c and IL36c are the perfect center-channel loudspeakers to complete any home-theater system.

UNPACKING THE SPEAKERS

If you suspect damage from transit, report it immediately to your dealer. Keep the shipping carton and packing materials for future use.

PLANNING YOUR SYSTEM

Placement

For best results, the IL25c or IL36c should be placed on top of, or directly below, the television and aimed toward the listening area (see Figure 1).

The IL25c and IL36c terminal cups each have an adjustable foot to angle the speaker toward the listening position (see Figure 2).

FIGURE 1 – This overhead view shows a typical home-theater plan.

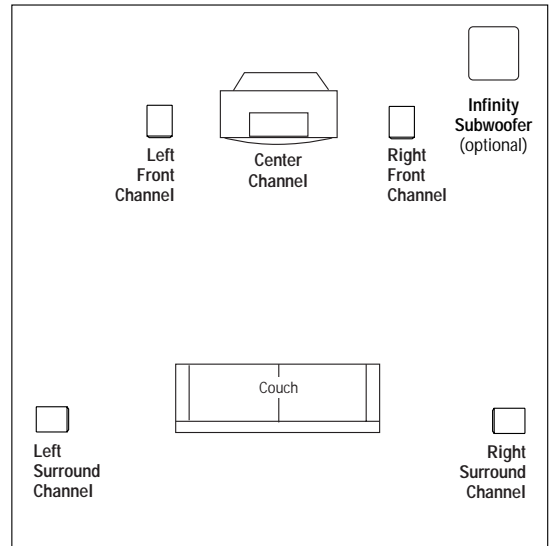
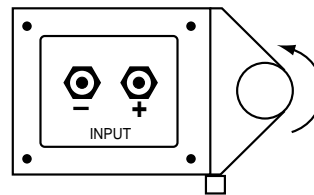
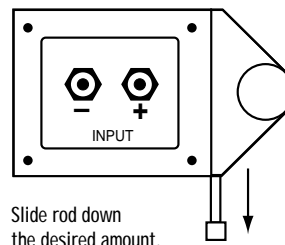


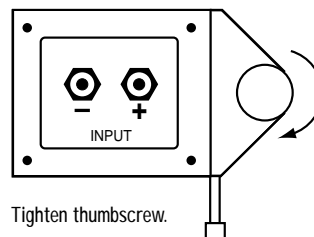
FIGURE 2



Loosen thumbscrew.



Slide rod down the desired amount.



Tighten thumbscrew.

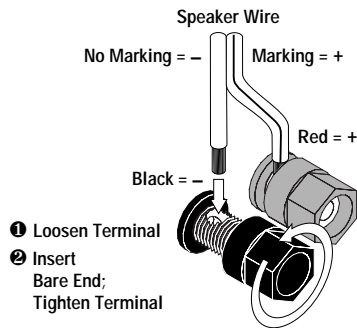
WIRING THE SYSTEM

IMPORTANT: Make sure all equipment is turned off before making any connections.

For speaker connections, use a minimum #16-gauge speaker wire with polarity coding. The side of the wire with a ridge or other coding is usually considered positive polarity (i.e., +).

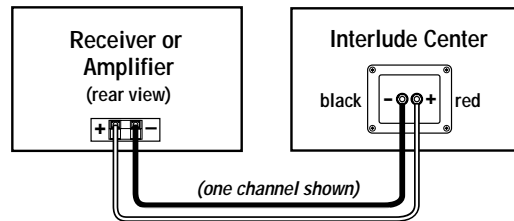
NOTE: If desired, consult your local Infinity dealer about speaker wire and connection options.

FIGURE 3 – Interlude series speakers feature color-coded terminals. This example shows the most common way of connecting speaker wire by directly inserting into terminals.



To ensure proper polarity, connect each + terminal on the back of the amplifier, receiver or television to the respective + (red) terminal on each speaker, as shown in Figure 3. Similarly, connect the - (black) terminals in the same way. Also, see the owner's guides that were included with your amplifier or receiver to confirm connection procedures.

FIGURE 4 – Wiring diagram shows polarity connections for one channel of a stereo or home-theater system.



IMPORTANT: Do not reverse polarities (i.e., + to - or - to +) when making connections. Doing so will cause poor imaging and diminished bass response.

FINAL ADJUSTMENTS

Check the speakers for playback first by setting the system volume control to a minimum level, and then by applying power to your audio system. Following the directions provided with your receiver/processor, adjust the center-channel volume so that it matches the output of the left and right speakers.

CARE OF YOUR SPEAKER SYSTEM

Each Interlude series cabinet has a wood-vinyl finish that does not require any routine maintenance. When needed, use a soft cloth, dampened with water only, to remove any fingerprints or dust.

Clean the grille by gentle vacuuming.

NOTE: Do not use any cleaning products or polishes on the cabinet or grille.

SPECIFICATIONS

	IL25c	IL36c
Frequency Range:	80Hz – 22,000Hz (± 3 dB)	55Hz – 22,000Hz (± 3 dB)
Recommended Amplifier Power Range:	15 – 150 watts	15 – 175 watts
Sensitivity: (2.83V @ 1 meter)	90dB spl	91dB spl
Nominal Impedance:	8 Ω	8 Ω
Crossover Frequency:	2200Hz; 24dB/octave	800Hz, 2500Hz; 24dB/octave
Low-Frequency Drivers:	Dual 5-1/4" (133mm) C.M.M.D., magnetically shielded	Dual 6-1/2" (165mm) C.M.M.D., magnetically shielded
Mid-Frequency Driver:	n/a	4" (102mm) C.M.M.D., magnetically shielded
High-Frequency Driver:	1" (25mm) C.M.M.D., magnetically shielded	1" (25mm) C.M.M.D., magnetically shielded
Dimensions: (H x W x D)	7-1/2" x 20-1/2" x 7-1/2" (191mm x 521mm x 191mm)	9" x 23" x 12-1/2" (229mm x 584mm x 318mm)
Weight:	20lb (9.1kg)	32lb (14.6kg)

Infinity continually strives to update and improve existing products, as well as create new ones. The specifications and construction details in this and related Infinity publications are therefore subject to change without notice.



A Harman International Company

© 1999 Infinity Systems, Inc.
250 Crossways Park Drive, Woodbury, NY 11797 USA (800) 553-3332 (USA Only)
www.infinitysystems.com

Infinity is a registered trademark of Infinity Systems, Inc.
Printed in USA 12/99 Part No. 335833-001

Declaration of Conformity

CE

We, Infinity Systems A/S
Kongevejen 194B
DK-3460 Birkerød
DENMARK

declare in own responsibility, that the products described
in this owner's manual are in compliance with technical
standards:

EN 50081-1:1992
EN 50082-1:1992

Steen Michaelson
Steen Michaelson
Infinity Systems A/S
Birkerød, DENMARK, 12/99

Free Manuals Download Website

<http://myh66.com>

<http://usermanuals.us>

<http://www.somanuals.com>

<http://www.4manuals.cc>

<http://www.manual-lib.com>

<http://www.404manual.com>

<http://www.luxmanual.com>

<http://aubethermostatmanual.com>

Golf course search by state

<http://golfingnear.com>

Email search by domain

<http://emailbydomain.com>

Auto manuals search

<http://auto.somanuals.com>

TV manuals search

<http://tv.somanuals.com>