

Dell Wyse Cloud Client

Wyse 3020

Quick Start Guide

Guida introduttiva
Guía de Inicio rápido



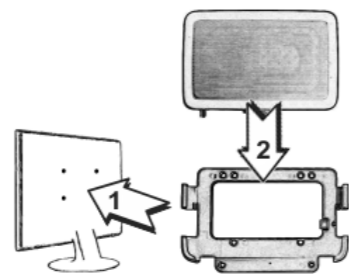
1 Install the horizontal stand

Installare il supporto orizzontale
Instale el soporte horizontal



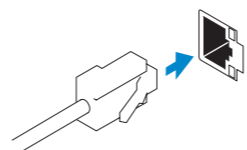
Or install the VESA mount

Oppure installare il montaggio VESA
O instale el montaje VESA

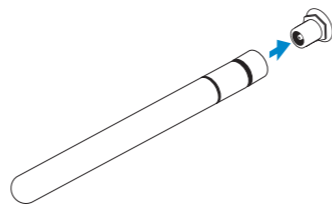


2 Connect the network

Collegare la rete
Conecte la red



Or | Oppure | O

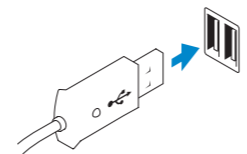


Network connector
Connettore di rete
Conector de red

Wireless antenna
Antenna wireless
Antena inalámbrica

3 Connect the keyboard and mouse

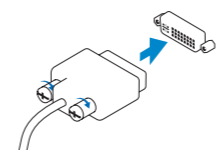
Collegare la tastiera e il mouse
Conecte el teclado y el mouse



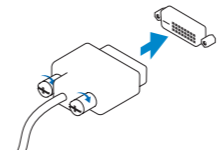
Connettore USB
Conector USB

4 Connect the display

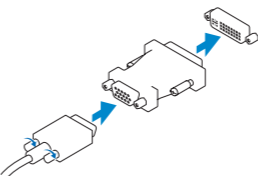
Collegare lo schermo
Conecte la pantalla



Or | Oppure | O



Or | Oppure | O



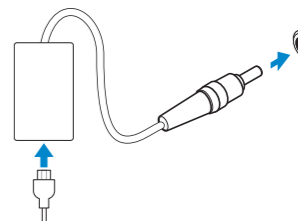
DVI-I connector
Connettore DVI-I
Conector DVI-I

DVI-D connector
Connettore DVI-D
Conector DVI-D

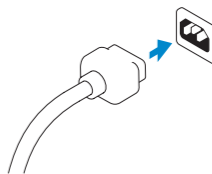
VGA adapter
Adattatore VGA
Adaptador VGA

5 Connect the power cable on your client device and display

Collegare il cavo di alimentazione del dispositivo client e dello schermo
Conecte el cable de alimentación en su dispositivo cliente y pantalla



Client device power connector
Connettore di alimentazione del dispositivo client
Conector de alimentación del dispositivo cliente



Display power connector
Connettore di alimentazione dello schermo
Conector de alimentación de la pantalla

NOTE: Your client device is ready to use when the client device activity light goes off.
N.B. Il dispositivo client è pronto all'uso quando la relativa spia di attività è spenta.
NOTA: Su dispositivo cliente estará listo para utilizarse cuando el indicador de actividad del dispositivo cliente se apague.

6 Turn on your client device and display

Accendere il dispositivo client e lo schermo
Encienda el dispositivo de cliente y la pantalla

Product support and manuals

Supporto prodotti e manuali
Manuales y soporte de productos

Contact Dell

Contatti Dell
Póngase en contacto con Dell

Regulatory and safety

Normative e sicurezza
Reglamentación y seguridad

Regulatory model

Modello normativo
Modelo reglamentario

Client device model

Modello di dispositivo client
Modelo de dispositivo cliente

dell.com/support

dell.com/support/manuals

dell.com/contactdell

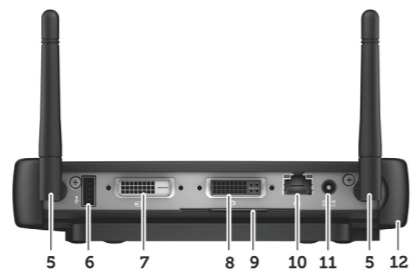
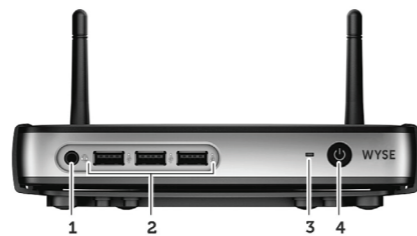
dell.com/regulatory_compliance

Tx0D

Dell Wyse Cloud Client
Wyse 3020

Features

Caratteristiche | Funciones



1. Headphone/microphone jack
2. USB 2.0 port (2x)
3. Activity light
4. Power on/off button and light
5. Wireless antenna port (optional)
6. USB 2.0 port (2x)
7. DVI-D port (1x DVI-D)
8. DVI-I port (1x DVI-D/1x VGA)

9. Product information tab
10. Network port, 10/100/1000 Base-T
11. +12V DC Power adapter input
12. Horizontal stand/VESA mount

1. Auricular/enchufe para micrófono
2. 2 puertos USB 2.0
3. Indicador de actividad
4. Botón de encendido/apagado e indicador
5. Puerto de antena inalámbrica (opcional)
6. 2 puertos USB 2.0
7. Puerto DVI-D (1x DVI-D)

8. Puerto DVI-I (1x DVI-D/1x VGA)
9. Pestaña de información del producto
10. Puerto de red, 10/100/1000 Base-T
11. Entrada del adaptador de alimentación CC de +12 V
12. Soporte horizontal/montaje VESA

1. Spinotto cuffia/microfono
2. Porta USB 2.0 (2x)
3. Spia di attività
4. Indicatore/pulsante di accensione/ spegnimento
5. Porta dell'antenna wireless (opzionale)
6. Porta USB 2.0 (2x)
7. Porta DVI-D (1x DVI-D)

8. Porta DVI-I (1x DVI-D/1x VGA)
9. Scheda informativa sul prodotto
10. Porta di rete, 10/100/1000 Base-T
11. Ingresso alimentatore c.c. +12 V
12. Supporto orizzontale/montaggio VESA



08DP09A00



Printed in Poland.
2015-04

NOTE: Components may vary based on model and location.

N.B. I componenti possono variare in base al modello e alla località.

NOTA: Puede que los componentes varíen en función del modelo y la ubicación.

Free Manuals Download Website

<http://myh66.com>

<http://usermanuals.us>

<http://www.somanuals.com>

<http://www.4manuals.cc>

<http://www.manual-lib.com>

<http://www.404manual.com>

<http://www.luxmanual.com>

<http://aubethermostatmanual.com>

Golf course search by state

<http://golfingnear.com>

Email search by domain

<http://emailbydomain.com>

Auto manuals search

<http://auto.somanuals.com>

TV manuals search

<http://tv.somanuals.com>