

**COBY Electronics Corp.**

1991 Marcus Avenue, Suite 301  
Lake Success, NY 11042

[www.cobyusa.com](http://www.cobyusa.com)  
[www.ecoby.com](http://www.ecoby.com)

850 / 852 / 854 AC

**COBY®**



**8" Widescreen Digital Photo  
Frame with Multimedia Playback**

**DP850  
DP852  
DP854**

**INSTRUCTION MANUAL**

**Please read this manual carefully before operation**

## PRECAUTIONS

	<b>CAUTION</b> WARNING: SHOCK HAZARD. DO NOT OPEN. AVIS: RISQUE DE CHOC ELECTRIQUE. NE PAS OUVRIR	
<b>CAUTION:</b> TO REDUCE THE RISK OF FIRE AND ELECTRIC SHOCK, DO NOT REMOVE THE COVER (OR BACK) OF THE UNIT. REFER SERVICING ONLY TO QUALIFIED SERVICE PERSONNEL.		



The lightning flash with arrowhead symbol within an equilateral triangle is intended to alert the user to the presence of uninsulated "dangerous voltage" within the product's enclosure that may be of sufficient magnitude to constitute a risk of electric shock.



The exclamation point within an equilateral triangle is intended to alert the user to the presence of important operation and servicing instructions in the literature accompanying the appliance.

### For Customer Use:

Enter below the serial number that is located on the bottom of the unit. Retain this information for future reference.

Model No. \_\_\_\_\_ DP850, DP852 or DP854 \_\_\_\_\_

Serial No. \_\_\_\_\_



For recycling or disposal information about this product, please contact your local authorities or the Electronics Industries Alliance: [www.eiae.org](http://www.eiae.org).

## PRECAUTIONS

### WARNING:

To prevent fire or shock hazard, do not expose this device to rain or moisture. Dangerous high voltage is present inside the enclosure. Do not open the cabinet.

**CAUTION:** To prevent electric shock, match wide blade of plug to wide slot of outlet and fully insert.

**Protect your hearing:** Hearing experts advise against the constant use of personal stereos played at high volume. Constant exposure to high volumes can lead to hearing loss. If you should experience ringing in the ears or hearing loss, discontinue use and seek medical advice.

### FCC Statement:

this device complies with Part 15 of the FCC Rules. Operation is subject to the following two conditions:

- (1) This device may not cause harmful interference, and
- (2) This device must accept any interference received, including interference that may cause undesired operation.

### Note:

This equipment has been tested and found to comply with the limits for Class B digital devices, pursuant to Part 15 of the FCC rules. These limits are designed to provide reasonable protection against harmful interference in a residential installation. This equipment generates, uses and can radiate radio frequency energy and, if not installed and used in accordance with the instructions, may cause harmful interference to radio communications. However, there is no guarantee that interference will not occur in a particular installation. If this equipment does cause harmful interference to radio or television reception, which can be determined by turning the equipment off and on, the user is encouraged to try to correct the interference by one or more of the following measures:

- Reorient or relocate the receiving antenna.
- Increase the separation between the equipment and receiver.
- Connect the equipment into an outlet on a circuit different from that to which the receiver is connected.
- Consult the dealer or an experienced radio/TV technician for help

Use of shielded cable is required to comply with Class B limits in Subpart B of Part 15 of the FCC rules.

Do not make any changes or modifications to the equipment unless otherwise specified in the manual. If such changes or modifications should be made, you could be required to stop operation of the equipment.

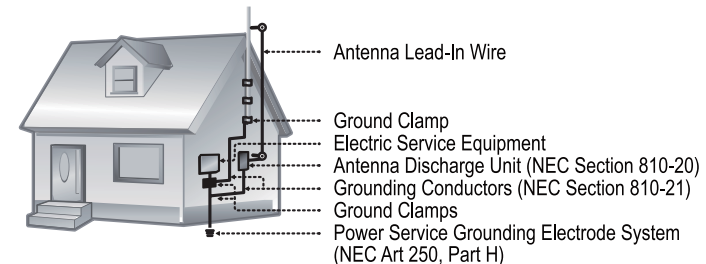
## IMPORTANT SAFETY INSTRUCTIONS

1. **Read Instructions:** All the safety and operating instructions should be read before the product is operated.
2. **Retain Instructions:** The safety and operating instructions should be retained for future reference.
3. **Heed Warnings:** All warnings on the product and in the operating instructions should be adhered to.
4. **Follow Instructions:** All operating and usage instructions should be followed.
5. **Cleaning:** Unplug this product from the wall outlet before cleaning. Do not use liquid cleaners or aerosol cleaners. Use a damp cloth for cleaning.
6. **Attachments:** Use only attachments recommended by the manufacturer. Use of other attachments may be hazardous.
7. **Water and Moisture:** Do not use this product near water (e.g., near a bath tub, washbowl, kitchen sink, laundry tub, in wet basements, or near a swimming pool and the like).
8. **Accessories:** Do not place this product on an unstable cart, stand, tripod, bracket, or table. Use only with carts, stands, tripods, brackets, or tables recommended by the manufacturer or sold with the product. Any mounting of the product should follow the manufacturer's instructions and should use a mounting accessory recommended by the manufacturer.
9. A product and cart combination should be moved with care. Quick stops, excessive force, and uneven surfaces may cause the product and cart combination to overturn.
10. **Ventilation:** Slots and openings in the cabinet are provided for ventilation to ensure reliable operation of the product and to protect it from overheating. These openings should never be blocked by placing the product on a bed, sofa, rug, or other similar surface. This product should not be placed in a built-in installation such as a bookcase or rack unless proper ventilation is provided or the manufacturer instructions have been adhered to.
11. **Power Sources:** This product should be operated only from the type of power source indicated on the rating label. If you are not sure of the type of power supply to your home, consult your product dealer or local power company. For products intended to operate from battery power or other sources, refer to the operating instructions.



## IMPORTANT SAFETY INSTRUCTIONS

12. **Grounding or Polarization:** This product may be equipped with a polarized alternating-current line plug that has one blade wider than the other. This plug will only fit into the power outlet in one direction. This is a safety feature. If you are unable to insert the plug fully into the outlet, try reversing the direction of the plug. If the plug should still fail to fit, contact an electrician to replace the obsolete outlet. Do not defeat the safety purpose of the polarized plug.
13. **Power-Cord Protection:** Power supply cords should be routed so that they are not likely to be walked on or pinched by items placed upon or against them, paying particular attention to cords at plugs, convenience receptacles, and at the point which they exit from the product.
14. **Protective Attachment Plug:** The product may be equipped with an attachment plug with overload protection. This is a safety feature. See the operating instructions for replacement or directions to reset the protective device. If replacement of the plug is required, be sure the service technician has used a replacement plug that has the same overload protection as the original plug as specified by the manufacturer.
15. **Outdoor Antenna Grounding:** If an outside antenna is connected to the product, be sure the antenna system is grounded so as to provide some protection against voltage surges and built-up static charges. Article 810 of the National Electrical Code, ANS/NFPA 70 provides information with regard to proper grounding of the mast and supporting structure, grounding of the lead-in wire to an antenna-discharge unit, size of grounding conductors, location of antenna-discharge unit, connection to grounding electrodes, and requirements for the grounding electrode (see figure).



## IMPORTANT SAFETY INSTRUCTIONS

16. **Lightning:** For added protection for this product, unplug it from the wall outlet and disconnect the antenna or cable system during a lightning storm or when it is left unattended and unused for long periods of time. This will prevent damage to the product due to lightning or power-line surges.
17. **Power Lines:** An outside antenna system should not be located in the vicinity of overhead power lines or other electric light or power circuits, or where it can fall into such power lines or circuits. When installing an outside antenna system, extreme care should be taken to keep from touching such power lines or circuits, as contact with them might be fatal.
18. **Overloading:** Do not overload wall outlets, extension cords, or integral convenience receptacles as this can result in a risk of fire or electric shock.
19. **Object and Liquid Entry:** Never push objects of any kind into this product through openings as they may touch dangerous voltage points or short-out parts that could result in a fire or electric shock. Never spill liquid of any kind on the product.
20. **Servicing:** Do not attempt to service this product yourself as opening or removing covers may expose you to dangerous voltage or other hazards. Refer all servicing to qualified service personnel.
21. **Damage Requiring Service:** Unplug this product from the wall outlet and refer servicing to qualified service personnel under the following conditions: a) when the power-supply or plug is damaged; b) if liquid has been spilled or if objects have fallen into the product; c) if the product has been exposed to rain or water; d) if the product does not operate normally by following the operating instructions as improper adjustment of other controls may result in damage and will often require extensive work by a qualified technician to restore the product to its normal operation; e) if the product has been dropped or damaged in any way; f) when the product exhibits a distinct change in performance—this indicates a need for service.
22. **Replacement Parts:** When replacement parts are required, be sure that your service technician has used replacement parts specified by the manufacturer or have the same characteristics as the original part. Unauthorized substitutions may result in fire, electric shock, or other hazards.
23. **Safety Check:** Upon completion of any service or repairs to this product, ask the service technician to perform safety checks to ensure that the product is in proper operating condition.

## IMPORTANT SAFETY INSTRUCTIONS

24. **Wall or Ceiling Mounting:** The product should be mounted to a wall or ceiling only as recommended by the manufacturer.
25. **Heat:** The product should be situated away from heat sources such as radiators, heat registers, stoves, or other products (including amplifiers) that produce heat.

## TABLE OF CONTENTS

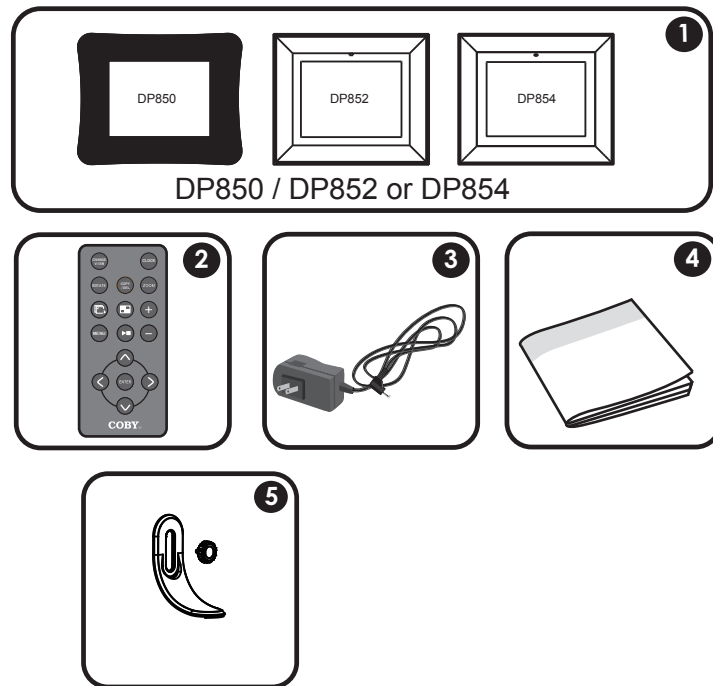
<b>PRECAUTIONS</b> .....	<b>2</b>
<b>IMPORTANT SAFETY INSTRUCTIONS</b> .....	<b>4</b>
<b>TABLE OF CONTENTS</b> .....	<b>8</b>
<b>PACKAGE CONTENTS</b> .....	<b>10</b>
<b>FEATURES</b> .....	<b>11</b>
<b>LOCATION OF CONTROLS</b> .....	<b>12</b>
Top View .....	12
Left View .....	13
Right View .....	13
Front View .....	13
Rear View .....	13
Remote Control .....	13
<b>GETTING STARTED</b> .....	<b>14</b>
Using the Remote Control.....	14
Installing a Memory Card.....	15
Powering your Digital Picture Frame.....	15
Turning Your Photo Frame On/Off.....	16
Menu Interface Navigation.....	16
Computer Connection (USB) .....	16
Connecting to a Computer .....	16
Main Menu Screen .....	17
<b>SLIDESHOW MODE</b> .....	<b>18</b>
Slideshow .....	18
<b>PHOTO MODE</b> .....	<b>19</b>
Photo Mode Screen .....	19
Photo View .....	20
Zoom .....	20
Rotation .....	20
Changing View .....	20
<b>MOVIE MODE</b> .....	<b>21</b>
Video List Screen .....	21
Video Controls .....	22
<b>MUSIC MODE</b> .....	<b>23</b>
Music List .....	23
Music Playback Screen .....	24
Music Controls .....	24

## TABLE OF CONTENTS

<b>CALENDAR</b> .....	<b>25</b>
Date & Clock Screen .....	25
<b>CREATING SLIDESHOWS</b> .....	<b>26</b>
Opening the Vividshare .....	26
Photo Set .....	27
Buttons in the Storyboard .....	27
Buttons in the Timeline .....	28
Editing the Length of Photos and Music in the Timeline .....	28
Style .....	29
On the Style Screen .....	29
Decoration .....	30
Text .....	30
Clipart .....	31
Effect .....	31
Adjusting the Length of the Text / Clipart / Effect .....	32
Buttons in the Timeline .....	32
Create .....	33
<b>VIVIDSHARE MODE</b> .....	<b>34</b>
Enjoying Your slideshows .....	34
<b>FILE MANAGER</b> .....	<b>35</b>
File List .....	35
Deleting / Copying a File.....	35
<b>SETUP MENU</b> .....	<b>36</b>
System Setup.....	36
Photo Setup .....	37
Calendar Setup .....	37
Video Setup .....	38
Music Setup .....	38
VividShare Setup .....	38
<b>CABLE CONNECTION</b> .....	<b>39</b>
Headphones .....	39
<b>KICKSTAND</b> .....	<b>40</b>
<b>FIRMWARE UPGRADES</b> .....	<b>41</b>
<b>TROUBLESHOOTING</b> .....	<b>42</b>
<b>SPECIFICATIONS</b> .....	<b>45</b>
<b>SYSTEM REQUIREMENTS for Vividshare</b> .....	<b>46</b>

## PACKAGE CONTENTS

Please make sure that the items shown below are included in the package. Should an item be missing, please contact the local retailer from which you purchased this product.

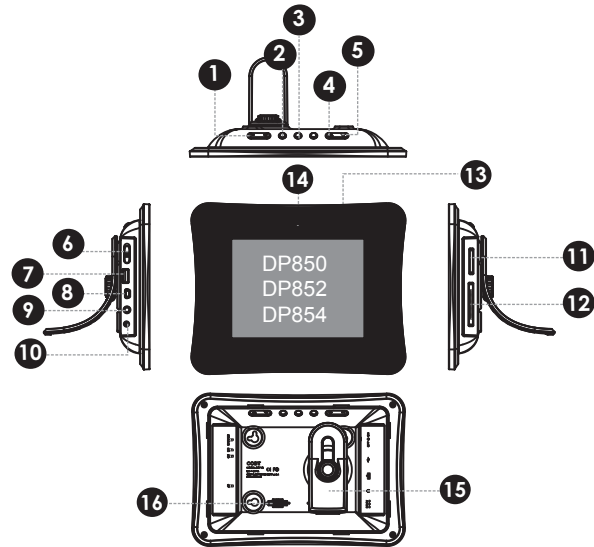


1. DP Frame x 1  
(DP850 , DP852 or DP854)
2. Remote Control x 1
3. AC Adapter x 1
4. Manual x 1
5. Kickstand and Screw x 1

## FEATURES

- 8" widescreen TFT LCD color display
- Displays JPEG, BMP and JPG photo files
- Plays MP3, WMA, OGG,ADPCM-WAV and PCM-WAV music files
- Plays MJPEG, MPEG-4, AVI, MOV, MP4, 3GP video files
- Photo slideshow mode with music
- Calendar and clock with alarm timer
- Card slots
- Full-size USB port for use with flash memory drives
- Integrated speaker
- Full-function remote control included
- Wall-mountable design with detachable stand

## LOCATION OF CONTROLS



### TOP VIEW

#### 1. VOL -

- Press for left in Photo Thumbnail Mode.
- To turn down the volume level in Music, Video and Photo / Slideshow mode.
- In File Manager Mode: press this button to access the " Copy to internal memory? " dialogue box, select and confirm Yes to start copying.

#### VOL +

- Press for right in Photo Thumbnail Mode.
  - To turn up the volume level in Music, Video and Slideshow Mode.
  - In File Manager Mode: press this button to access the " Delete files ? " dialogue box, select and confirm Yes to delete.
- #### 2. Enter / Slideshow
- Press for enter during menu selection.
  - Press this button to play/pause music / video.
  - Press this button to pause the

background music in photo (full-screen) display mode/ slideshow mode, press again to resume the music.

- In photo (full-screen) display mode, press and hold this button to start / stop photo slideshow.

#### 3. Change View

- Press this button to shift between the view modes Crop to Fill, Full Screen and Fit to Screen in photo (full-screen) display mode.
- In Calendar Mode: Press this button to change the Calendar Mode.

#### 4. Menu

- Press for exit.
- On the Main Menu Screen, press this button to move the cursor to the memory device list.

#### 5. Down

- Press for down during menu selection.
- On the Main Menu Screen, select the desired memory device, and then press

## LOCATION OF CONTROLS

the ENTER button to confirm.

- Press this button to fast-reverse through the current track during music/video playback, press again for normal playback.
- Press this button to view the previous image in photo / slideshow mode.

### Up

- Press for up during menu selection.
- On the Main Menu Screen, select the desired memory device, and then press the ENTER button to confirm.
- Press this button to fast-forward through the current track during music/video playback, press again for normal playback.
- Press this button to view next image in photo / slideshow mode.

### LEFT VIEW

- 6. Power switch

### Remote Control

1. CHANGE VIEW
2. ROTATE
3. SLIDESHOW
4. MENU
5. PLAY / PAUSE
6. UP ▲
- LEFT ◀
- DOWN ▼
- RIGHT ▶
7. ENTER
8. CLOCK
9. COPY / DELETE
10. ZOOM
11. THUMBNAIL
12. VOL +
13. VOL -

7. USB Full-Size ( For use with USB flash drives)
8. USB-Mini ( for PC connection)
9. Headphone / Earphone Jack
10. Power in Jack

### RIGHT VIEW ( CARD SLOTS)

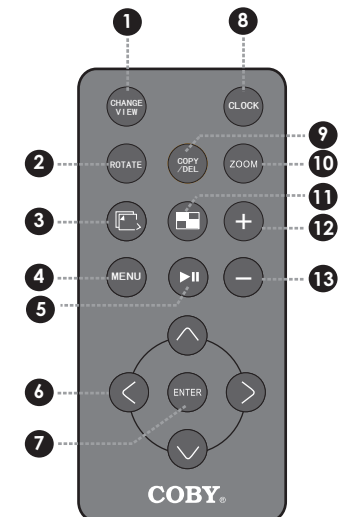
11. Secure Digital (SD) / Multi Media Card (MMC) / Memory Stick (MS) / XD-Picture (XD)
12. Compact Flash (CF)

### FRONT VIEW

13. 8" TFT LCD Screen
14. Remote Sensor

### REAR VIEW

15. Detachable Kickstand
16. Speaker and Ventilation Slots

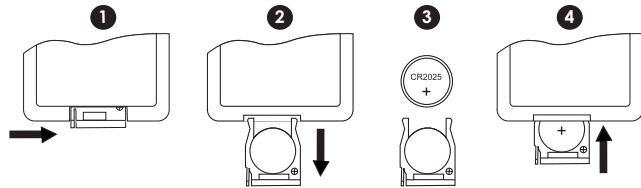


## GETTING STARTED

### Using the Remote Control

To load a battery in the remote:

1. Pull in the direction of the arrow
2. Slide the compartment out
3. Place the battery in the compartment with the positive side ( + ) facing up
4. Push the compartment in to close



To use the remote:

- Point the remote at the remote sensor of the photo frame at a distance of no more than 15 feet (15") and at an angle no greater than 60 degrees.
- Batteries will last for about one year under typical usage. Replace the batteries if the remote is no longer working.
- Do not spill water on the remote control.
- Do not use the remote control for other equipment at the same time.
- Remove the batteries if the remote control will not be in use for an extended period of time.



*The battery used in this device may present a fire or chemical hazard if mistreated. Do not recharge, disassemble, incinerate, or heat the batteries.*

*Used batteries should be disposed of safely and not incinerated. Attention should be shown to the environmental aspects of battery disposal.*

*Keep batteries out of the reach of children.*

## GETTING STARTED

### Installing a Memory Card

Your picture frame supports the following types of memory cards:

- Memory Stick (MS)
- Compact Flash (CF)
- XD-Picture (XD)
- Secure Digital (SD)
- Multi Media Card (MMC)
- USB Flash Storage Drive

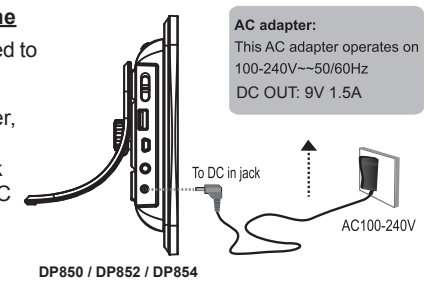
Simply insert the memory card of your choice into its corresponding card slot located on the left panel of the photo frame. Take care to orient the card in the proper direction.

Getting photos and files onto your picture frame for viewing couldn't be easier!

### Powering your Digital Picture Frame

Your Picture Frame should be connected to an AC 100-240V wall outlet.

- Using the supplied power adapter, plug one end of the adapter into your photo frame's Power In jack and plug the other end into an AC 100-240V wall outlet.



*Do not connect the power plug to a power outlet other than that which is indicated here or on the label as this may result in the risk of fire or electric shock.*

*Do not handle the power plug with wet hands. Doing so may cause electric shock.*

*Use only AC adapters of the type specified here. Failure to do so may cause a fire or damage the player.*



## GETTING STARTED

### Turning Your Photo Frame On/Off

- To turn your photo frame on, set the Power Switch to the “On” position.
- To turn your photo frame off, set the Power Switch to the “Off” position.

### Menu Interface Navigation

To select the different menu options and files of your digital photo frame:

- Use the Navigation keys to make a selection.
  - To move the selection up, press ▲
  - To move the selection down, press ▼
  - To move the selection left, press ◀
  - To move the selection right, press ▶
  - **Press ENTER to confirm the highlighted selection.**
- To return to the previous screen, press MENU.

### Computer Connection (USB)

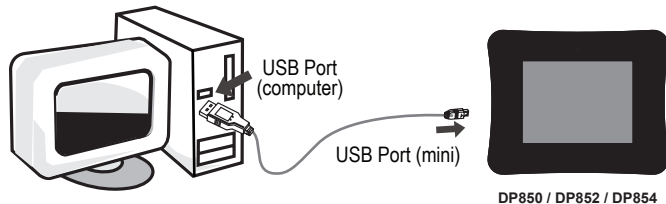
Connect the DP frame to a computer with a USB cable to:

- Transfer files to and from your photo frame's installed memory cards.
- Perform basic file management functions.
- To make photo slideshows in Vividshare software. See Creating Slideshows for operation details. To enjoy the slideshows on this DP frame, see Vividshare Mode sections for operation details.

### Connecting to a Computer

Connect the photo frame to your computer with a USB cable. Upon connection:

- Your computer will automatically recognize the memory cards installed in your photo frame. Icons representing your installed memory cards will appear as “Removable Disk” when you open “My Computer”.



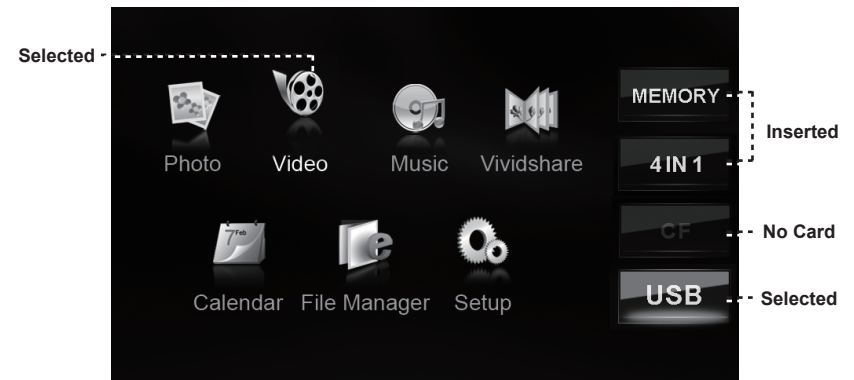
*Make sure that there's no USB flash drive connecting to the DP frame before connecting the DP frame to a computer.*

## GETTING STARTED

### Main Menu Screen

Upon turning on the power, your photo frame will display the “Main Menu” screen shown below.

- Press the MENU button and then press the UP/DOWN button to select an available card slot.



### MAIN MENU SCREEN

**Inserted:** A card icon that is in-color indicates that a memory card has been inserted (installed) in the corresponding slot.

**No Card:** A card icon that is grayed-out indicates that a memory card has not been installed in the corresponding slot and is not available for use.

**Selected:**

- A highlighted frame indicates that the card slot is selected. Only card slots with an installed memory card may be selected.
- Highlighted: the Video icon is being selected.

**Memory:** Built-in Memory    **4 IN 1:** SD / MMC / MS / XD Card

**CF:** CF card

**USB:** USB flash drive


You can save pictures on the Memory ( built-in memory ) and enjoy them as a demo slideshow. see File Manager section for operation details.


The demo slideshow will automatically start in approximately 8 seconds if there is no card inserted.

The demo slideshow will stop when a card is inserted or any button is pressed.

## SLIDESHOW MODE

### **Slideshow**

To display your photographs as a slideshow, press the SLIDESHOW  button at any time.

- To pause / resume background music during the slideshow, press the ENTER button.
- To play the next / previous track, press the UP or DOWN button.
- To adjust the volume level, press the VOL- or VOL+ button.
- To stop the slideshow, press the SLIDESHOW  button, press it again to resume.
- To exit, press the MENU button.

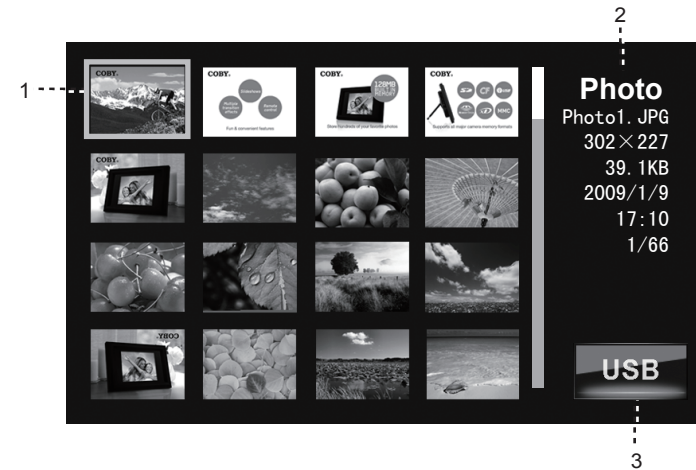
## PHOTO MODE

Press the Thumbnail button or select the PHOTO icon on the Main Menu screen and press the ENTER button to enter the Photo Mode shown below:

*( Make sure that the Display Mode is set to Thumbnail in Photo Setup, See SETUP section.)*

### **PHOTO MODE SCREEN**

- To display a photo (full screen), use the direction buttons to select a thumbnail and press the ENTER button to confirm.



1. An image file is being selected.
2. Information of the Selected image file.
3. Current Memory Device



*The Photo List will display supported Photo files, only.  
Your photo frame can display baseline JPEG / JPG / BMP files.*

## PHOTO MODE

### **Photo View**

Select a thumbnail from the Photo Mode screen and press the ENTER button to display the photo in full-screen.

- To view the previous photo, press the LEFT button (or the UP button on the DP frame).
- To view the next photo, press the RIGHT button (or the DOWN button on the DP frame).
- To change the background music press the UP / DOWN button on the remote control.
- To rotate the photo, press the ROTATE button.

### **Zoom**

To change the level of magnification, press ZOOM.

- Each successive press of ZOOM will change the level of magnification as shown below:

125% ➔ 150% ➔ 175% ➔ 200% ➔ 225% ➔ 250% ➔ ZOOM OFF

- To pan around the magnified picture, use the direction keys.
- During magnification, press the ENTER button for 100% display.

### **Rotation**

To rotate the picture, press the Rotate button.

- Each successive press of ROTATE will change the degree of rotation as shown below:

Rotation 90° ➔ Rotation 180° ➔ Rotation 270° ➔ Rotation 0°

### **Changing View**

Press the CHANGE VIEW button to change between the screen ratio modes Full Screen, Fit to Screen and Crop to Fill.

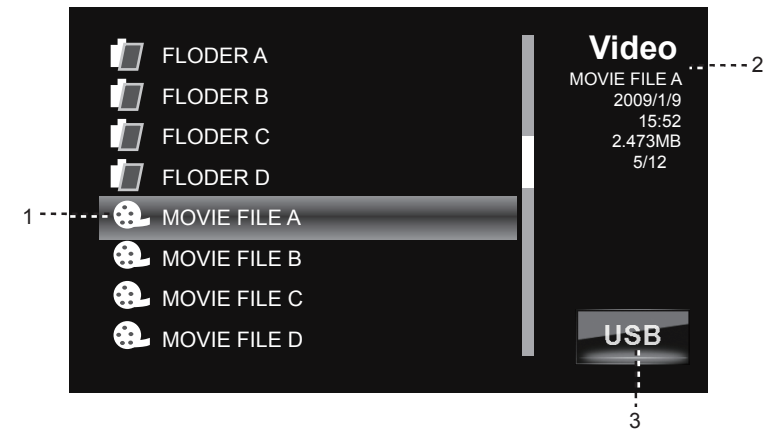
## MOVIE MODE

To play your digital video files, select the Video icon from the Main Menu screen and press the ENTER button.

### **Video List Screen**

Upon entering Video Mode, your photo frame will scan the memory device for available video files and display the "Video List" screen shown below. The Video List displays the filenames of all available video files.

- Use the direction keys to select a video file and press the ENTER button to start playback.



1. A video file is being selected.
2. Information of the selected File.
3. Current Memory Device



*The Video List will display supported Video files, only.  
Your photo frame can play Motion JPEG, AVI, MPEG1 and MPEG4 video files.*

## MOVIE MODE

### Video Controls

Use the DIRECTION keys to select a video file and press the ENTER button to start playback.

During playback:

- To pause playback, press the PLAY / PAUSE button. To resume playback, press it again.
- To adjust the volume level, press the VOL- or VOL+ button.
- To fast-forward through the current file, press the RIGHT button on the remote control (or the UP button on the DP frame).
- To fast-reverse through the current file, press the LEFT button on the remote control (or the DOWN button on the DP frame).
- Press the ENTER button for normal playback.
- To stop playback, press the MENU button.

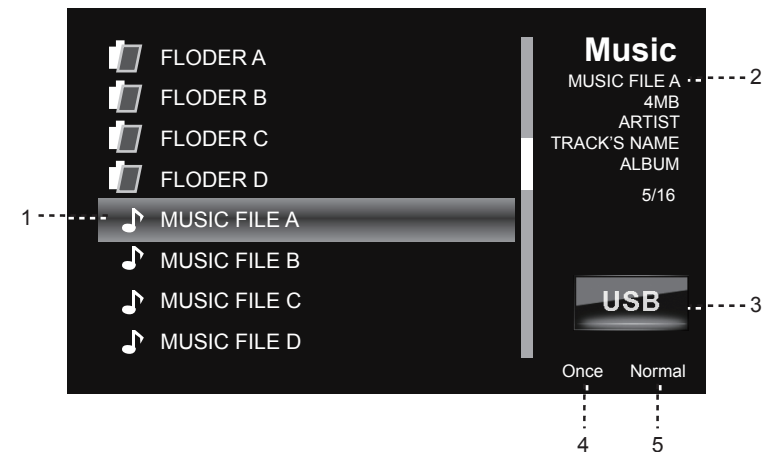
## MUSIC MODE

To play your digital audio files, select Music icon from the Main Menu screen and press the ENTER button.

### Music List

Upon entering Music Mode, your photo frame will scan the memory device for available audio files and display the "Music List" screen shown below. The Music List displays the filenames of all available audio files.

- Use the direction keys to select an audio file and press the ENTER button to start playback.



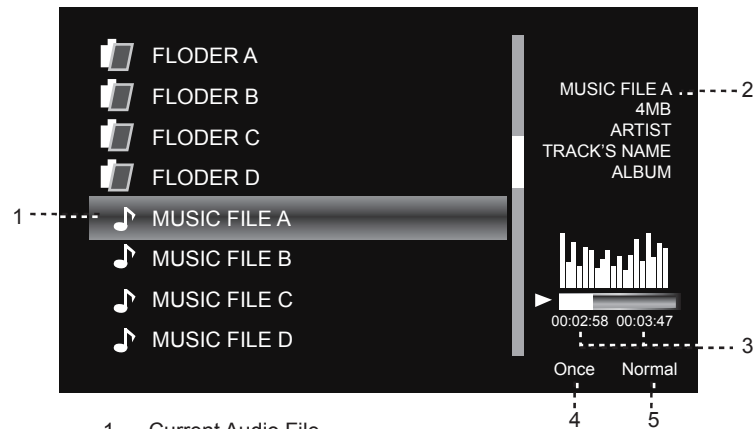
1. A music file is being selected.
2. Information of the selected File.
3. Current memory device.
4. Music Effect ( See SETUP section).
5. Playback Mode ( See SETUP section).



*The Music List will display supported audio files, only.  
Your photo frame can play digital MP3, WMA and OGG audio files*

## MUSIC MODE

### Music Playback Screen



1. Current Audio File
2. Information of the Current Song.
3. Elapsed Time / Total Playback Time
4. Playback Mode ( See Music Setup in SETUP section).
5. Music Effect ( See Music Setup in SETUP section).

### Music Controls

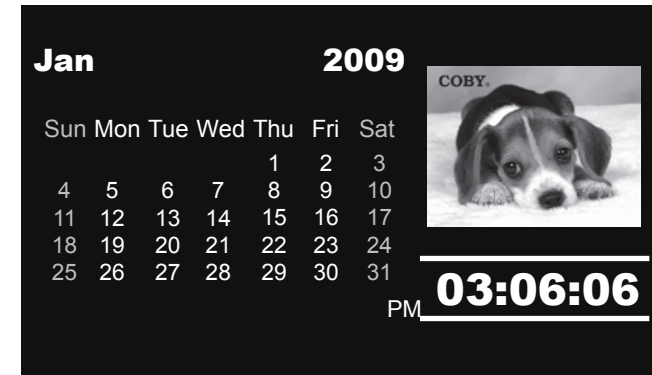
During playback:

- To pause playback, press the PLAY/PAUSE button. To resume playback, press it again.
- To fast-forward through the current file, press the RIGHT button on the remote control, press it again for normal playback.
- To fast-reverse through the current file, press the LEFT button on the remote control, press it again for normal playback.
- To play the next file, press the DOWN button to select and press the ENTER button to confirm.
- To play the previous file, press the UP button to select and press the ENTER button to confirm.
- To stop playback, press the MENU button.

## CALENDAR

To view the time and date, press the CLOCK button on the remote control or select the Calendar icon from the Main Menu screen and press the ENTER button to access the Date & Clock Screen.

### Date & Clock Screen



- Press the UP/DOWN button on the remote control to view the next / previous month.
- Press the ENTER button to pause the background music and the slideshow, press again to resume.
- Press the VOL+/VOL- to adjust the volume level.
- There're five Date & Clock display modes available, you can press the CHANGEVIEW button to select the desired one.




Details of operation for setting the time, date and alarm, see Calendar Setup in SETUP section.

## CREATING SLIDESHOWS

To create photo slideshows in the Vividshare and enjoy them on this DP frame.

### Opening the Vividshare

- Connect the DP frame to a computer by a USB cable ( see Computer Connection section).
- Open “My Computer” and double-click the  Vividshare icon to access the Vividshare shown below.



Vividshare

1. Disks / Folders on the Computer.
2. Preview Panel: displays photo thumbnails of the selected disk.
3. Sort / Size: sorts files by size, name etc.
4. Photo Set / Style / Decoration / Create Tab
5. Storyboard / Timeline
6. Buttons in Storyboard / Timeline



Make sure that there's no USB flash drive connecting to the DP frame before connecting the DP frame to a computer.

## CREATING SLIDESHOWS

### Photo Set

Select images files from the Preview Panel for creating photo slideshow.

- In Preview Panel, hold down the Ctrl key on the keyboard and select the desired image files, then release the Ctrl key and click the Add Photo button to add the image files in the Storyboard / Timeline.



Storyboard / Timeline

### Buttons in the Storyboard

**Add Photo:** Select image files from the Preview panel and click Add Photo to confirm them to be the slideshow photos, which will be displayed in Storyboard / Timeline.

**Add Audio:** Click this button and select the desired audio file from the computer, press the OK button to confirm.

**Edit Photo:** Select a photo file from the Storyboard, and press this button to access the Edit Photo window.

- Click the Add Text button to activate the Text panel for adding text.
- Select Rotate / Crop to rotate / crop the current image.
- Select Effect to change the color / brightness / contrast of the current image file.
- To save the settings, click Save. Click OK to save it in the Timeline / Storyboard and exit. Click Restore to reset all these settings to their factory default state. Click Cancel to exit without saving.



Edit Photo Window

**Delete Photo:** Select the unwanted photo from the Storyboard and click this button to delete it from the Storyboard.

**Background:** Sets the background color of the current slideshow.



Creating a Photo Slideshow needs at least 6 image files.

## CREATING SLIDESHOWS

### Buttons in the Timeline

Click the Timeline button on the Vividshare window to access the Timeline.

**Add Photo / Add Audio /Background:** Operation details, see Buttons in the Storyboard section.

**Delete Sytle:** Select the unwanted style from the Timeline and click this button to delete it.

### Editing the length of photos and music in the Timeline



- Move the cursor to the connection line of images, click the line to view the length of the image.
- Move the cursor to the connection line of the images, the cursor then will turn to  $\leftrightarrow$ , drag the connection line to the left / right to adjust the length.
- To adjust the length of the audio, move the cursor to the end of the Music bar, when the cursor becomes  $\leftrightarrow$ , drag the end of the bar to the left/right. You can also slide the Music bar to the left / right in the Timeline.



- Details of operation for Double Click to Add Text, Drag Clipart to here, Drag Effect to here, see Decoration Section.
- You can edit the length of photos, music, Text, Clipart and Effect in the Timeline.

## CREATING SLIDESHOWS

### Style

To select / change animated styles of the photos.  
Click Style tab to enter Style screen shown below.



### On the Style screen:

- Click a style file from A\_Modern / B\_Theme / C\_Photon to preview it.
- Select the desired style file from the File List and click the Add Style button to add the style in the Timeline.
- To replace a style, drag and drop a new style to the one that you want to replace in the Timeline.
- To delete a style file, select an unwanted style from the Timeline, and click Delete Style button.



The number shown on the animated style file is the number of photos needed for this style.

# CREATING SLIDESHOWS

## Decoration

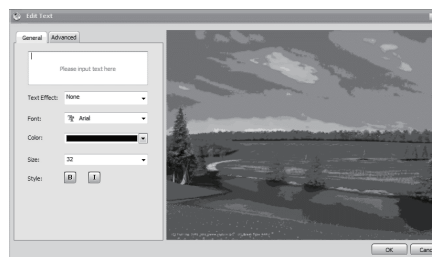
you can add your customized text caption with different text effects, stunning scene effect, animated clipart and sound in flexible timeline to make your photo slideshows more funny and lively.



Decoration Screen

## • Text

Click the Add Text button for editing texts, click the Advanced button for advanced text effect. Click Ok to add the text in the Timeline.



Add Text Window

# CREATING SLIDESHOWS

## • Clipart

Click Clipart button and select a clipart image from the File List and click the Add button to access the Edit Clipart window shown below:



Edit Clipart

- You can adjust the Size / Rotation / Alpha of the current clipart.
- Click the OK button to add the Clipart in the Timeline.

## • Effect

- Click Effect button and select a file from the File List.
- Click the Add button to add it in the Timeline.



## CREATING SLIDESHOWS

### • Adjusting the length of the Text / Clipart / Effect

After adding the Text, Clipart and the Effect, the Timeline displays their bars shown below:

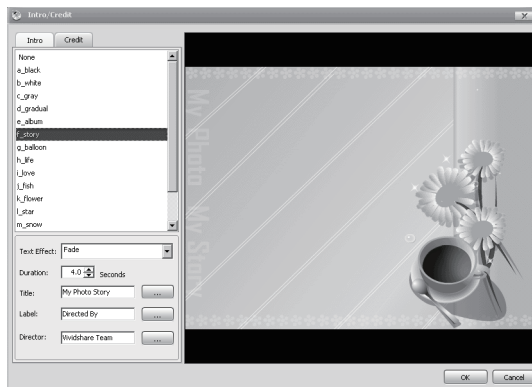


To adjust the length of the Text / Clipart / Effect, move the cursor to the end of the bar, when the cursor becomes  $\leftrightarrow$ , drag the end of the bar to the left / right. You can also slide the bar to the left / right in the Timeline.

### • Buttons in Timeline

#### Intro/Credit

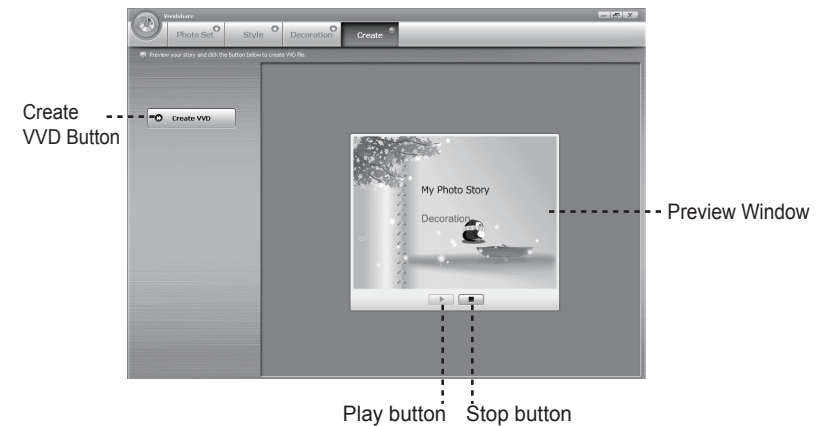
You can preview and pick your favorite Intro / Credit file and add your movie information, such as title, director, cast, etc, and set the text effects like movie style.



## CREATING SLIDESHOWS

### Create

After you preview the whole photo slideshow and feel satisfied with the effect, click the Create VVD button to create your photo slideshow in VVD format .



- Click the Play button to preview the whole photo slideshow.
- Click the Stop button to stop.
- Click the Create VVD button to start creating the photo slideshow in VVD format.
- After finished, click the YES to confirm.

## VIVIDSHARE MODE

### Enjoying Your slideshows

To enjoy the slideshows made by Vividshare on the DP frame. Select and confirm VividShare on the Main Menu screen.



- Press the LEFT / RIGHT button to select the desired slideshow file which will be displayed in the middle, press the ENTER button to start playback.

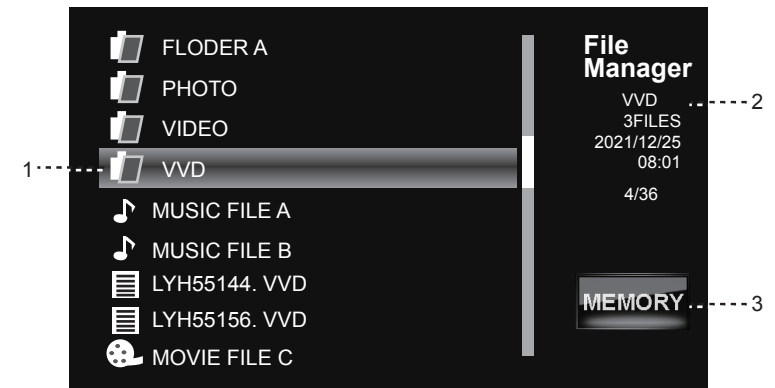
## FILE MANAGER

You can browse all supported digital files of the selected memory device and to delete files from the memory device or copy files from other memory devices to the built-in memory.

### File List

Upon entering File Manager, your photo frame will scan the memory device for all available files and display the "File List" screen shown below.

- Use the navigation keys to select a file and press the ENTER button to view its information.
- Press the MENU button to exit.



1. Selected Folder in the File List
2. Information of Selected Folder / File
3. Current Memory Device

### Deleting / Copy a File

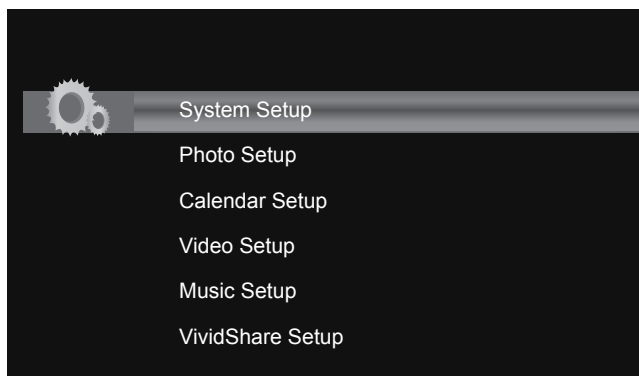
- To delete a file, select the unwanted file from the File List and press the COPY / DEL button to access the " COPY / DEL" dialogue box. Select DEL and then Confirm YES.
- To copy a file to the Memory (built-in memory), select the desired file from the File List and press the COPY / DEL button to access the " COPY/DEL" dialogue box. Select COPY and then confirm YES.
- Press the MENU button to exit.



Please refer to the Photo Mode, Music Mode, and Video Mode sections of this manual for playback controls

## SETUP MENU

To adjust the settings and options of your digital photo frame, select SETUP from the Main Menu and press the ENTER button to confirm. The Setup Menu will be displayed on screen.



- Use the DOWN/UP keys to highlight and display an option / sub-menu.
- Press the RIGHT/LEFT button to select an option.
- To exit the Setup Menu, press the MENU button.

### System Setup

Item	Instruction	Default setting
Brightness	Sets the brightness of the screen.	50
Backlight	Sets the backlight of the screen.	4
Contrast	Sets the Contrast of the screen.	50
Saturation	Sets the Saturation of the screen.	50
Hue	Sets the Hue of the screen.	50
Language	Sets the menu language of the player.	English
Auto-Power On	Sets the auto-power on/off time for the player.	
Auto-Power Off	1. Make sure the Power switch on the DP frame is set to ON. 2. Press the UP/DOWN button to select On / Off and time. 3. Press the LEFT/RIGHT button to select the desired time and On/Off.	
Auto-Power Frequency	Sets the Auto-Power On / Off Frequency.	
Reset	Resets all settings to their factory default state.	

## SETUP MENU

### Photo Setup

Item	Instruction	Default setting
Display Mode	Sets the photo display mode for entering the Photo Mode from the Main Menu.	Slideshow
Display Ratio	Sets the photo display ratio.	Fit to Screen
Slideshow Duration	Sets the time interval of slideshow photos.	5Sec.
Slideshow Effect	Sets the photo slideshow effect.	Random
Slideshow Repeat	Sets the photo slideshow repeat function on/off	On

### Calendar Setup

Item	Instruction	Default setting
Display Mode	Sets the Calendar display mode	Calendar+Time+Slideshow
Date	<b>To set Date:</b> Press the UP / DOWN button to select the number of the date and year, and press the LEFT/RIGHT button to adjust.	
Clock Mode	Sets the Clock Mode	12-Hour
Clock Time	<b>To set the Clock Time:</b> Press the UP / DOWN button to select the the time, and press the LEFT/RIGHT button to select the desired time.	
Alarm Time	<b>To set an Alarm Time:</b> Press the UP / DOWN button to select the Off/On and time and press the LEFT/RIGHT button to select the desired time and On. <b>To delay the alarm timer,</b> when the alarm timer sounds, press the ENTER button to turn it off completely, press any other buttons to delay it. The alarm timer will sound again 9 minutes, 18 minutes and 27 minutes later. The alarm will then turn off automatically.	
Alarm Frequency	Sets the Alarm Frequency	Mon to Fri.
Alarm Tone	Sets the Alarm Tone	Alarm 1
Snooze	Sets Snooze Mode	

## SETUP MENU

### Video Setup

Item	Instruction	Default setting
Display Ratio	Sets the Video display ratio.	Fit to Screen
Play Mode	Sets the Video Playback Mode.	Repeat

### Music Setup

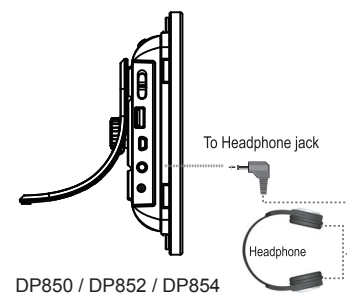
Item	Instruction	Default setting
Music Effect	Sets the music effect .	Normal
Play Mode	Sets the music playback mode.	Repeat

### VividShare Setup

Item	Instruction	Default setting
Play Mode	Sets the playback mode of VVD Slideshows.	Repeat

## CONNECTION

### Headphones



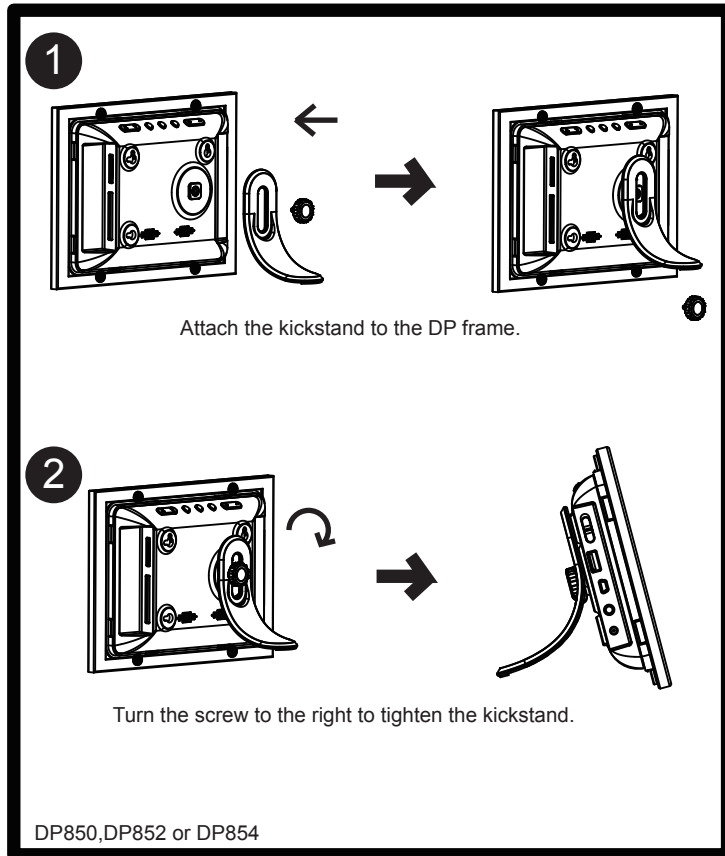
- Be sure that your unit is at low volume level before connecting the headphone.
- Increase the volume gradually to a comfortable listening level.

#### CAUTION:

*Hearing experts advise against the constant use of personal stereos played at high volume. Constant high volume use can lead to hearing loss. If you experience ringing in the ears or hearing loss, discontinue use and seek medical advice.*

## KICKSTAND

### Using the Kickstand



## FIRMWARE UPGRADES

From time to time, COBY may release firmware updates to improve the performance of the DP frame or to add additional features. Please check the COBY website periodically at [www.cobyusa.com](http://www.cobyusa.com) to see if new firmware has been released for your photo frame.



## TROUBLESHOOTING

## SPECIFICATIONS

Display Type	8" Full-Color TFT LCD
Display Resolution	800 (H) x 480 (V)
Memory	MS Card Slot CF Card Slot SD/MMC Card Slot xD Card Slot Full-size USB port
Audio Format Support	WMA (5 ~ 384kbps 8~48KHz) MP3 (8 ~ 320kbps 8~48KHz) OGG (64~ 320kbps 8~48KHz) ADPCM-WAV (32 ~ 384kbps 8~48KHz) PCM-WAV (128 ~ 1536kbps 8~48KHz)
Video Format Support	AVI, MOV, MP4 and 3GP MPEG4, MJPEG
Photo Format Support	JPEG, BMP, JPG
USB Host	USB 2.0 High-Speed
Audio Output	3.5mm Stereo / Headphone Built-in Speaker
Power Supply	DC 9V, 1.5A 100-240V AC Adapter
Built-in lithium battery	Supply battery for the clock for about 900 days.
Calendar	From 1900~ 2099 years.

## SYSTEM REQUIREMENTS for VIVIDSHARE

## NOTE

### System Requirements for Vividshare

Item	Basic	Recommended
Processor (CPU)	Pentium IV 1.0 GHz	Pentium IV 2.4 GHz or above
RAM	256 MB (For Windows 2000 and XP)	1GB (For Windows Vista)
Free Disk Space	512 MB available	1G or above
Software Support	Macromedia Flash Player 8.0	Macromedia Flash Player 9.0 or above
Operating System	Microsoft Windows 2000/XP (SP2 or later) /Vista	
Other requirements	DirectX 9.0 or above	
	Windows- compatible display with at least 1024dpi x 768dpi resolution	
	Windows- compatible sound card (Recommended)	





## Free Manuals Download Website

<http://myh66.com>

<http://usermanuals.us>

<http://www.somanuals.com>

<http://www.4manuals.cc>

<http://www.manual-lib.com>

<http://www.404manual.com>

<http://www.luxmanual.com>

<http://aubethermostatmanual.com>

Golf course search by state

<http://golfingnear.com>

Email search by domain

<http://emailbydomain.com>

Auto manuals search

<http://auto.somanuals.com>

TV manuals search

<http://tv.somanuals.com>