



Robert Bosch GmbH
Power Tools Division
70745 Leinfelden-Echterdingen
Germany

www.bosch-garden.com

F 016 L70 800 (2011.03) O / 115 **UNI**



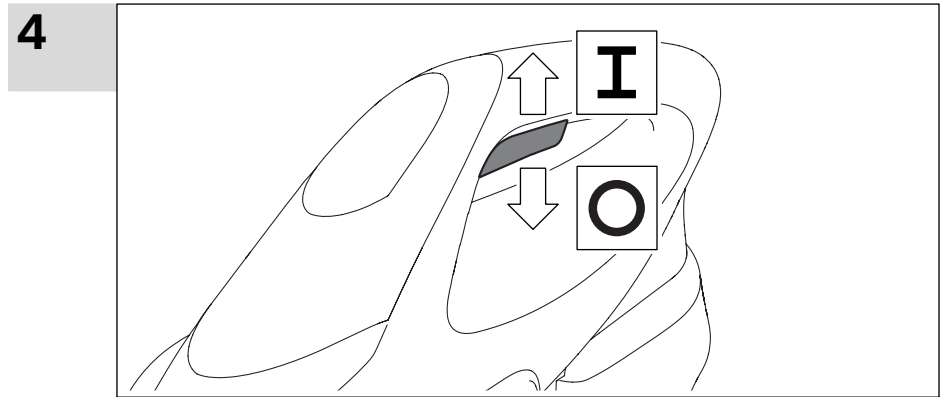
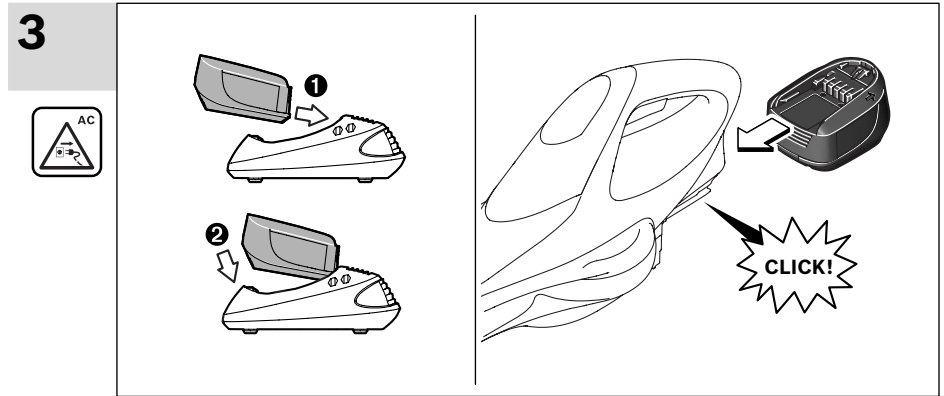
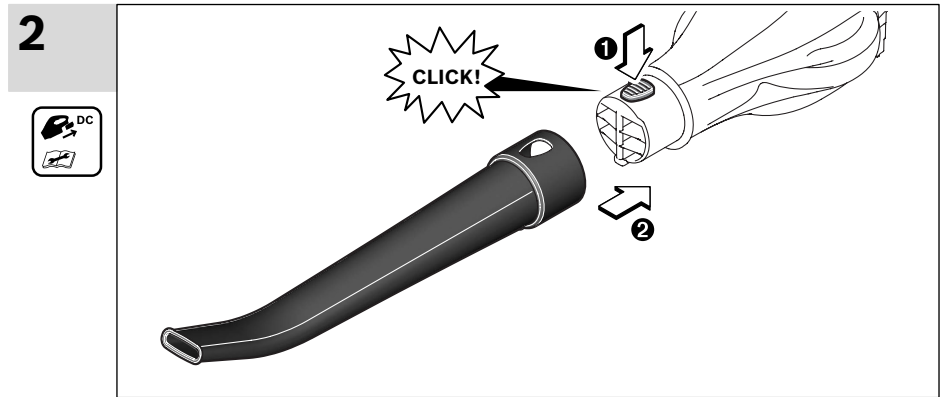
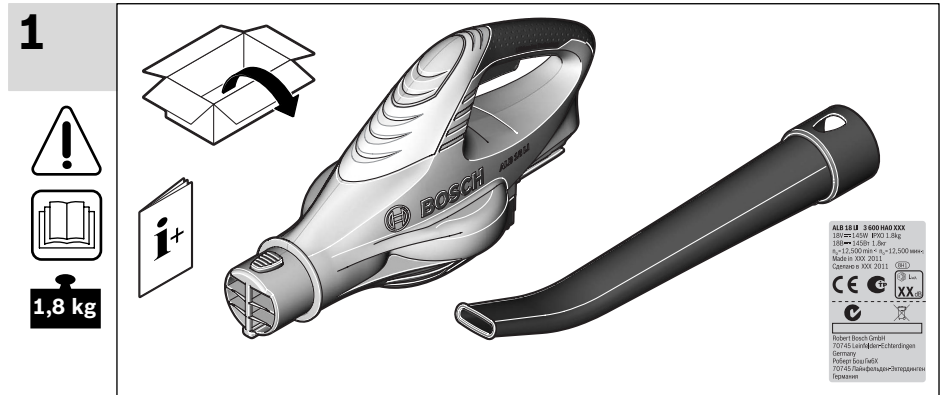
ALB 18 LI

 **BOSCH**

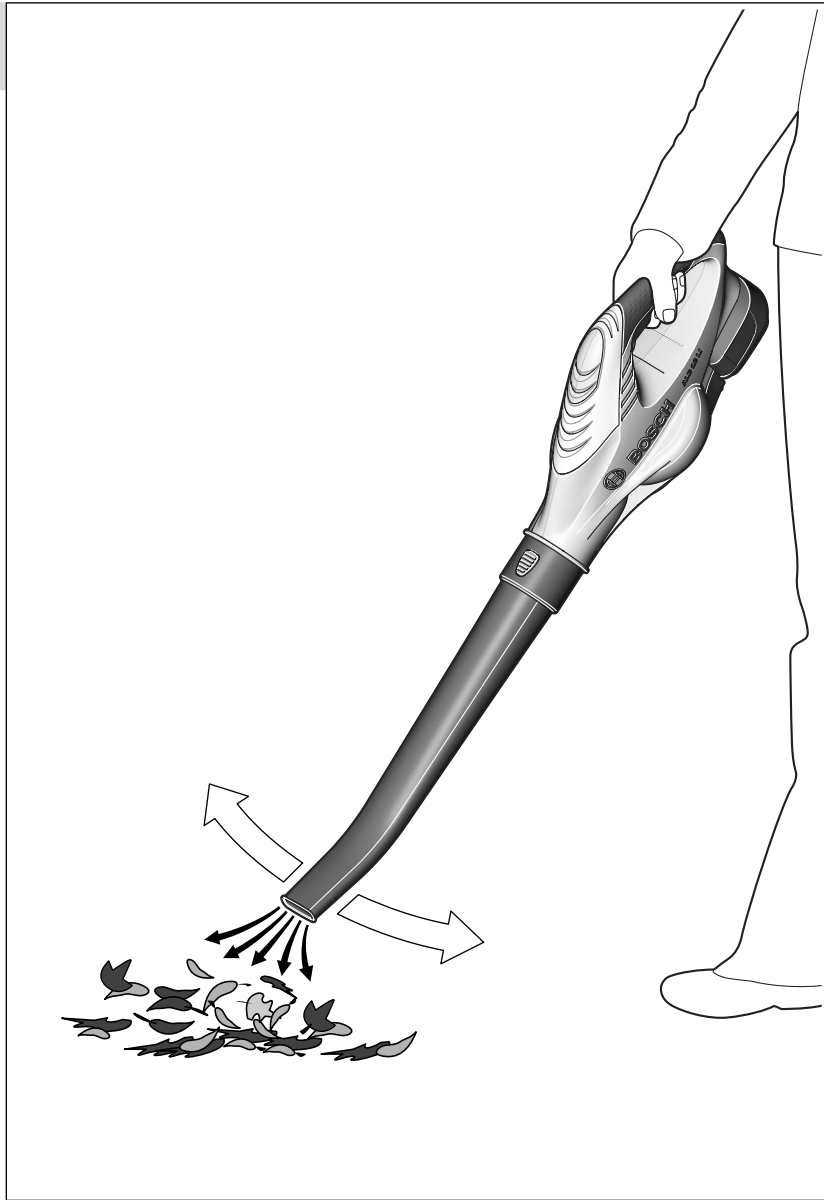
de Originalbetriebsanleitung	el Πρωτότυπο οδηγιών χρήσης	sr Originalno uputstvo za rad
en Original instructions	tr Orijinal işletme talimatı	sl Izvirna navodila
fr Notice originale	pl Instrukcja oryginalna	hr Originalne upute za rad
es Manual original	cs Původní návod k používání	et Algupärane kasutusjuhend
pt Manual original	sk Pôvodný návod na použitie	lv Instrukcijas oriģinālvalodā
it Istruzioni originali	hu Eredeti használati utasítás	lt Originali instrukcija
nl Oorspronkelijke gebruiksaanwijzing	ru Оригинальное руководст- во по эксплуатации	
da Original brugsanvisning	uk Оригінальна інструкція з експлуатації	
sv Bruksanvisning i original	ro Instrucțiuni originale	
no Original driftsinstruks	bg Оригинална инструкция	
fi Alkuperäiset ohjeet		



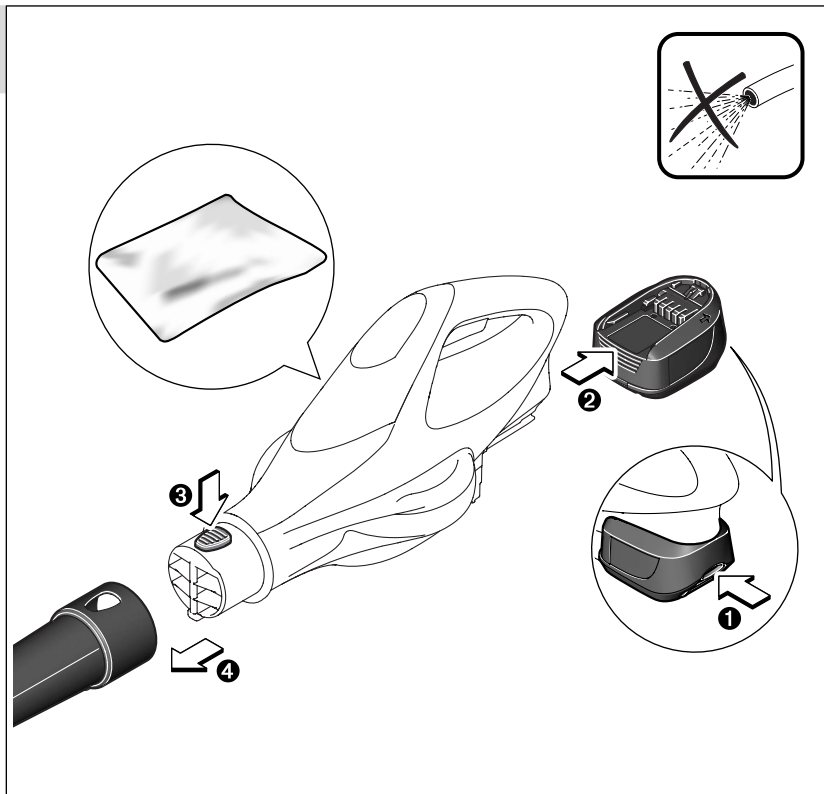
Deutsch	Seite	4	Česky	Strana	60
English	Page	8	Slovensky	Strana	64
Français	Page	12	Magyar	Oldal	68
Español	Página	16	Русский	Страница	72
Português	Página	20	Українська	Сторінка	77
Italiano	Pagina	24	Română	Pagina	82
Nederlands	Pagina	28	Български	Страница	86
Dansk	Side	32	Srpski	Strana	91
Svenska	Sida	36	Slovensko	Stran	95
Norsk	Side	40	Hrvatski	Stranica	99
Suomi	Sivu	44	Eesti	Lehekülg	103
Ελληνικά	Σελίδα	48	Latviešu	Lappuse	107
Türkçe	Sayfa	52	Lietuviškai	Puslapis	111
Polski	Strona	56			



5



6



Safety Notes

Warning! Read these instructions carefully, be familiar with the controls and the proper use of the machine. Please keep the instructions safe for later use!

Explanation of symbols on the machine



General hazard safety alert.



Read instruction manual.



Pay attention that bystanders are not injured through foreign objects thrown from the machine.



Keep bystanders a safe distance away from the machine.



Rotating fan. Keep hands and feet out of the openings while the machine is running.



Pay attention that bystanders are not injured through foreign objects thrown from the machine. Keep bystanders a safe distance away from the machine.



Wear safety goggles.



Remove battery before adjusting or cleaning, and before leaving the machine unattended for any period.



Do not work in the rain or leave the cordless leaf blower outdoors whilst raining.



Do not use the charger if the cord is damaged.

Operation

- ▶ Never allow children or people unfamiliar with these instructions to use the machine. Local regulations may restrict the age of the operator. When not in use store the machine out of reach of children.
- ▶ This tool is not intended for use by persons (including children) with reduced physical, sensory or mental capabilities, or lack of experience and knowledge, unless they have been given supervision or instruction concerning use of the appliance by a person responsible for their safety. Children should be supervised to ensure that they do not play with the appliance.
- ▶ The operator or user is responsible for accidents or hazards occurring to other people or their property.
- ▶ Other persons and animals should remain at a distance of 3 metres or more when the machine is being used. The operator is responsible for third persons in the working area.
- ▶ Never operate the machine while people, especially children or pets, are nearby.
- ▶ Use the machine only in daylight or good artificial light.
- ▶ Do not operate the machine when barefoot or wearing open sandals, always wear substantial footwear and long trousers.
- ▶ Failure to keep loose clothing from being drawn into air intake could result in personal injury.
- ▶ Do not operate without tubes in place.
- ▶ Failure to keep long hair away from the air inlet could result in personal injury.

- ▶ Always be sure of your footing on slopes.
- ▶ Keep all cooling air inlets clear of debris.
- ▶ Never blow debris in the direction of bystanders.
- ▶ **Do not modify this product.** Unauthorized modifications may impair the safety of your product and may result in increased noise and vibration.

Maintenance

- ▶ Keep all nuts, bolts and screws tight to be sure that the machine is in safe working condition.
- ▶ Examine the machine and replace worn or damaged parts for safety.
- ▶ Ensure replacement parts fitted are Bosch approved.

Recommendations for Optimal Handling of the Battery

- ▶ **Before any work on the garden product itself (e. g. maintenance, tool change, etc.) as well as during transport and storage, remove the battery from the garden product.** There is danger of injury when unintentionally actuating the On/Off switch.
- ▶ **Use only Bosch battery packs intended specifically for the machine.** Use of any other battery packs may create a risk of injury and fire.
- ▶ **Ensure the switch is in the off position before inserting battery pack.** Inserting the battery pack into machines that have the switch on invites accidents.
- ▶ **Do not open the battery.** Danger of short-circuiting.



Protect the battery against heat, e. g., against continuous intense sunlight, fire, water, and moisture. Danger of explosion.

- ▶ **When battery pack is not in use, keep it away from other metal objects like paper clips, coins, keys, nails, screws, or other small metal objects that can make a connection from one terminal to another.** Shorting the battery terminals together may cause burns or a fire.
- ▶ **Under abusive conditions, liquid may be ejected from the battery; avoid contact. If contact accidentally occurs, flush with water. If liquid contacts eyes, additionally seek medical help.** Liquid ejected from the battery may cause irritations or burns.
- ▶ **In case of damage and improper use of the battery, vapours may be emitted. Provide for fresh air and seek medical help in case of complaints.** The vapours can irritate the respiratory system.
- ▶ **Recharge only with the charger specified by the manufacturer.** A charger that is suitable for one type of battery pack may create a risk of fire when used with another battery pack.
- ▶ **When the battery is defective, liquid can escape and come into contact with adjacent components. Check any parts concerned.** Clean such parts or replace them, if required.
- ▶ **Use the battery only in conjunction with your Bosch product.** This measure alone protects the battery against dangerous overload.
- ▶ **Use only original Bosch batteries with the voltage listed on the nameplate of your product.** When using other batteries, e. g. imitations, reconditioned batteries or other brands, there is danger of injury as well as property damage through exploding batteries.
- ▶ Protect the battery against moisture and water.
- ▶ Store the battery only within a temperature range between 0 °C and 50 °C. As an example, do not leave the battery in the car in summer.
- ▶ Occasionally clean the venting slots of the battery using a soft, clean and dry brush.

Safety Warnings for battery chargers



Keep the battery charger away from rain or moisture. Penetration of water in the battery charger increases the risk of an electric shock.

- ▶ **Only charge Bosch lithium ion batteries or batteries installed in Bosch products with the voltages listed in the technical data.** Otherwise there is danger of fire and explosion.
- ▶ **Keep the battery charger clean.** Contamination can lead to danger of an electric shock.

- ▶ **Before each use, check the battery charger, cable and plug. If damage is detected, do not use the battery charger. Never open the battery charger yourself. Have repairs performed only by a qualified technician and only using original spare parts.** Damaged battery chargers, cables and plugs increase the risk of an electric shock.
- ▶ **Do not operate the battery charger on easily inflammable surfaces (e. g., paper, textiles, etc.) or surroundings.** The heating of the battery charger during the charging process can pose a fire hazard.
- ▶ **Supervise children.** This will ensure that children do not play with the charger.
- ▶ **Children or persons that owing to their physical, sensory or mental limitations or to their lack of experience or knowledge, are not capable of securely operating the charger, may only use this charger under supervision or after having been instructed by a responsible person.** Otherwise, there is danger of operating errors and injuries.





Products sold in **GB only:** Your product is fitted with a BS 1363/A approved electric plug with internal fuse (ASTA approved to BS 1362).

If the plug is not suitable for your socket outlets, it should be cut off and an appropriate plug fitted in its place by an authorised customer service agent. The replacement plug should have the same fuse rating as the original plug.

The severed plug must be disposed of to avoid a possible shock hazard and should never be inserted into a mains socket elsewhere.

Symbols

The following symbols are important for reading and understanding the operating instructions. Please take note of the symbols and their meaning. The correct interpretation of the symbols will help you to use the garden product in a better and safer manner.

Symbol	Meaning
	Reaction direction
	Movement direction
	Switching On
	Switching Off

Intended Use

The product is intended for blowing leaves, garden waste such as grass, twigs and pine needles.

Technical Data

Cordless leaf blower		ALB 18 LI	
Article number		3 600 HAO 3..	
Air speed, max.	km/h	210	
Weight according to EPTA-Procedure 01/2003	kg	1.8	
Serial number	see type plate on the garden product		
Battery		Li-Ion	
Article number			
- 1.3 Ah		2 607 336 039	
- 1.5 Ah		2 607 336 207	
Rated voltage	V=	18	
Capacity			
- 2 607 336 039	Ah	1.3	
- 2 607 336 207	Ah	1.5	
Number of battery cells			
- 2 607 336 039		5	
- 2 607 336 207		5	
Run time per battery charge*	min	10	
*for 1.5 Ah battery			
Please observe the article number on the type plate of your garden product. The trade names of the individual garden products may vary.			

Cordless leaf blower		ALB 18 LI	
Battery Charger		AL 2215 CV	
Article number		EU	2 607 225 471
		UK	2 607 225 473
		AU	2 607 225 475
Charging current	mA	1500	
Allowable charging temperature range	°C	0–45	
Charging period (battery discharged)*	min	63	
Weight according to EPTA-Procedure 01/2003	kg	0.4	
Protection class		□ / II	
Battery Charger		AL 2204 CV	
Article number		EU	2 607 225 273
		UK	2 607 225 275
		AU	2 607 225 277
Charging current	mA	430	
Allowable charging temperature range	°C	0–45	
Charging period (battery discharged)*	min	207	
Weight according to EPTA-Procedure 01/2003	kg	0.7	
Protection class		□ / II	

*for 1.5 Ah battery

Please observe the article number on the type plate of your garden product. The trade names of the individual garden products may vary.

Noise/Vibration Information

Measured sound values determined according to EN 60335.

Typically the A-weighted noise levels of the product are: Sound pressure level 60 dB(A); sound power level 80 dB(A). Uncertainty K=3 dB.

Vibration total values a_h (triax vector sum) and uncertainty K determined according to EN 60335: $a_h < 2.5 \text{ m/s}^2$, $K=1.5 \text{ m/s}^2$.

Declaration of Conformity

We declare under our sole responsibility that the product described under "Technical Data" is in conformity with the following standards or standardization documents: EN 60335 (battery powered product) and EN 60335 (battery charger) according to the provisions of the directives 2006/95/EC, 2004/108/EC, 2006/42/EC, 2000/14/EC.

2000/14/EC: Guaranteed sound power level 83 dB(A). Conformity assessment procedure according to Annex V.


Equipment category: 34

Technical file at:

Bosch Lawn and Garden Ltd., PT-LG/EAE, Stowmarket, Suffolk IP14 1EY, England

Dr. Egbert Schneider
Senior Vice President
Engineering

Dr. Eckerhard Strötgen
Head of Product
Certification

Robert Bosch GmbH, Power Tools Division
D-70745 Leinfelden-Echterdingen
25.03.2011

Mounting and Operation

Action	Figure
Delivery Scope	1
Tube Assembly	2
Battery Charging	3
Inserting the Battery	3
Starting	4
Stopping	4
Working Advice	5
Maintenance and Cleaning	6
Storage and Transport	6

Starting

For Your Safety

- ▶ **Before any work on the garden product itself (e. g. maintenance, tool change, etc.) as well as during transport and storage, remove the battery from the garden product.** There is danger of injury when unintentionally actuating the On/Off switch.
- ▶ **The machine continues to blow for few seconds after being switched off. Allow the motor to stop rotating before switching "on" again. Do not rapidly switch off and on.**

Battery Charging

- ▶ **Do not use other battery chargers.** The supplied battery charger is designed for the Lithium-Ion battery in your garden product.
- ▶ **Observe the mains voltage!** The voltage of the power supply must correspond with the data given on the nameplate of the battery charger. Battery chargers marked with 230 V can also be operated with 220 V.

Note: The battery is supplied partially charged. To ensure full capacity of the battery, completely charge the battery in the battery charger before using your garden product for the first time.

The lithium-ion battery can be charged at any time without reducing its service life. Interrupting the charging procedure does not damage the battery.

Charging Procedure

The charging procedure starts as soon as the mains plug is plugged into the socket and the battery is then inserted into the battery charger.

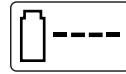
Firstly, place the battery as shown in the figure onto the front of the battery charger (1) and then press the battery down at the rear (2). To remove the battery, proceed in reverse order.

Due to the intelligent charging method, the charging condition of the battery is automatically detected and the battery is charged with the optimum charging current, depending on battery temperature and voltage.

This gives longer life to the battery and always leaves it fully charged when kept in the charger for storage.

Note: The charging procedure is only possible when the battery temperature is within the allowable charging temperature range, see section "Technical Data".

Flashing Battery Charge Indicator



The charging procedure is signalled by a **flashing** battery charge indicator.

Continuous Lighting of the Battery Charge Indicator



Continuous lighting of the battery charge indicator indicates that the battery is fully charged **or** that the temperature of the battery is not within the allowable

charging temperature range, and cannot be charged for this reason. The battery is charged as soon as the allowable charging temperature range is reached.

When the battery is not inserted, **continuous lighting** of the battery charge indicator indicates that the mains plug is inserted in the socket and that the battery charger is ready for operation.

Charging Advice

With continuous or several repetitive charging cycles without interruption, the charger can warm up. This is not meaningful and does not indicate a technical defect of the battery charger.

A significantly reduced working period after charging indicates that the battery is used and must be replaced.

The battery is equipped with a NTC temperature control which allows charging only within a temperature range of between 0 °C and 45 °C. A long battery service life is achieved in this manner.

The "Electronic Cell Protection (ECP)" protects the lithium ion battery against deep discharging. When the battery is run down or discharged, the garden product is shut off by means of a protective circuit: The garden product no longer operates.

WARNING

Do not continue to press the On/Off switch after the garden product has been automatically

switched off. The battery can be damaged.

Working Advice

When operating, always hold the machine approximately 3 cm above the ground.

Do not blow hot, flammable or explosive material.

Troubleshooting



Problem	Possible Cause	Corrective Action
Garden product fails to operate	Battery discharged	Recharge battery; also see "Battery Charging"
	Battery too hot/cold	Allow to cool/warm
	Garden product defective	Contact Service Agent
	Internal wiring of garden product damaged	Contact Service Agent
Garden product functions intermittently	On/Off switch defective	Contact Service Agent
Excessive vibrations/noise	Garden product defective	Contact Service Agent
Run time per battery charge too low	Battery has not been used for long period or only for short terms	Fully charge battery; also see "battery charging"
	Battery dead or defective	Replace the battery
	Air inlet/outlet blocked	Clear the air inlet/outlet
Machine does not blow	Tube obstructed	Clear tube
Tube cannot be mounted on the machine	Incorrect assembly	see "assembly"
Continuous lighting of the battery charge indicator	Battery not (properly) inserted	Properly insert battery into battery charger
	Battery contacts contaminated	Clean the battery contacts (e.g. by inserting and removing the battery several times) or replace the battery
No charging procedure possible	Battery defective	Replace the battery
Battery charge indicator does not light up	Mains plug of battery charger not plugged in (properly)	Insert mains plug (fully) into the socket outlet
	Socket outlet, mains cable or battery charger defective	Check the mains voltage; have the battery charger checked by an authorised after-sales service agent for Bosch power tools

Maintenance and Service

- ▶ **Before any work on the garden product itself (e. g. maintenance, tool change, etc.) as well as during transport and storage, remove the battery from the garden product.** There is danger of injury when unintentionally actuating the On/Off switch.

Maintenance, Cleaning and Storage

- ▶ **For safe and proper working, always keep the garden product clean.**

For safe and proper working, always keep the garden product and the ventilation slots clean.

Never spray with or immerse the garden product in water.

Store the garden product in a secure, dry place, out of the reach of children.

Do not place other objects on the garden product.

Battery Maintenance

Use the following procedures to enable optimum usage of the battery:

- Protect the battery against moisture and water.
- Store the battery only within a temperature range between 0 °C and 50 °C. As an example, do not leave the battery in the car in summer.
- Do not leave the battery in the product in direct sunlight.
- The ideal storage condition for the battery is 5 °C.
- Occasionally clean the venting slots of the battery using a soft, clean and dry brush.

A significantly reduced working period after charging indicates that the battery is used and must be replaced.

After-sales Service and Customer Assistance

www.bosch-garden.com

In all correspondence and spare parts orders, please always include the 10-digit article number given on the type plate of the garden product.

Great Britain

Robert Bosch Ltd. (B.S.C.)
P.O. Box 98
Broadwater Park
North Orbital Road
Denham
Uxbridge
UB 9 5HJ
Tel. Service: +44 (0844) 736 0109
Fax: +44 (0844) 736 0146
E-Mail: boschservicecentre@bosch.com

Ireland

Origo Ltd.
Unit 23 Magna Drive
Magna Business Park
City West
Dublin 24
Tel. Service: +353 (01) 4 66 67 00
Fax: +353 (01) 4 66 68 88

Australia, New Zealand and Pacific Islands

Robert Bosch Australia Pty. Ltd.
Power Tools
Locked Bag 66
Clayton South VIC 3169
Customer Contact Center
Inside Australia:
Phone: +61 (01300) 307 044
Fax: +61 (01300) 307 045
Inside New Zealand:
Phone: +64 (0800) 543 353
Fax: +64 (0800) 428 570
Outside AU and NZ:
Phone: +61 (03) 9541 5555
www.bosch.com.au

Republic of South Africa

Customer service

Hotline: +27 (011) 6 51 96 00

Gauteng – BSC Service Centre

35 Roper Street, New Centre
Johannesburg
Tel.: +27 (011) 4 93 93 75
Fax: +27 (011) 4 93 01 26
E-Mail: bsctools@icon.co.za

KZN – BSC Service Centre

Unit E, Almar Centre
143 Crompton Street
Pinetown
Tel.: +27 (031) 7 01 21 20
Fax: +27 (031) 7 01 24 46
E-Mail: bsc.dur@za.bosch.com

Western Cape – BSC Service Centre

Democracy Way, Prosperity Park
Milnerton
Tel.: +27 (021) 5 51 25 77
Fax: +27 (021) 5 51 32 23
E-Mail: bsc@zsd.co.za

Bosch Headquarters

Midrand, Gauteng
Tel.: +27 (011) 6 51 96 00
Fax: +27 (011) 6 51 98 80
E-Mail: rbsa-hq.pts@za.bosch.com

Transport

The contained lithium-ion batteries are subject to the Dangerous Goods Legislation requirements. The user can transport the batteries by road without further requirements.

When being transported by third parties (e.g.: air transport or forwarding agency), special requirements on packaging and labelling must be observed. For preparation of the item being shipped, consulting an expert for hazardous material is required.

Dispatch batteries only when the housing is undamaged. Tape or mask off open contacts and pack up the battery in such a manner that it cannot move around in the packaging.

Please also observe possibly more detailed national regulations.

Disposal

The garden product, accessories and packaging should be sorted for environmental-friendly recycling.

Do not dispose of garden products, battery chargers and batteries/rechargeable batteries into household waste!

Only for EC countries:



According to the European law 2002/96/EC, electrical and electronic equipments that are no longer usable, and according to the European law 2006/66/EC, defective or used battery packs/batteries, must be collected separately and disposed of in an environmentally correct manner.

Batteries no longer suitable for use can be directly returned at:

Batteries no longer suitable for use can be directly returned at:

Great Britain

Robert Bosch Ltd. (B.S.C.)
P.O. Box 98
Broadwater Park
North Orbital Road
Denham
Uxbridge
UB 9 5HJ
Tel. Service: +44 (0844) 736 0109
Fax: +44 (0844) 736 0146
E-Mail: boschservicecentre@bosch.com

Battery packs/batteries:



Li-Ion:

Please observe the instructions in section "Transport".

Subject to change without notice.

Free Manuals Download Website

<http://myh66.com>

<http://usermanuals.us>

<http://www.somanuals.com>

<http://www.4manuals.cc>

<http://www.manual-lib.com>

<http://www.404manual.com>

<http://www.luxmanual.com>

<http://aubethermostatmanual.com>

Golf course search by state

<http://golfingnear.com>

Email search by domain

<http://emailbydomain.com>

Auto manuals search

<http://auto.somanuals.com>

TV manuals search

<http://tv.somanuals.com>